



Birchanger Village Magazine

June 2024

Issue 257



Birchanger Against More Night Flights!

HM Government Consultation on night flight restrictions at Heathrow, Gatwick and Stansted Airports from October 2025

This is a response from Birchanger Parish Council regarding the above HM Government consultation concerning night flight restrictions.

Birchanger village is a small village which was established as a post Saxon/Roman settlement of the 5th and 6th centuries. The village is situated 1.9 miles northeast of Bishops Stortford and 2 miles west of the runway of Stansted Airport. As a village so close to the runway, aircraft noise is a constant during the day and now more frequently during the night period between 11.00 pm and 6.00 am. The continued sleep disturbance endured by the residents of Birchanger is becoming intolerable. The issues that concern the residents are not only the noise of the aircraft once airborne but also the take-off power decibel level required on the ground to initiate the take-off run. At full power this noise can be up to 140 dB while running down the runway until the aircraft leaves the runway and become airborne. This noise during the night has a detrimental effect on the residents' ability to sleep. Everyone in Birchanger village is affected by this noise due to our location and this noise can be exacerbated by weather.

There is also a separate issue of aircraft using high powered reverse thrust to slow and stop to enable the aircraft to leave the runway at the first rapid exit taxiway (RET). This high-power action by crews is not required for the safety of the aircraft during a normal landing run, it is only a requirement of the airport air traffic controller to get the runway empty as quickly as possible to allow other aircraft to depart or arrive. If crews are instructed to leave the runway further down at the last RET or end of the runway there would be no need for reverse thrust. The noise generated by reverse thrust can be as high as the noise produced by aircraft taking off and should be banned during the night hours except in emergencies.

None of this noise is captured by the noise monitors situated outside the curtilage of the airfield and on the direct standard instrument departures and arrivals as per the Jeppesen plates. But this noise is sorely heard by the residents of the village. Removing restrictions on night flights will be severely detrimental to the residents' rights to a good night's sleep and their health and wellbeing which is a basic human right.

The Government recognises that aircraft noise at night has negative impacts upon local communities around airports and can impact on physical and mental well-being. These negative impacts are far greater than any economic benefits and should be high on the consideration table when considering the relaxation of night flights at Stansted Airport. We note from the consultation document that there are three options which are being considered by the government.

Option 1 – Removal of all Government night controls in October 2026, thereafter relying solely on local planning conditions.

Option 2 – Same as Option 1, but removing Government night controls in October 2025, whilst maintaining a QC limit, but not a numerical limit.

Option 3 – Government night controls to remain (i.e. as per Heathrow and Gatwick).

Options 1 and 2 reflect lobbying activity by MAG for Stansted Airport as it is in their interests to do so, and both of these options would mean fewer restrictions and, inevitably, more Stansted night flights, further impacting on the local residents of Birchanger.

To our mind Option 3 is clearly preferable to options 1 and 2 if there has to be a choice but we would prefer that the government phase out night flights altogether – Stansted is currently allowed 13,700 night flights a year between the hours of 11.30pm and 6.00am. By comparison, Heathrow, which is three times bigger than Stansted, is allowed just 5,800 night flights a year. Night flights are particularly intrusive in a largely rural area, with low background night noise levels. The aim should be to phase out all Stansted night flights, except emergencies, by 2030.

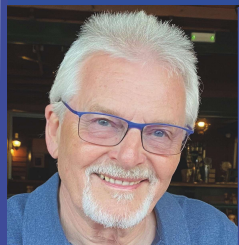
Night' should mean 'night' – The limit on the number of night flights should apply for the full 8-hour night period from 11.00pm to 7.00am, as defined by the World Health Organisation, and not just for the 6½ hours (11.30pm to 6.00am) – when the limit on the number of night flights currently applies.

Dispense with Dispensations – Airport management can grant 'dispensations' where flights are delayed by weather or Air Traffic Control problems. Dispensations do not count against the night flights limit. Stansted granted 1,200 dispensations last summer whereas Heathrow granted only 462. The DfT should remove the right of airports to grant dispensations.

Ban Reverse Thrust – The use of reverse thrust at night should be banned except in the case of an emergency. The Stansted runway is one of the longest in the UK and so the additional braking effect provided by using reverse thrust upon landing is quite unnecessary, other than in exceptional circumstances.

The current position at Stansted is that there is a limit on the number of night flights, which is easy to understand and monitor, and also a quota count (QC) limit. The QC system allocates points to each aircraft type, ranging from 2 QC points for the noisiest aircraft using Stansted at night, such as the Fedex MD11, to 0.25 points or even 0.125 points for less noisy aircraft such as those used by Ryanair and easyJet. For example, an allowance of 150 QC points

Continued on page 4



Editors Letter Box

Dear Readers,

Speeding Idiot!

On Monday 13th May, Birchanger Community Speed Watch (CSW) were on duty, both in the morning and afternoon at the corner of High View on Birchanger Lane. In the morning session, most cars drove the school run at a sedate 20-25 mph, except for one idiot driving a large grey Range Rover. At around 08:45 the said vehicle travelling from Stansted towards the A120 and M11 saw the speed watch team and immediately and deliberately put their foot down and passed them "like a bat out of hell". The speed was recorded at 43 mph, engine racing, and still accelerating around the bend. What a childish and stupid idiot! But it gets worse. Ten minutes later, not satisfied with the first run, the same vehicle returned, this time reaching a speed of 40 mph travelling towards Stansted Road before braking harshly to avoid the parked cars just past High View.



The driver must have thought this was a fun idea but disregarded the fact that children and parents were walking to school. He also ignored the three driveways on the bend that he shot past where house owners would have no clear view of cars approaching them from the lane when exiting their drives. He deliberately drove dangerously at high speed through our village with no thought or consideration to pedestrians or other road users and without any care or attention. If he reads this article, I hope he feels ashamed of himself and that he gives some thought to his stupidity and reckless action.

Needless to say, the CSW team took down his details including his registration number and reported him to Essex Police using their normal procedures. Shortly after the event and due to an earlier arrangement, the team were joined by two police officers who supported them for the rest of the session. The team explained what had happened 10 minutes earlier and the officers took down the details of the vehicle and promised to follow up the incident by visiting the driver's address and the school in case the driver was dropping off children.

Electric Vehicle Charging Point Grant

An 'EV chargepoint' grant can help towards the cost of installing an electric vehicle charging point socket at your property. You can get 75% off the cost to buy and install a socket, up to a maximum of £350. You can apply for this grant if you:

- Own or rent a residential property in which you live
- Have adequate on-street parking
- Have permission to install a cross-pavement charging solution between your home and the approved parking space
- Will install a cross-pavement charging solution before having your chargepoint installed
- Own an eligible vehicle

To find out more about the grant and to apply, go to:

<https://find-government-grants.service.gov.uk/grants/electric-vehicle-chargepoint-grant-for-households-with-on-street-parking-1>

Don't forget, your magazine is only as good as the content it receives, so please keep sending me your news, views, notices, concerns and complaints. Advertisers are also welcome. All copy should be submitted by the 16th of the month, preferably sooner and may be edited depending on space and content. Please contact me by E-mail, phone, or letter as shown below. Thank you and Kind Regards,

Join us on Facebook: www.facebook.com/birchanger/

Peter Sampson



magazine@birchanger.com



07817 904333



2 Harrisons, Birchanger

VILLAGE NEWS

By Elizabeth Godwin

After the Roadworks - What's Next for Birchanger?

The road works which have plagued Birchanger for the past two years may be coming slowly to an end but what of the future? Will the drivers who made our lives so miserable by rat running through Birchanger Lane realise that the 'shortcut' probably only reduced their journey time by just a few minutes? Will they continue to use the rat run in future? And what more horrors await?



One thing that is becoming increasingly apparent is that we may yet have another fight over the MAG Group's proposals for more night flights in and out of Stansted Airport, something which has been threatened on and off for a while.

Can they really do this? Well, it is unbelievable, but it seems they can and they will, caring absolutely nothing for the communities close to the airport who are frequently disturbed now by extremely loud take-offs, particularly between 10.30 and 11.30 at night. To expect anyone to endure that noise all night is unbelievable. It will affect the health of everyone living near the airport and it is a scheme which needs everyone's support to ensure that it does not happen.

Something of an Annual Battle

We are used to this one. Housing development on agricultural land. If the farmland surrounding Birchanger fails to sell as farmland what next? Pressure to build more houses? Birchanger is close to the county boundaries where boundaries are supposed to be respected and not encroached, but we know only too well that nothing is safe. The so-called upgrading of the roads around Birchanger has made Birchanger no more than an irritating little row of houses. But it is also where traditionally people have fought injustice and have made their voices heard. Birchanger is used to losing parcels of land which once belonged to the village to the airport, or to housing estates, but if Birchanger is to survive we must reject further development at every stage. Over the next few years Birchanger must continue to fight to establish itself firmly within its own entity. Birchanger must survive as a village community and not be afraid to make it crystal clear what its needs are and use them as building blocks for a strong future. Remember, the senior councils know that Birchanger can and has stood up for its rights and Birchanger must never forget this.

Birchanger All Girls Society

The 'BAGS' welcome women to join them on the last Wednesday of every month at 8.00 pm in the village hall.

Next meeting:

Wednesday 26th June 7.45 for 8.00 pm
Pimms, Strawberries & Cream in a member's garden

bags@birchanger.com

Olivia: 07568 574703 Rosemary: 01279 814678
Liz Turner: 07473 508056

Using DNA to Catch Thieves

Police have been handing out DNA-infused marking kits to farmers and residents in high crime areas in order to prevent theft and to catch thieves. By pre-marking equipment and valuable items with a specific DNA, stolen items will be easier to identify and return to their owners. Convictions of criminals should also increase as the burden of proof will be much easier. DNA marking not only helps recover stolen property but also acts as a strong deterrent against theft.

When Did You Last Replace Your Smoke Alarms?

The best protection against fire in your house is a smoke alarm. They sit there year after year perhaps needing the odd battery replacement but mostly, we just forget about them, until we burn something on the hob and then they do actually remind us that they are there. Their problem is that they do grow old like the rest of us and do need to be retired after ten years' service. Most of us probably do not know when we even bought them. Ten years is a fairly long time. To be efficient we ought to have a book of purchases but most of us like me, do not. Something to add to the guarantee box file perhaps. Most of us need to have a fire alarm to satisfy our house insurers and if there was a damaging fire with an ancient alarm or without an alarm altogether, the company might just not pay up.

Why Are People So Cruel to Animals?

Police are trying hard to crack down on the amount of cruelty to animals which has become an increasing trend in Essex. Birds and animals are being shot at indiscriminately all over Essex and doubtless other counties as well, with weapons such as catapults, air rifles and crossbows. In many cases the victim is injured and dies a long slow painful death. Should you see this crime or evidence of it, report it on 111 or if it is a crime in progress use 999. The perpetrators see this crime as harmless fun, but when has a long slow painful death ever been harmless or fun? People need educating but it should be common sense.

Is Joining the Police Becoming More Popular?

It could be, as 42 men and 37 women finished their basic training and joined Essex Police last month. Policing is varied and after basic training and a probationary period there are many options to choose from. Something perhaps for school or university leavers to consider?

Booking Your Slot at an Essex Tip

Booking a slot for both traders and householders is still by appointment only. This move has been popular among 72% of traders but only 58% of householders polled said it was a good idea. Well, whatever your opinion for now at least, booking your slot remains.

Essex Leads the Way in the Battle Against Climate Change

Essex has performed the highest in climate change mitigation and has achieved an 'A' rating. Quite a surprise in a county close to London, airports, and ports within its boundaries. To achieve the best score Essex had to have an area wide emissions inventory and to have published its climate change action plan.

Help With Energy Saving Improvements

Did your house feel cold this winter? Are you reeling from this winter's fuel bills? Now might be the time to look into better home insulation with the aid of a government grant. There is a new grant around called HUG or Home Upgrade Phase 2. This scheme will provide energy efficiency and low carbon heating if you agree to stop using gas or perhaps gas is not even connected to your house. Whether you use gas or not, but you are interested in a no gas heating scheme call the Energy Saving Trust on 0808 196 8255.

How Safe Do You Feel Going Out at Night?

It is lovely and light until quite late at present, but think back to the cold, dark winter evenings when you would have to go out and would far rather not be out at all. Are there any places where you feel unsafe? Apparently at least 47% of us do feel unsafe somewhere near to where they live. Now there is a map where you can view other people's no-go areas and add your own, even if it has been selected before. The map can be accessed on 'Have Your Say Today' powered by 'Commonplace'. It is interactive so you can vote up already highlighted areas where others have felt the same as you. <https://essexcommsafety.commonplace.is/en-GB> Highlighted areas inform police where they should be concentrating. Even Birchanger has its dark places and most of us know where they are.



Helping Your Transport Needs

Did you know that you can book a ride via an app known as 'Travel Essex'. The app is sponsored by Essex County Council which aims to try to get people to where they want to go. To find out more about this and to see if this app could help solve your transport problems call 01245 203 952 Monday to Friday between 10:00 am and 12:00 Alternatively you can simply download the app to your smart phone.

Night Flights Consultation - Continued From Page 1

per week would allow 75 night flights by the noisiest aircraft or up to 1,200 night flights by less noisy aircraft. Removing the current QC limit and staying with a standard numerical limit would be preferable to allowing the QC system to survive.

The more aircraft departing and arriving regardless of their noise profile during the nighttime period means more noise disturbance to the residents of Birchanger and will have a continued detrimental effect on the wellbeing of the residents. In conclusion Birchanger Parish Council fully opposes any relaxation of night flight limits and urges the government to act to overhaul the current system to restrict night flying in general from Stansted Airport.

Keith Williams - Parish Clerk - Birchanger Parish Council

ENVIRO ELECTRICAL SERVICES

enviroelectricalservices@gmail.com

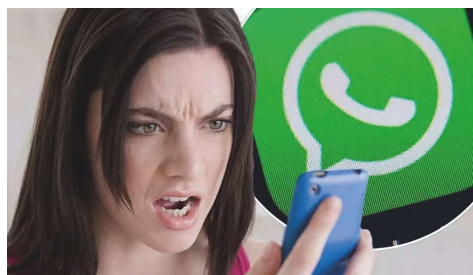


DANIEL ROSS
07703484090

City & Guilds Qualified
Part P Registered
DBS Checked

Friendly, Professional electrician with over 20 years experience based in Bishop's Stortford, offering all domestic electrical solutions in Herts & Essex

WhatsApp Group Scam



WhatsApp group chat members are being warned they could be targeted by criminals, as Action Fraud reveals it has received 636 reports from victims of the

messaging app this year. The fraud often begins when a member of the group receives a WhatsApp audio call from the fraudster, pretending or claiming to be another member of the group. This is done to gain the individual's trust, and often the scammer will use a false profile picture and/or display name, so at first glance it would appear to be a genuine member of the group.

The fraudster will tell the victim they are sending them a one-time passcode which will allow them to join an upcoming video call for group members. The criminal then asks the victim to share this passcode with them so they can be "registered" for the video call.

In reality, the criminal is asking for a registration code to register the victim's WhatsApp account to a new device so they can take over their account. Once the fraudster has access to the victim's WhatsApp account, they will enable two-step verification which makes it impossible for the victim to regain access their account. Other members of the group, or friends and family in the victim's contacts, will then be messaged asking them to transfer money urgently as they are in desperate need of help. How to secure your WhatsApp account:

- Set up two-step verification (2SV) to give an extra layer of protection to your account. Tap Settings > Account > Two-step verification > Enable
- CALL. If a family member or friend makes an unusual request on WhatsApp, always call the person outside of WhatsApp to confirm their identity.
- Report spam messages or block a sender within WhatsApp. Press and hold on the message bubble, select 'Report' and then follow the instructions.

If you live in England, Wales and Northern Ireland and have been a victim of fraud or cybercrime, report it at www.actionfraud.police.uk or by calling 0300 123 2040. In Scotland, victims of fraud and cybercrime should report to Police Scotland on 101.

Find out how to protect yourself from fraud. Go to:
<https://stopthinkfraud.campaign.gov.uk>



Taylor Landscapes
Landscapes For Living

07941 357934

mark.taylor@taylorsvcs.net

[f](https://www.facebook.com/TaylorLandscapesLtd) [i](https://www.instagram.com/TaylorLandscapesLtd)
@TaylorLandscapesLtd

We've had a wonderful start to our Summer Term and have lots of exciting events coming up over the next few weeks. For our Summer display the children have created a beautiful rainbow which is brightening up the room. We have started preparing our older children for their transition to Primary school this September and they are really enjoying playing dress-up with the school uniforms.



The children were very excited at the arrival of our Caterpillars and are eagerly watching and waiting for them to turn into Butterflies. We have planted seeds in our greenhouse planter and the children are taking great care of them to help them grow, once they are ready, they will be transferring them to our allotment in the nature garden.



Our Quiz Night Fundraiser will be held in the Village Hall on Saturday 13th July. All are welcome so please email us if you would like to purchase tickets.

We still have limited spaces available from September 2024 and are already taking bookings for September 2025 so please get in touch if you would like to arrange a visit.

Encounters of the Third Kind

Boldly venturing on a European holiday alone, Stansted member Susan Sedgebeer was pleased to happen upon a fellow u3a member from Bishop Auckland. The happy coincidence, miles from the UK, led to an interesting arrangement. Fast forward to Sunday 7th April when eight Stansted members drove to Cambridge to meet up with a large party from Bishop Auckland u3a! They joined together for a guided tour of the city given by the knowledgeable Tony Rodgers MA BSc. All 'Thirdagers' had a super time and recommend being a tourist in your own city!

The Garden Group recently looked into the History of the Cottage Garden with the help of Andrew Sankey, gardener, author, and lecturer. Forget any chocolate box notions with hollyhocks at the gate. The original Cottage Gardens were a key source of food for their inhabitants (as well as the site of their al fresco restrooms). Any hollyhocks were self-seeded, not deliberately planted.

The itchy feet of the Bus Pass Group took them to the Botanical Gardens in Cambridge for their recent outing. The beautiful array of lilacs, orange blossom and magnolias did not disappoint the travellers. Inside the hothouses, where they took refuge from the cold winds, they found the exotic Jade Vine. This plant is usually pollinated by bats. With no bats available, the Botanical Gardeners have had to do this by hand to ensure a crop of juicy fruits later in the year.

Sadly, the group arrived in Cambridge by means of the train, having taken the decision that the buses were less than reliable. Let us hope this does not become a permanent situation.

Finally, do please remember that new members are always very welcome. Please check out the website: u3asites.org.uk/stansted or phone 07874385541 to find out more information about the variety of activities on offer.

Julia Cook

BIRCHANGER BUTTERFLIES PRE-SCHOOL PRESENTS

QUIZ NIGHT

13TH JULY 2024

TICKETS £5 PER PERSON

TABLES UP TO 8

BRING YOUR OWN DRINKS AND NIBBLES

BIRCHANGER VILLAGE HALL
7.30PM START

FOR TICKETS AND MORE INFORMATION CONTACT THE PRE-SCHOOL OFFICE ADMIN@BIRCHANGERBUTTERFLIES.ORG.UK

What's on in the village...



June 2024



Household Bin Collections: Bradley Common collected on Fridays. Rest of Birchanger on Thursdays. (Some exceptions)

Garden Waste Skip Outside the Club 15.00-16.00: 8 Jun, 6 Jul, 3 Aug, 31 Aug, 28 Sept, 26 Oct, 23 Nov.

Mon

Tue

Wed

Thu

Fri

Sat

Sun

Birchanger Parish Council Meetings: Meets on the first Tuesday of each month at 7.30 pm in the church hall - **Open to the public.**

					1 Church Hall: 09.00 - 12.00 Apton Dance for kids BSSC: 13.00 Meat Draw 21.00 Afterlife	2 St Mary's Church: 11.15 am Family Service BSSC: Sunday Roast
3 Church Hall: 09.30-12.00 Baby Massage 16.00-18.45 Ellouise Dance 19.00 - 20.00 Apton Dance Latin/Ballroom	4 Church hall: 09.45-10.45 Ballet 18.00 - 21.00 Apton Dance	5 Church hall: 10.00 Tai Chi 13.00 Takeley Art 14.00 Tea Room 16.15-17.15 Ellouise Dance 18.30-21.15 Apton Dance	6 Green Bin Church hall: 12.00 Line dance 16.45-20.30 Ellouise Dance BSSC: 20.00 Bingo	7 Church Hall: 09.30 - 10.30 Apton Dance 11.00 Pilates 15.30 Ellouise Dance	8 Church Hall: 09.00 - 12.00 Apton Dance for kids BSSC: 13.00 Meat draw 20.00 Elle & the Pocket Belles	9 St Mary's Church: 11.15 Holy Communion BSSC: Sunday Roast
10 Church Hall: 09.30-12.00 Baby Massage 16.00-18.45 Ellouise Dance 19.00 - 20.00 Apton Dance Latin/Ballroom	11 Garden Bin Church hall: 09.45-10.45 Ballet 18.00 - 21.00 Apton Dance	12 Church hall: 10.00 Tai Chi 13.00 Takeley Art 14.00 Tea Room 16.15-17.15 Ellouise Dance 18.30-21.15 Apton Dance	13 Black Bin Church hall: 12.00 Line dance 16.45-20.30 Ellouise Dance BSSC: 20.00 Bingo	14 Church Hall: 09.30 - 10.30 Apton Dance 11.00 Pilates 15.30 Ellouise Dance	15 Church Hall: 09.00 - 12.00 Apton Dance for kids BSSC: 13.00 Meat draw 21.00 The Trax	16 St Mary's Church: 11.15 Matins Service BSSC: Sunday Roast
17 Church Hall: 09.30-12.00 Baby Massage 16.00-18.45 Ellouise Dance 19.00 - 20.00 Apton Dance Latin/Ballroom	18 Church hall: 09.45-10.45 Ballet 18.00 - 21.00 Apton Dance	19 Church hall: 10.00 Tai Chi 13.00 Takeley Art 14.00 Tea Room 16.15-17.15 Ellouise Dance 18.30-21.15 Apton Dance	20 Green Bin Church hall: 12.00 Line dance 16.45-20.30 Ellouise Dance BSSC: 20.00 Bingo	21 Church Hall: 09.30 - 10.30 Apton Dance 11.00 Pilates 15.30 Ellouise Dance	22 Church Hall: 09.00 - 12.00 Apton Dance for kids BSSC: 13.00 Meat draw	23 St Mary's Church: 11.15 am Holy Communion BSSC: Sunday Roast
24 Church Hall: 09.30-12.00 Baby Massage 16.00-18.45 Ellouise Dance 19.00 - 20.00 Apton Dance	25 Garden Bin Church hall: 09.45-10.45 Ballet 18.00 - 21.00 Apton Dance	26 Church hall: 10.00 Tai Chi 13.00 Takeley Art 14.00 Tea Room 16.15-17.15 Ellouise Dance 18.30-21.15 Apton Dance	27 Black Bin Church hall: 12.00 Line dance 16.45-20.30 Ellouise Dance BSSC: 20.00 Bingo	28 Church Hall: 09.30 - 10.30 Apton Dance 11.00 Pilates 15.30 Ellouise Dance	29 Church Hall: 09.00 - 12.00 Apton Dance for kids BSSC: 13.00 Meat draw Quiz Night	30 St Mary's Church: 11.15 am Family Service BSSC: Sunday Roast



BIRCHANGER SPORTS
AND SOCIAL CLUB

WHAT'S ON AT THE CLUB

Elle & the Pocket Belles

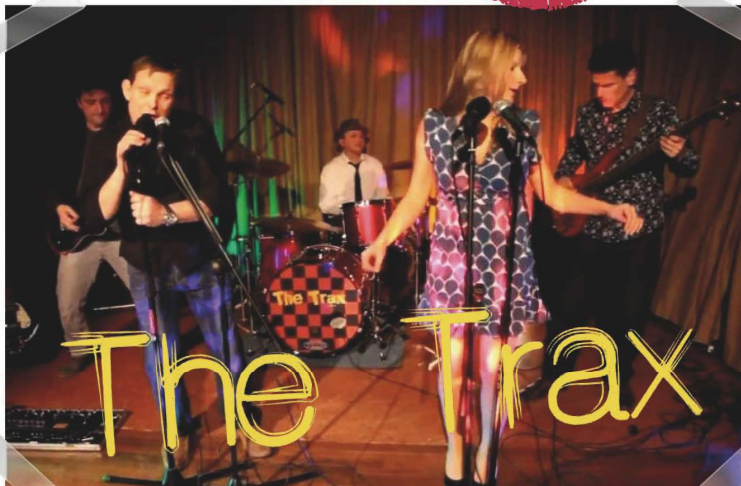


8th June - 8pm

QUIZ Night

29th JUNE

8PM START. FREE ENTRY. MUSIC,
PICTURE & WIPEOUT ROUNDS.
PRIZES TO BE WON.



SATURDAY 15th JUNE



NEW MEMBERS WELCOME

We welcome new members. To
join you can either complete the
online application or speak to a
member of staff at the Club.

For more information visit
www.birchangerclub.com



For all general enquiries
Telephone: 01279 813441 Email: club@birchanger.com
Website: www.birchangerclub.com

Follow us on Social Media
For all news and announcements





Volunteers - We need you!

Home-Start Essex is looking for volunteers to provide support to families who need a bit of extra help. Can you spare a few hours a week? Would you like to help your local community?



We are looking for volunteers within the Uttlesford area to join our team. If you are looking for a volunteering opportunity and would like to make a difference to the lives of children and families, then please get in touch. You do not need to be a parent to volunteer, any experience of working or volunteering with children is welcome also.

Our volunteers know how tough parenting can be and they don't want anyone to go through it alone. As a professionally trained volunteer you will make a lasting difference to families who need a helping hand. The benefit to children is long term: reducing the risk of problems escalating in the future to ensure they have a happy and secure family life.



Recent studies have highlighted the enormous benefits for people of volunteering. When you volunteer, your ties to

the community improve, so does your own support network and mental health. So, while you are generously helping others, you are also helping yourself. Volunteering allows you to support your community, make friends for life, and gain new skills and experience.

Volunteering will not only change families' lives, it will change yours!

For more information, please email info@home-startessex.org.uk, call 01245 847410 or visit our website: <https://home-startessex.org.uk/volunteer/>

Thank you

Armed Robbers Jailed After Targeting Stansted Service Station

Two armed criminals who used an imitation firearm and a knife to rob a service station have been jailed for a combined 11 years. Jack Knight, 44, and Grant Bolden, 39, were captured on CCTV entering the shop, in Cambridge Road, Stansted Mountfitchet, at 10.35pm on 27 September last year. Knight was seen to immediately point a handgun at the cashier as he advanced towards the counter. Accomplice Bolden brandished a knife as he leapt over the counter to demand money and cigarettes. The footage shows the pair leave the shop a short time later at 10.37pm. They took cigarettes worth more than £900 with them.

A CCTV appeal was issued via the police social media pages and Bolden was identified as one of the people pictured. Further work by officers, including analysis of the clothes the suspects were seen to wear, identified both Bolden and Knight as the perpetrators. Analysis of mobile phones attributed to the pair showed incriminating messages further revealing their involvement.

Officers executed two warrants at addresses linked to Bolden and Knight on 20 October, arresting both suspects. At Knight's address, officers recovered a black handgun – later established to be an air gun – matching the description of the weapon used in the offence. Clothing worn by Knight and Bolden while they committed the offence was also recovered.

They each admitted a charge of robbery at Chelmsford Crown Court. Knight, of Flitch Green, Dunmow, was jailed for four-and-a-half years when he appeared before a judge on 7 March. Appearing at the same court on Thursday 9 May, Bolden, of Hunters Way, Saffron Walden, was jailed for seven years.



TC TREE SURGERY
& GROUNDS MAINTENANCE

AVAILABLE FOR :

- CROWN REDUCTION/ THINNING - TREE REMOVAL - POLLARDING - FELLING - SITE CLEARANCE - FENCING - DECKING - TURFING - GRASS & HEDGE CUTTING - CONTRACT MAINTENANCE

CALL OR EMAIL FOR A FREE NO OBLIGATION QUOTE

TEL : 07834 785716 / 01279 850257
EMAIL : TCTREESURGERY@GMAIL.COM

WWW.TCTREESURGERY.CO.UK



A TRIBUTE TO AN UNSUNG HERO

Sadly, a former Birchanger resident, Dr Patricia Dale passed away last month in a nursing home in Stansted Mountfitchet at the ripe old age of 103. Pat was a longstanding expert adviser on Air Quality issues to Stop Stansted Expansion, now Stansted Airport Watch.

Pat made an immense contribution to SSE and, more broadly, to the cause of challenging unfettered UK airport expansion wherever it was threatened. She was an expert on the pollutants emitted by aircraft jet engines and harmful particulate matter arising from aircraft operations.

Pat had a string of qualifications. She was a Medical Doctor; a Member of the Faculty of Occupational Medicine and she held Diplomas in Public Health and International Health. She was formerly Medical Director, Harlow Occupational Health Service and Occupational Health Adviser to Kings College Hospital, London.

Pat provided expert evidence to the Stansted Public Inquiry in 2007 on the potential public health risks arising from aircraft emissions, her main concerns being:

- NO_x (nitrogen oxides) particularly, NO₂ (nitrogen dioxide), which are lung irritants.
- PM₁₀ and PM_{2.5} (fine and ultra-fine particles), known to be harmful to those with chest and heart conditions.
- Benzene and 1,3 - butadiene, which are both carcinogenic.

Needless to say, Stansted Airport was able to find highly paid consultants to challenge Pat's evidence. However, as the years have gone by, there is growing scientific evidence to support her analysis and conclusions. Similar health concerns about road transport emissions are the reason vehicles now have catalytic converters and why the controversial Ultra Low Emissions Zone (ULEZ) has been introduced in London.

Aside from the impacts of human health, Pat provided evidence to identify the risk of high NO_x levels from aircraft engine emissions, damaging vegetation, over the northwestern part of Hatfield Forest, which is a Site of Special Scientific Interest (SSSI), a National Nature Reserve (NNR) and one of the few surviving ancient hunting forests in the UK.

The National Trust put its full weight behind Pat Dale's evidence to the Public Inquiry but, again, Stansted Airport was able to find highly paid consultants to argue against her. Such are the disappointments in the life of a passionate campaigner, but Pat will always be remembered for having done her very best to take on powerful vested interests. If Stansted Airport Watch had a hall of fame, Dr Pat Dale would have a prominent place.

Brian Ross

THE FORGOTTEN GARDENS OF EASTON LODGE

After cold weather in April, the plants at the Gardens were back on a more normal footing at the beginning of May, so there was lots for visitors to enjoy through the month: bluebells, followed by cowparsley, foxgloves then wild orchids, as well as the alliums, rock roses (*Helianthemum*) and roses in the flower borders. Then there was the stunning pink hawthorn in the Glade, then the Indian Horse Chestnut's flower spires succeeding the British horse chestnuts.

There are lots of flowers to look forward to in June, including the water lilies in the Italian Garden, poppies everywhere and by the end of the month, the first flowers in the dahlia border. The Robinia pseudoacacia tree's beautiful delicate pink pea-shaped flowers are my June favourite.

The Trust's volunteers will be working hard to keep the Gardens tidy and to welcome visitors on Thursdays, with a steady flow of fresh produce for sale.



On the 23rd June, the monthly Sunday Open Day will be a lavish Tudor event – with visitors invited to meet Lord Burleigh, Queen Elizabeth I's Chancellor, and sponsor of Henry Maynard, who built Easton Lodge for his home in the 1590s. There will be Tudor activities for all the family, including archery, and Tudor music, played on shawms, trumpets, sackbuts, cornetts, lyards, bagpipes, recorders, gemshorns and fiddles. Fun and educational!

The Gardens are open from 11.00 am and our volunteers provide refreshments. Tickets can be bought in advance for Sundays. There is no charge for children under 16 years old. Visitors can bring picnics and dogs on leads are welcome. For more information about tickets, times, activities, and refreshments go to:

www.eastonlodge.co.uk/whats-on Jill Goldsmith



The Hundred Parishes Society

The Hundred Parishes includes much of the extensive barley-growing area of the Hertfordshire and Essex borders. The malting of barley in preparation for its use in the brewing industry was a significant activity in several of our larger villages and market towns, especially along the River Stort, from the 18th to the 20th centuries.



Manuden Old Maltings

Evidence is still to be found in the form of place names indicating the location of former maltings, such as Malting(s) Lane in Much Hadham and Chrishall; and in the names of buildings that were once maltings or associated with one nearby.

Thus, there are a number of Malting(s) Cottage(s), as in Linton, Bartlow, Much Hadham, Aspenden and Ugley; and Old Maltings as at Manuden, Arkesden and Great Chesterford. In Little Hallingbury there is Malting Farm and The Old Brick Malting.



Newport Station Maltings



Great Dunmow Maltings

As well as conversion to private houses, surviving maltings have been renovated and converted to a variety of uses. Great Dunmow's is now a museum and community resource. In Wethersfield, the maltings is now the village hall and shop, while the station maltings in Newport and those in Central Arcade in Saffron Walden are commercial premises. Multi-storey maltings in Sheering have been converted into apartments and in Stanstead Abbots to a business



Stanstead Abbots

centre. The classic form of a malting reflects the various processes which took place within the building. Grain was hauled in through the 'lucam' or hoist housing at one end of the building where it was then steeped in water to start the germination process. The grain was laid out on germination floors before growth was halted at a particular stage by applying heat in the kiln at the other end of the building. The process of initiating and then halting germination is known as malting.

Ken McDonald, Secretary

www.hundredparishes.org.uk



The Three Horseshoes

P. D. Tucker & P. Stapleton

Hazel End Road, Hazel End, Bps Stortford, Herts CM23 1HB

Tel: 01279 813429

Mon-Sat: 12noon - 3pm & 6 - 11pm Sunday: 12noon - 3pm

Village Services and Activities

Service	Contact	Telephone No.
Allotments	Council Clerk	01279 814773
Alzheimer	Marian	07803 115826
Art Studio & Gallery	Heather Brown	01279 815453
Ballroom Dance	Fred Winters	01763 271942
Ballet for kids	Philippa McMeechan	01763 271010
BAGS	Rosemary Wheatley	01279 814678
Beauty Therapist	Sarah Whiting	07887 638359
Beauty - HEH Nails	Hana Hainsby	07730 619522
Birchanger Magazine	Peter Sampson	07817 904333
Butterflies Preschool	Carly Richards	01279 810800
BSSC Club	Terry Earnshaw	01279 813441
Car Service, MOT, Gas	D. Bonney	01279 813315
Car Service - Mobile	B. K. Autos	07786 461813
Chiropodist	Julie Golden	01279 873492
Dance - Apton Studio	Maxine Williams	07854 251528
Dementia	Debbie Baker	07927 011345
Garden Services	GWB Horticulture	01799 543483
Garden Services	Will Grange	07516 783138
Hairdresser Men/Boys	Emma Marks	07527 227943
Handyman	Charlie Grange	07514 783239
Holistic therapy/Reflexology	Shelley Williams	07476 279262
Landscaping Services	Mark Taylor	07941 357934
Launderette	Ian Kennedy	01279 866183
Line Dancing	Shelley	01279 864781
Neighbourhood Watch	Peter Sampson	07817 904333
Painting & Décor	David Debnam	07973 861268
Parish Clerk	Keith Williams	01279 814473
Pilates	Mandy Cousins	07713 272664
Public Safety	Peter Sampson	07817 904333
Speed Watch	Peter Sampson	07817 904333
St. Mary's Church	Pam Lee	07702 171744
Tai Chi	Cait Goddard	07415 628935
The Three Horseshoes	Paul & Paula	01279 813429
The Three Willows	Mark Boden	01279 815913
Village Church Hall	Cat Roberson	07475 092658

St. Mary's Church



Church services - 11.15 am

2nd June	Family Service with Jo Pratt
9th June	Holy Communion with Revd Helen Flack
16th June	Matins with Hugh Mascetti
23rd June	Holy Communion with Revd Colin Fairweather
30th June	Family Service with Pam Lee

Church News

On Sunday 19th May (Whitsunday) Christians celebrated the birth of the church, the day when the Holy Spirit came down to the people and the word of God was spread far and wide. This day is also known as Pentecost.

As a child, I recall that there was great excitement in our house because all the family got a new outfit to wear that day. I know that this may not seem so important today but back then it was a rarity to get new clothes, mainly it was hand-me-downs. Not only that, but all our friends in the village got new clothes too.

On that day each year the whole village packed into coaches and went off to Cleethorpes for the day. Adults in one coach and children in another. We always looked forward to this day of celebration. All the local villages did the same, but it is a tradition that seems lost in the past.

It was a special time, but I am sure that I did not appreciate it at the time. Looking back, I can see that the coming of the Holy Spirit was like putting on a new outfit. A new way of living with God, putting on his armour and accepting all he has to offer.

Nowadays, people do not seem to know about the significance of Whitsun. They've forgotten about the Whit Monday holiday from work which eventually became our May Spring bank holiday. All they want is to have a day off work with no thought of why or what the day represented.

Many of our Christian festivals are viewed in this way but I invite you to stop and just for a moment contemplate the momentousness of that day long ago when our Church was born.

Upcoming Events

2nd July	10.30am Church Coffee Morning
18th August	Patronal Festival
29th September	5pm Harvest Evensong
Date to be advised	Strawberry Cream Tea

Pam Lee (Church Warden)

Tel: 07702 171744

pam.mark2@btinternet.com



Village Church Hall

Modern hall, superb kitchen and additional meeting room available for hire



Tearoom open every Wednesday from 2.00 pm

For bookings or further information please contact:

Manager: Cat Roberson

Telephone: 07475 092 658

Email: birchangerhall@gmail.com

Village Church Hall



For information and bookings contact:
Manager: Cat Roberson
Telephone: 07475 092658
Email: birchangerhall@gmail.com

THE THREE WILLOWS



Fine dining, takeaway & good beers. Children and dogs welcome. Bookings: 01279 815913
 Monday to Thursday: 12 to 3pm & 5 to 11pm
 Fri/Sat: 12 to 11pm Sunday: 12 to 7pm

B.K.AUTO'S

**Fully Qualified And Insured
 Mobile Mechanic**

Located within Birchanger,
 all makes and models serviced
 and repaired, including
 4x4 & commercials



**Contact: Ben
 07786461813**

D. Bonney & Sons



**Motor
 Engineers**

MOT Testing - Servicing - Diagnostic
 Mechanical Repairs
 Selection of New and Used Cars

Yew Tree Corner, Manuden
 Ring Malc or Niel on
 01279 813315 or 01279 815946

State Registered Chiropodist

Mrs. Julie Golden S.R.Ch.

Home Visiting Practice

Est 1994
 Tel: 01279 873492
 Mob: 07916075451
 Dunmow Road
 Takeley CM22 6SH

Painting & Decorating



Bring new life to
 your home
 Interior - Exterior
 General Maintenance
 No job too small

David

Debnam

Tel: 01279 815214 Mob: 07973861268



Grass & Hedge
 Cutting
 Fencing
 Turfing
 Patio & Driveway Cleaning
 Grounds Maintenance Contracts

Contact Will Grange - 07516783138



**WASH & IRON SERVICE
 CLOTHES - BEDDING - DUVETS**

Opening Times
 Mon - Fri 9.00 am - 6.00 pm
 Sat - Sun 9.00 am - 6.00 pm

Hockerill Lights, Bishop's Stortford
 Large car park at rear
Tel: 01279 866183



Aerial Satellite AV Security

- Aerial Installations
- Sky Installations & Subscriptions
- CCTV & Security Alarms
- Freesat Installations & Receivers
- Audio Visual Installations
- Multiroom Music & TV Distribution
- Wireless & Wired Networks
- TV Wall Mounting Services
- Family Run Business



01279 656 983 - 0800 587 2556

Unit 1, Suite 1 Peak Business Centre, Woodside Industrial Estate, Bishops Stortford CM23 5RG

Wireless Security Intruder alarms



Intruder alarms have never been so
 simple to install,
 operate, maintain and clean.

Mediacoms uses the latest
 technology to keep you & your
 property secure.

YOUR HOME AND COMMERCIAL SECURITY INSTALLER
 ALARMS CCTV DOOR ENTRY GATE AUTOMATION

www.mediacomms.co.uk

info@mediacomms.co.uk



Perfectly Pampered

Complementary & Holistic Therapies
 By Shelley Williams MGHT

07476 279262

Birchanger CM23 5QT

The natural approach to the wellbeing of
 women, focusing on relaxation, improving
 sleep, relieving stress, fatigue and anxiety
 through reflexology, facial and body massage
 therapies.

MGHT Accredited & Insured



**Friendly, Professional & Reliable
 Sustainable Garden Services Provider
 Gardening, Landscapes & Tree Works**

Tel: 01799 543483 Mob: 07866 752713

One off Garden Tidies	Regular Garden Maintenance
Hard & Soft Landscaping	Tree Pruning, Felling & Reductions
Hedge Cutting & Trimming	Fencing & Timber Structures
Advice & Planning	Traditional Countryside Crafts
Planting and Plant Sourcing	Leaf & Snow Clearance
Log Splitter & Operator Hire	Soil, Log & Aggregate Delivery
Chipper & Operator Hire	

Free No Obligation Quotes
www.gwbhorticulture.co.uk

The Birchanger Village Magazine is published on behalf of the people of Birchanger and distributed free to 450 households in Birchanger. The views expressed herein do not necessarily reflect those of the editor, the magazine or any organisations or institutions represented. Material sent to the editor will generally be printed as received providing it is considered suitable by the magazine team. The editor reserves the right to edit content if considered unsuitable or where insufficient space is available. All material should be submitted by the 16th of the month to be published the following month.

Printers: Keeley & Lowe Tel: 020 7729 3350 - Email: info@keeleylowe.com

Editor: Peter Sampson Tel: 0781 7904333 Email: magazine@birchanger.com

Chairman: Elizabeth Godwin.

Treasurer: Ken Wheatley.