



Birchanger Village Magazine

November 2023

Issue 250



New Local Plan A Good Result!



The first draft of the UDC Local Plan is now out. It plans for 6,076 new houses in Uttlesford between now and 2041, on top of the 5,800 currently committed.

The good news is that Birchanger is not in the frame for any new housing (nor does it account for any of the 5,800 committed). There would only be the possibility of a handful or so “windfall” houses, filling a few gaps here and there.

The new Plan makes provision for 5,076 additional homes at ten proposed strategic development sites (greater than 100 homes) located at the three Key Settlements (Saffron Walden, Great Dunmow and Stansted Mountfitchet) and three of the Local Rural Centres of Newport, Takeley and Thaxted.

The Plan also proposes to support 1,000 additional homes on non-strategic sites (less than 100 homes) at our thirteen Larger Villages, although the proposed level of additional housing at these settlements varies on a case-by-case basis ranging from NIL to 115 dwellings. There is an opportunity for neighbourhood plans to take responsibility for these allocations if they wish to.

This is an excellent outcome, although importantly, it's still only a draft plan and could be changed. UDC seems to have taken careful note of the importance local residents attach to the Green Belt around Birchanger!

Details of the plan can be found at:

<https://uttlesford.moderngov.co.uk/documents/g6263/Public%20reports%20pack%2004th-Oct-2023%2019.00%20Local%20Plan%20Leadership%20Group.pdf?T=10>

See especially Table 1 on Page 18 and Tables 2 and 3 on Page 23.

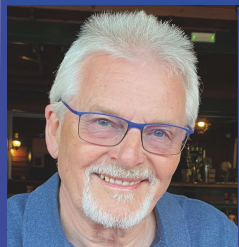
Danger of losing our bus service



I have been asked by a number of residents, both in Birchanger and in other villages served by the route, about the Consultation regarding the 7/7A bus service. As we all know and certainly those who rely on the service are particularly aware the reliability of the service has been disrupted of late both by the roadworks at the Birchanger roundabout and at other locations along its route. The intention of the Consultation is to make sure that ultimately the service best meets the needs of the users, and any alterations will be with that in mind.

It is true to say that the viability of the service has always been challenging but at the far end of the route financial support has been secured by a Section 106 Agreement from the Bloor Homes development in Elsenham. However, with all these things it is a matter of “use it or lose it” so please respond to the consultation and make your feelings heard. More importantly, let's make sure the service is fully subscribed.

Ray Gooding - Essex County Council Member for Stansted



Editors Letter Box



New Picnic Benches

Birchanger Parish Council lashed out and purchased two new picnic tables to replace the old dilapidated pair in the park play area. Councillors spent half a day puzzling how to put them together but managed to assemble them in the end :-)



Success at the Charity Dog Show

The Charity Dog Show held on the 7th October was a great success. The best in Show was Xenia - a Rhodesian Ridgeback and the reserve best in Show was Luna - a Norwegian Buhund. Both are pictured together in the photos. The rest of the classes were well attended and wonderfully performed by our canine friends with a little help from their owners.

The show raised over £500 for The ARC animal rescue charity.



Don't forget, your magazine is only as good as the content it receives, so please keep sending me your news, views, notices, concerns and complaints. Advertisers are also welcome. All copy should be submitted by the 16th of the month, preferably sooner and may be edited depending on space and content. Please contact me by E-mail, phone, or letter as shown below. Thank you and Kind Regards,

Join us on Facebook: www.facebook.com/birchanger/

Peter Sampson



magazine@birchanger.com



07817 904333



2 Harrisons, Birchanger

VILLAGE NEWS

By Elizabeth Godwin

The Big Light Up - Coming Soon

It is time to plan for the Birchanger Big Light Up 2023. No matter what chaos is going on around us and we have had more than our fair share in Birchanger this year, all over Birchanger there will be the fantastic Christmas lights which contribute to make a very special Christmas scene for the village. Enjoyed by all it receives many visitors from other areas and cheers up many who are facing yet another cold and possibly lonely Christmas. It is a real pleasure to come out at night and walk down the lane and then explore the side roads because there are Christmas lights all over the village. This year the official Big Light Up Birchanger 2023 will take place at the club on Friday December 1st at 7.00pm. It is hoped that there will be carols sung by the school choir and Christmas treats for everyone. It is always a very special occasion, and the evening will mark the start of Christmas in Birchanger again.

New Kids on the Block

A new team with lots of fresh ideas will be running the Big Light Up event this year and in the future. New ideas will first be put in place for next year due to the surrounding road works and road closures at the moment. However, it is of course the people of Birchanger who really make it happen. It is the one thing Birchanger does that consistently brings people into the village and residents out of their homes to walk through the village and to marvel at the displays which are to be seen everywhere. Everyone looks forward to that special time before Christmas when residents and visitors alike come out to enjoy the sights. Everyone who usually lights up is probably at the 'scratching of heads' and "what on earth shall we do this year" stage but remember that even the smallest Christmas light contributes to the scene. It's nearly time to make Birchanger special again, so let's give it a go!

Use it or Lose it!

Sadly, I am talking about our bus services. The village bus service is being monitored for its use over the next two years, and if we have not made the numbers required to run a paying service, our bus will go. We have been here many times before and always just managed to squeeze back in, but times are tougher now and the rules are much tougher than they were before. So, if you possibly can you please use the bus. There are many people who are totally dependent on bus services in this village. Our guests staying at the hotel as well as the school children and the elderly residents who

have given up using their cars depend upon it. The rest of us should use the service more but for reasons best known to ourselves, we don't. So, the writing is on the wall now, and it is down to us to change it. Many people really need our bus, and it is up to the rest of us to make sure that they keep it.

Chaos in the Lane

Why can't those who have the apparent right to dig up our roads at will get together with each other in an attempt to coordinate their work schedules so that we are not swamped with roadworks all at once. At the time of writing Birchanger Lane is blocked. Those responsible for these works actually tried to come a few months ago so that Birchanger Lane would be blocked both ends. They hadn't thought of that! The roundabout at end of the lane is decimated, in fact it no longer exists. There are mountains of earth on the Dunmow Road so nobody can use that either. The motorway roundabout is nearly all single lanes. On the B1383 someone has decided now is a great time to dig a trench and if you are heading to Stortford, you will find more roadworks on the B1383. And there are more plans to demolish the roundabout where the B1383 meets the A 120 in January. Apparently, the aim is to make the A120 a smoother route to the A10. Not to benefit us, perish the thought. We will be queuing to cross that junction for ages. No doubt more nasties to make our lives more difficult are somewhere in the pipeline. Chaos everywhere. Wonder who else is planning to join the party!

Saving Money?

November is always a difficult month. Christmas looms and a lot of us will be getting a bit twitchy about it. What can I buy them? Where is the money coming from? All those presents, do I really need to get them all? Well, you can cut down on the present giving. Often you buy something or are given the wrong thing. Better perhaps to meet up with friends. Go for a meal or drinks together. More fun than trudging around for a present that the recipient may neither use nor want. It is potentially more fun to meet up with people you have not seen for a long time, than send them something they never wanted anyway. Food shopping in November can be damp and depressing but get it right and there might be a little more spare cash on your card. Make a shopping list and stick to it. Ignore the special offers unless you need the product. They are usually not so special in the end. Vegetables such as potatoes or carrots go further if you don't peel them. They are tastier as well. Start with potatoes then move on to carrots and other vegetables. You will find you do not need so many as when you peeled everything. Try and get your portions right. Not everyone eats the same amount. You could try making ice lollies from leftover fruit, or ice cubes with lemon slices. Could be useful at Christmas. You may not save much but as they say every little helps.

Don't Get Caught in An Online Crisis

Most people are managing their shopping, banking, doctor's appointments and much more online. However, there are still those for whom the internet is a scary unknown territory in which they feel insufficiently equipped to venture into. They turn their backs on the internet but find it difficult to live their lives without it... Cont P4.

Birchanger All Girls Society

The 'BAGS' welcome women to join them on the last Wednesday of every month at 8.00 pm in the village hall.

Next meeting:

Wednesday 29th November 7.45 for 8.00 pm

bags@birchanger.com

Olivia: 07568 574703

Rosemary: 01279 814678

Liz Turner: 07473 508056

Booking annual services for appliances, cars and doctor's appointments seem to be mountains too hard to climb. For some it may be too late to learn, for others it could be that a computer savvy mentor is what they need to help them to get going. If things carry on in the direction they are now heading, we shall be doing everything from shopping to organising our boiler services online. Most people already do this, but we do need to help those for whom the very prospect of doing anything online fills them with dread. It may seem very easy to us, but if we can help a neighbour to conquer the complexities of the internet their lives will be more interesting in the long term.

Will the Police Use New Laws to Prevent Knife Crime?

It only takes a second to end someone's life. Knife amnesties and collection points have been all very well but still the carnage continues. The government is putting a ban on the highly ornate and popular "zombie knives". Knives, which have no practical or legal use whatsoever are set to be banned under new legislation. Police will have powers to seize these knives and those found to be in possession of them can expect to face a two-year prison sentence at best. Will this be enough? Probably not as the past few months have seen little to stop the increasing death toll from knife crime. More legislation with stronger deterrents are needed.

HMRC and the scammers

Didn't take long for the scammers to infiltrate the Inland Revenue system. The fraudsters are most active at the end of the tax year and self-assessment deadlines. They may tell you that you have received a tax rebate and ask for your personal banking details and additional personal data to transfer the money to your account (which of course they won't). They may ask you to click on links and to open some of your documents. They may ask you for your pin or passwords and they can turn nasty with threats of account closure if you don't act immediately. Treat any such call with suspicion and never give your banking details to anyone – period! It is very easy but very unwise to get involved with a casual contact online or on the telephone over your financial affairs.



PayPal Scams

These demands seem very real as they appear come from a genuine PayPal address. The scammers pose as a genuine organisation and demand large amounts of money, claiming that you have overdue tax payments and demanding that you pay this immediately. These

demands are very worrying as they seem to be so real. Appallingly all your personal details are up there, and it appears to be a genuine demand. If you receive anything like this, close the site down immediately and consult a tax adviser if you have concerns. Frauds like this one are very worrying and appear so genuine. How they get your details is also very concerning.

Where Do Stolen Cars Go?

Well, some of the cars stolen can be found in a woodland glade in Epping Forest. Playing their cards carefully, the police recently were able to find and recover some 15 'cars of interest' which were in the process of having their identities changed prior to being sold to unsuspecting buyers. The thieves were crafty and clever but not quite clever enough. Although the changes the gang made would fool a member of the public, the police found enough forensic evidence to identify not only the true owners of the cars but also the identities of those who were carrying out this criminal activity on site. They were also able to identify others involved in this major car theft operation. So, if you are thinking of buying a second-hand car, do some research and think carefully before parting with your hard-earned cash. If it looks too good to be true it probably is. Ask the owner why they are selling it and do some police checks of your own. Discover the true value of the car in question before handing over any money and try to keep the car you do have as safe as possible. In a locked garage helps, but not everyone has that luxury. An old-fashioned steering lock is still one of the cheapest and best theft preventers on the market but there are a lot of other options out there.



Dog Wardens at Work Throughout Essex

There have been some horrific instances where dangerous breeds of dogs have inflicted terrible damage to people. The common factor in most of these is that although the owner was present in most cases

they would not or could not control their dog. As a result, the dog's victims suffered some horrendous wounds but this rarely gets a mention in the national press. The truth is that most people simply cannot control their dogs. They may love them to bits, but the dogs are mostly sadly lacking in their training. Let's face it, if a dog really wants to do something, they are almost impossible to stop. Apparently, it isn't cool to keep a dog on a lead, but if the dog causes severe injury to someone the owner may find themselves in prison and they don't have a dog at all or the prospect of owning one ever again.

Are We Taking Recycling for Granted?

We've been at it for a while now. This recycling lark. At first, we read anything and everything about it and made sure we put everything into the right bin. Some of us lectured others about how they were getting it all right and maybe others were not quite so good. But as the years went by, we started to get a bit careless. Putting things into the recycling which should not be there. More loads of recycling materials were coming back as contaminated from the disposal contractors. More and more ended up in landfill when the object of recycling is to keep things out of landfill. Now with Christmas coming up we tend to get much worse at recycling. There is just so much rubbish we just pour it all into the black bin, jam on the lid and hope it all gets collected soon. Will we remember to get it right this year. Unlikely. There is talk of new stickers on the bins to remind us. Unlikely to change our Christmas bad habits. We need more than a sticker at Christmas time. For many of us most of our rubbish is simply crammed into the black bin.

ENVIRO ELECTRICAL SERVICES

enviroelectricalservices@gmail.com



DANIEL ROSS
07703484090

City & Guilds Qualified
Part P Registered
DBS Checked

Friendly, Professional electrician with over 20 years experience based in Bishop's Stortford, offering all domestic electrical solutions in Herts & Essex



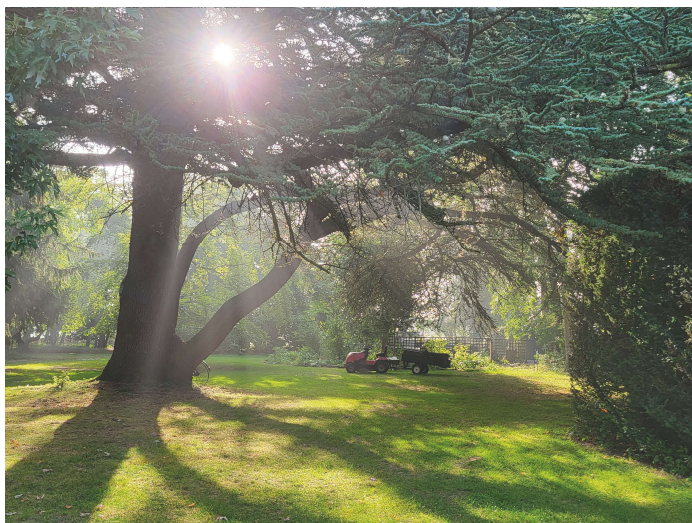
Taylor Landscapes
Landscapes For Living

07941 357934

mark.taylor@taylorsvcs.net

@TaylorLandscapesLtd

THE FORGOTTEN GARDENS OF EASTON LODGE



By November we will have reached the end of the season and closed the gates to visitors. Hopefully by the time you read this we will have completed a lovely and memorable season. In September we had fine weather for our Open Day and welcomed regular and new visitors who experienced the joys of our apples, apple juice, jams, and honey. Local concert band 'Take Note' played a wonderful range of music and a lot of homemade cake was eaten!

October will be a fun finale – with a Halloween themed dog day on our last Sunday Open Day and the local Enchanted Parties group are also having a Halloween event for children in the Gardens.

When the Gates have shut, we turn our thoughts to major projects for the closed season. Last year we put in a new path from the Italian garden to the walled kitchen garden. Visitors have really appreciated it and it is already well bedded in. This year we are planning to complete the project, so the path starts from the car park, and we can make the entrance area more welcoming. Once it is complete the path will help visitors see the glory of the Gardens even when the grass is very wet in spring and autumn months.



Through October the Gardens look lovely in their autumn colours, but that means that in November we need a big leaf clearance effort. It is a group activity, both in raking up the leaves and in squishing them

into the composting bay. By the end of the year the bay is full to overflowing, but it is amazing how quickly the leaves rot down and become usable mulch. We use mulch for protecting the dahlia border and asparagus beds over winter and for keeping moisture in the ground around newly planted trees and shrubs, so we need a lot!

You can see more about what we are up to through the closed season by following us on Facebook or Instagram; looking at the Garden News on our website; or signing up for our e-newsletter through our website: www.eastonlodge.co.uk Jill Goldsmith

u3a

Stansted

A new Line Dancing group is now up and running. To have some fun, turn up at St John's Hall on Thursdays 1.30pm to 2.15pm, except for the 3rd Thursday of the month when the u3a have the monthly meeting. It costs just £5 per lesson and is suitable for all abilities. If you need to know more contact Barbara - bafidell@gmail.com

A new Rummikub (playing cards) group has also just started. Please look online to find out all the details or ask at the next meeting.

An enthusiastic number of the Gardening Group visited the Tudor Garden at Cressing Temple in September. They were given a short introduction to the history of the garden by the Head Gardener, Rebecca. She explained how, in the Tudor period, a garden was required to be a source of medicinal products as well as a source of food. The current design is a faithful recreation due in part to surviving features and the plants used are ones that have been grown since the late Medieval and Tudor period. It is hoped that we can return there when the gardens are at their peak in May and June. If we have enough people, we will be able to enjoy a full guided tour with detailed explanations of the plants and their uses in the Tudor household.

The u3a movement itself has planted almost 10,000 trees as part of its u3a Anniversary Woodland. The trees, although still small, are growing well having survived the hottest and driest summer in South Wales in modern history!

Our Speaker at the November 16th meeting will be Ray Clark, giving a witty and humorous talk entitled 'I Could Say Something Brilliant at Any Moment'. He will tell us how his career started in commercial Radio in the U.K. and the U.S.A.

Stanstedu3a@gmail.com www.u3asites.org.uk/stansted
Eileen Quinn



Saffron Walden
County High School

*A local school of
exceptional quality*



Check out our new
2024 Prospectus

SCAN
HERE



Email admissions@swchs.net to request your printed copy

what's on in the village...



November 2023

*Hello
November*

Household Bin Collections: Bradley Common collected on Fridays. Rest of Birchanger on Thursdays.

Garden Waste Skip 3.00-4.00 pm outside social club: Oct 28, Nov 25

Mon

Tue

Wed

Thu

Fri

Sat

Sun

Birchanger Parish Council Meetings: Meets on the first Tuesday of each month at 7.30 pm in the church hall - **Open to the public.**

		1 Church hall: 10.00 Tai Chi 12.45 Takeley Art 14.00 Tea Room 14.00 Fencing 19.00-21.15 Apton Dance	2 Green Bin Church hall: 9.30 Tai Chi 11.00 Line dance 16.45 Ellouise School of Dance BSSC: 20.00 Bingo	3 Church Hall: 09.30 - 10.30 Apton Dance - Private Lessons 11.00 Pilates	4 Church Hall: 09.00 - 13.00 Apton Kids Dance BSSC: 13.00 Meat draw 21.00 Connor Andrews - Live	5 St Mary's Church: 11.15 am Family Service BSSC: 19.00 Firework Night Display
6 Church Hall: 19.00 - 20.00 Apton Dance Latin/Ballroom BSSC: Quiz Night	7 Church hall: 12.00 Tap Dance 16.45 Ballet 18.45 - 21.00 Apton Dance	8 Church hall: 10.00 Tai Chi 12.45 Takeley Art 14.00 Tea Room 14.00 Fencing 19.00-21.15 Apton Dance	9 Black Bin Church hall: 9.30 Tai Chi 11.00 Line dance 16.45 Ellouise School of Dance BSSC: 20.00 Bingo	10 Church Hall: 09.30 - 10.30 Apton Dance - Private Lessons 11.00 Pilates	11 Church Hall: 09.00 - 13.00 Apton Dance for kids BSSC: 13.00 Meat draw	12 St Mary's Church: 10.50 Remembrance Service BSSC: Sunday Roast
13 Church Hall: 19.00 - 20.00 Apton Dance Latin/Ballroom BSSC: Quiz Night	14 Garden Bin Church hall: 12.00 Tap Dance 16.45 Ballet 18.45 - 21.00 Apton Dance	15 Church hall: 10.00 Tai Chi 12.45 Takeley Art 14.00 Tea Room 14.00 Fencing 19.00-21.15 Apton Dance	16 Green Bin Church hall: 9.30 Tai Chi 11.00 Line dance 16.45 Ellouise School of Dance BSSC: 20.00 Bingo	17 Church Hall: 09.30 - 10.30 Apton Dance - Private Lessons 11.00 Pilates	18 Church Hall: 09.00 - 13.00 Apton Kids Dance BSSC: 13.00 Meat draw 21.00 Redonizm - Live	19 St Mary's Church: 11.15 Matins Service BSSC: Sunday Roast
20 Church Hall: 19.00 - 20.00 Apton Dance Latin/Ballroom BSSC: Quiz Night	21 Church hall: 12.00 Tap Dance 16.45 Ballet 18.45 - 21.00 Apton Dance	22 Church hall: 10.00 Tai Chi 12.45 Takeley Art 14.00 Tea Room 14.00 Fencing 19.00-21.15 Apton Dance	23 Black Bin Church hall: 9.30 Tai Chi 11.00 Line dance 16.45 Ellouise School of Dance BSSC: 20.00 Bingo	24 Church Hall: 09.30 - 10.30 Apton Dance - Private Lessons 11.00 Pilates	25 Church Hall: 09.00 - 13.00 Apton Dance for kids BSSC: 13.00 Meat draw Josh's Quiz Night	26 St Mary's Church: 11.15 am Holy Communion Service BSSC: Sunday Roast
27 Church Hall: 19.00 - 20.00 Apton Dance Latin/Ballroom BSSC: Quiz Night	28 Garden Bin Church hall: 12.00 Tap Dance 16.45 Ballet 18.45 - 21.00 Apton Dance	29 Church hall: 10.00 Tai Chi 12.45 Takeley Art 14.00 Tea Room 14.00 Fencing 19.00-21.15 Apton Dance 20.00 BAGS	30 Green Bin Church hall: 9.30 Tai Chi 11.00 Line dance 16.45 Ellouise School of Dance BSSC: 20.00 Bingo			



BIRCHANGER SPORTS
AND SOCIAL CLUB

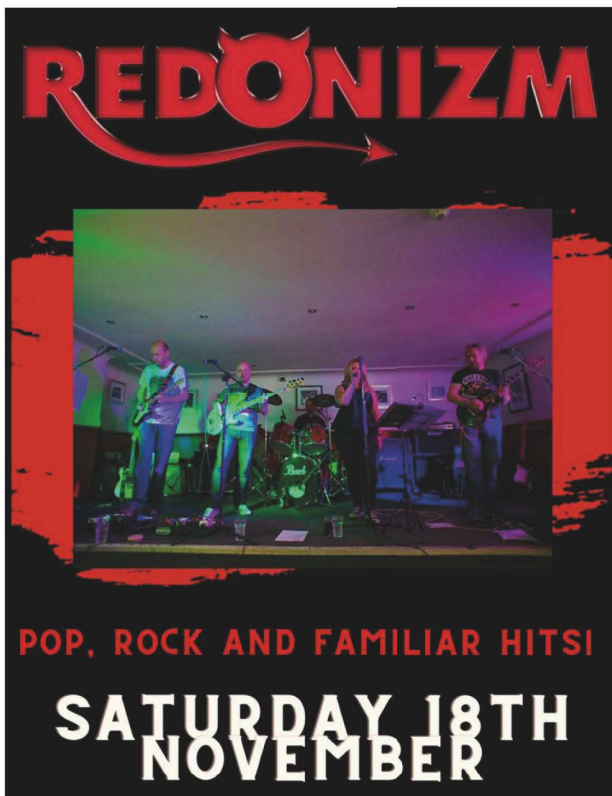
NEWS FROM THE CLUB



NEW MEMBERS WELCOME

We welcome new members. To join you can either complete the online application or speak to a member of staff at the Club.

For more information visit
www.birchangerclub.com

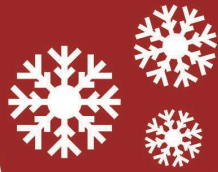


For all general enquiries

Telephone: 01279 813441 Email: club@birchanger.com
Website: www.birchangerclub.com

Follow us on Social Media
For all news and announcements





BIRCHANGER SPORTS
AND SOCIAL CLUB

CHRISTMAS AT THE CLUB

Christmas Menu

*December 1st -24th
3 Courses £26.95*

Pre-booking essential

*Contact the club for menus
or further information*

'LIGHTS UP' Weekender

Our traditional village lights up will take place 1st December

Children's
Carol
Choir

Mince
Pies

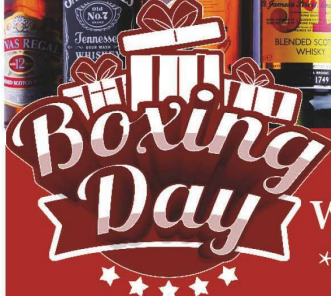
Mulled
Wine



17th
DEC

Members Only Kids
Christmas Party

Fun filled
afternoon
of Games and
Entertainment



Whiskey Draw
RAFFLE

NEW YEAR'S EVE PARTY

For all general enquiries

Telephone: 01279 813441 Email: club@birchanger.com

Website: www.birchangerclub.com

Follow us on Social Media

For all news and announcements





Night Flights – Smoke and Mirrors

If you feel that there are more Stansted night flights than ever, you'd be right. Stansted Airport Watch (SAW) has finally been able to establish what's been happening.

Stansted is allowed a maximum of 13,700 flights a year during the 6½-hour core night period from 11.30pm to 6.00am. That, incidentally, is more than twice the number allowed at Heathrow, so local residents in this part of the world are entitled to feel they have drawn the short straw. And that's not the whole story. The annual limit of 13,700-night flights is divided into a summer limit of 8,100 and a winter limit of 5,600. The summer period coincides with British Summer Time, and normally lasts for 31 weeks, from the last Sunday in March to the last Sunday in October.



The numbers for this summer are not yet available but SAW has been able to establish that Stansted handled 10,509-night flights last summer compared to the statutory limit of 8,100. However, Stansted management insist that they have not broken the rules. This is all made possible by a clever three-card trick. Here's how it works.

Step 1 – The night flights legislation (which applies to Heathrow and Gatwick as well as Stansted) allows up to 10% of the previous winter's allowance (if the allowance has not been fully used) to be carried forward to the following summer. That added 560 flights to Stansted's summer 2022 allowance, increasing it to 8,660-night flights.

Step 2 – The legislation also allows an airport to overshoot it's allowance by up to 10% and carry this forward by reducing the allowance for the next winter period. That added another 810 flights to Stansted's summer 2022 allowance, increasing it to 9,470.

Step 3 – Finally, the Secretary of State allows Stansted management to use their own discretion to disregard certain night flights. These are known as dispensations and they are mostly granted when an aircraft which was scheduled to arrive or depart before 11.30pm, actually arrives or departs after 11.30pm, thereby becoming a night flight. In the 2022 summer period, Stansted management granted a total of 1,201 dispensations. Hey Presto! The combined effect of steps 1, 2 and 3 enabled Stansted to handle over 10,500-night flights last summer without breaching the statutory limit of 8,100.

SAW was only able to obtain this information by submitting a series of requests to the Department for Transport under the Freedom of Information Act, by pressing Stansted management to explain the apparent disparity in the number of night flights, and also by writing directly to the Secretary of State asking for an explanation. SAW has also been able to obtain comparative information for Heathrow and Gatwick which shows that they are far less liberal in granting dispensations. Compared to the 1,201 dispensations granted at Stansted last summer, Gatwick granted 576 dispensations and Heathrow granted just 415. This is despite the fact that Stansted is by far the smallest of London's three main airports.



The vast majority of dispensations granted by Stansted management were Ryanair flights and were categorised as being delays due to bad weather (mainly "thunderstorms") and Air Traffic Control problems. However, this begs the question as to why Stansted flights should be so much more prone to thunderstorms and Air Traffic Control problems compared to Heathrow and Gatwick?

SAW is still waiting for either the Secretary of State or Stansted management, or both, to answer this question. Meanwhile many local residents may feel that it's time to stop Stansted management marking their own homework. Better still, it's time to dispense with dispensations!

ST MARY'S CHRISTMAS DINNER



Saturday
16th December
At 2.00 pm.

Traditional meal with all the trimmings and a visit from Santa - £20 per adult. No charge for children with an adult. Open to all villagers.

Church attendance welcomed but not essential.
Book your place by contacting Pam Lee on:
07702171744

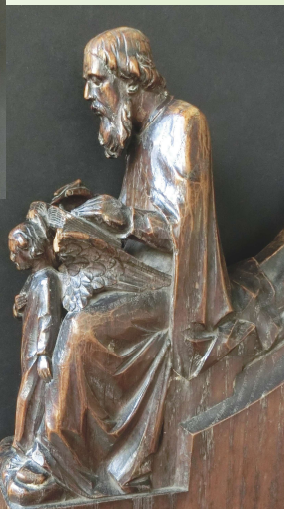
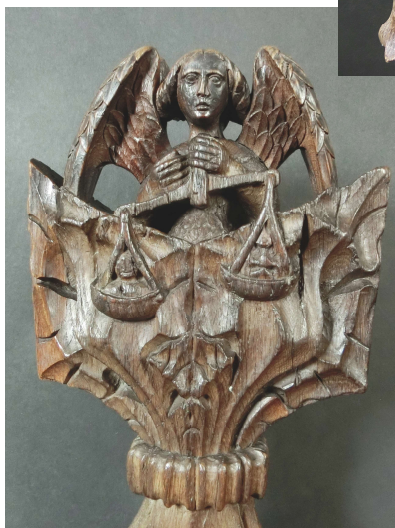


The Hundred Parishes Society

Before the 15th century, people attending a church service would stand or kneel. When benches or pews were introduced, they were sometimes decorated by skilled craftsmen. In particular, the top of the ends of some pews were carved with figures called finials or poppyheads.

The word poppyhead comes from Latin via Old French meaning the poop or figurehead of a ship. Poppyheads can be found in churches across the country and they are particularly prevalent in East Anglia. The Hundred Parishes has some fascinating examples.

The carved figures can represent almost anything. Some are of flowers or fruit or animals. Mythical creatures or demons were introduced to remind parishioners that if they led a sinful life they would go to hell. Saints and angels however meant that if you lived a good life you would go to heaven.



You will also find carved creatures depicting saints. In St. Mary's, Hatfield Broad Oak, 300-year-old poppyheads symbolise saints, with a lion for Mark, a bull for Luke and an eagle for John, while

Matthew is represented by a 'divine man'.

Ickleton's parish church has some fine examples of medieval carved poppyheads. One shows St. Michael weighing souls of the dead and another features a dragon-like creature.



In Wendens Ambo parish church you will find a fearsome-looking beast which you may meet if your soul goes to hell! Linton's church has a wide range of subjects including scribes resting their books, one on the back of an angel and another on a dragon.

When you are out and about, I encourage you to seek out these wonderful examples of ancient craftsmanship. Please let us know of others on either the feedback page on our website, www.hundredparishes.org.uk or share a photo with the Hundred Parishes Group on Facebook: www.facebook.com/groups/562396892237665

Ken McDonald, Secretary www.hundredparishes.org.uk



P. D. Tucker & P. Stapleton

Hazel End Road, Hazel End, Bps Stortford, Herts CM23 1HB

Tel: 01279 813429

Mon-Sat: 12noon - 3pm & 6 - 11pm Sunday: 12noon - 3pm

Village Services and Activities

Service	Contact	Telephone No.
Allotments	Council Clerk	01279 814773
Alzheimer	Marian	07803 115826
Art Studio & Gallery	Heather Brown	01279 815453
Ballroom Dance	Fred Winters	01763 271942
Ballet for kids	Philippa McMeechan	01763 271010
BAGS	Rosemary Wheatley	01279 814678
Beauty Therapist	Sarah Whiting	07887 638359
Beauty - HEH Nails	Hana Hainsby	07730 619522
Birchanger Magazine	Peter Sampson	07817 904333
Butterflies Preschool	Carly Richards	01279 810800
BSSC Club	Terry Earnshaw	01279 813441
Car Service, MOT, Gas	D. Bonney	01279 813315
Car Service - Mobile	B. K. Autos	07786 461813
Chiropodist	Julie Golden	01279 873492
Dance - Apton Studio	Maxine Williams	07854 251528
Dementia	Debbie Baker	07927 011345
Garden Services	GWB Horticulture	01799 543483
Garden Services	Will Grange	07516 783138
Hairdresser Men/Boys	Emma Marks	07527 227943
Handyman	Charlie Grange	07514 783239
Holistic therapy/Reflexology	Shelley Williams	07476 279262
Landscaping Services	Mark Taylor	07941 357934
Launderette	Ian Kennedy	01279 866183
Line Dancing	Shelley	01279 864781
Neighbourhood Watch	Peter Sampson	07817 904333
Painting & Décor	David Debnam	07973 861268
Parish Clerk	Keith Williams	01279 814473
Pilates	Mandy Cousins	07713 272664
Public Safety	Peter Sampson	07817 904333
Speed Watch	Peter Sampson	07817 904333
St. Mary's Church	Pam Lee	07702 171744
Tai Chi	Cait Goddard	07415 628935
The Three Horseshoes	Paul & Paula	01279 813429
The Three Willows	Mark Boden	01279 815913
Village Church Hall	Cat Roberson	07475 092658

St. Mary's Church



Church services - 11.15 am

5 th November	Family Service with Jo Pratt/Pam Lee
12 th November	10.50 am Remembrance Service with Jo Pratt
19 th November	Matins with Jo Pratt
26 th November	Holy Communion with Revd Colin Fairweather

Church News

Birchanger Bethlehem Trail

You are invited to help us build our trail from the Lychgate to the church door. You may recall that just before the covid lockdown children around the village decorated stones and hid them about for others to find. Eventually those stones formed a snake in the Church Hall carpark. It was a wonderful sight. We want to build something similar representing Mary and Joseph's journey to Bethlehem, Christ's birth and the Christmas story in general.

What we invite you to do is decorate stones in whatever way you feel appropriate – maybe the manger, baby Jesus, wise men, shepherds, a donkey, Christmas tree. You can do as many as you like. It's a competition with a prize for the overall winner and a present for every child that takes part. Age is no barrier so start decorating your entry now. If you need some stones to paint, Pam Lee has acquired a few which you can get by contacting her.

When you have finished, please bring your stone(s) to church on either the 26th November, 3rd December, 10th December or 17th December (when we shall hold our Christingle service). We can then record your entry and contact details then display stones on the altar before moving them outside to become part of the Bethlehem Trail. We would love to make it all the way along the path and hope that lots of people take part.

A huge thank you to all those who came along and made our Family Prize Bingo evening such an enjoyable event. Its was great to see so many smiling faces when children won most of the prizes and frustration on some peoples faces when they were "pipped at the post". Your support is much appreciated.

Future Dates for Your Diary

12 th December	Christmas Coffee Morning at Moorswood
16 th December	Christmas Dinner in the Church Hall
17 th December	Christingles in Church
22 nd December	7.00 pm Carol Service
25 th December	Christmas Morning Service

Pam Lee (Church Warden)
Tel: 07702 171744
pam.mark2@btinternet.com



Village Church Hall

Modern hall, superb kitchen and additional meeting room available for hire



Tearoom open every Wednesday from 2.00 pm

For bookings or further information please contact:

Manager: Cat Roberson

Telephone: 07475 092 658

Email: birchangerhall@gmail.com

Village Church Hall



For information and bookings contact:

Manager: Cat Roberson

Telephone: 07475 092658

Email: birchangerhall@gmail.com

THE THREE WILLOWS

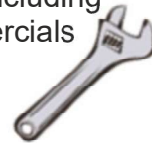


Fine dining, takeaway & good beers. Children and dogs welcome. Bookings: 01279 815913
Monday to Thursday: 12 to 3pm & 5 to 11pm
Fri/Sat: 12 to 11pm Sunday: 12 to 7pm

B.K.AUTO'S

Fully Qualified And Insured
Mobile Mechanic

Located within Birchanger,
all makes and models serviced
and repaired, including
4x4 & commercials



Contact: Ben
07786461813

D. Bonney & Sons



Motor
Engineers

MOT Testing - Servicing - Diagnostic
Mechanical Repairs
Selection of New and Used Cars

Yew Tree Corner, Manuden
Ring Malc or Niel on
01279 813315 or 01279 815946

State Registered Chiropodist

Mrs. Julie Golden S.R.Ch.

Home Visiting Practice

Est 1994
Tel: 01279 873492
Mob: 07916075451
Dunmow Road
Takeley CM22 6SH

Painting & Decorating



Bring new life to
your home
Interior - Exterior
General
Maintenance
No job too small

David Debnam
Tel: 01279 815214 Mob: 07973861268

GRANGE
MAINTENANCE

MOB: 07516 783138



Grass & Hedge
Cutting
Fencing
Turfing
Patio & Driveway Cleaning
Grounds Maintenance Contracts

Contact Will Grange - 07516783138

SUDS Launderette

WASH & IRON SERVICE
CLOTHES - BEDDING - DUVETS

Opening Times
Mon - Fri 9.00 am - 6.00 pm
Sat - Sun 9.00 am - 6.00 pm

Hockerill Lights, Bishop's Stortford
Large car park at rear
Tel: 01279 866183

mediacoms

Aerial Satellite AV Security

- Aerial Installations
- Sky Installations & Subscriptions
- CCTV & Security Alarms
- Freesat Installations & Receivers
- Audio Visual Installations
- Multiroom Music & TV Distribution
- Wireless & Wired Networks
- TV Wall Mounting Services
- Family Run Business



Freeview

digital

sky

freesat

col plus

01279 656 983 - 0800 587 2556

Unit 1, Suite 1 Peak Business Centre, Woodside Industrial Estate, Bishops Stortford CM23 5RG

Wireless Security

Intruder alarms



Intruder alarms have never been so
simple to install,
operate, maintain and clean.

Mediacoms uses the latest
technology to keep you & your
property secure.

YOUR HOME AND COMMERCIAL SECURITY INSTALLER
ALARMS CCTV DOOR ENTRY GATE AUTOMATION

www.mediacomms.co.uk

info@mediacomms.co.uk



Perfectly Pampered

Complementary & Holistic Therapies
By Shelley Williams MGHT

07476 279262

Birchanger CM23 5QT

The natural approach to the wellbeing of
women, focusing on relaxation, improving
sleep, relieving stress, fatigue and anxiety
through reflexology, facial and body massage
therapies.

MGHT Accredited & Insured



Friendly, Professional & Reliable
Sustainable Garden Services Provider
Gardening, Landscapes & Tree Works

Tel: 01799 543483 Mob: 07866 752713

One off Garden Tidies	Regular Garden Maintenance
Hard & Soft Landscaping	Tree Pruning, Felling & Reductions
Hedge Cutting & Trimming	Fencing & Timber Structures
Advice & Planning	Traditional Countryside Crafts
Planting and Plant Sourcing	Leaf & Snow Clearance
Log Splitter & Operator Hire	Soil, Log & Aggregate Delivery
Chipper & Operator Hire	

Free No Obligation Quotes
www.gwbhorticulture.co.uk

The Birchanger Village Magazine is published on behalf of the people of Birchanger and distributed free to 450 households in Birchanger. The views expressed herein do not necessarily reflect those of the editor, the magazine or any organisations or institutions represented. Material sent to the editor will generally be printed as received providing it is considered suitable by the magazine team. The editor reserves the right to edit content if considered unsuitable or where insufficient space is available. All material should be submitted by the 16th of the month to be published the following month.

Printers: Keeley & Lowe Tel: 020 7729 3350 - Email: info@keeleylowe.com

Editor: Peter Sampson Tel: 0781 7904333 Email: magazine@birchanger.com

Chairman: Elizabeth Godwin.

Treasurer: Ken Wheatley.