



Birchanger Village Magazine

March 2023

Issue 242



Birchanger Suffers Repeated Catalytic Converter Thefts

Around 34,000 catalytic converters are cut from cars in the UK every year! Catalytic converter theft most frequently occurs in car parks but can just as easily occur in your driveway, at the roadside, in fact anywhere! For an organised crime team with the right tools, it can take them just 5 minutes to remove and drive away with your converter. Thieves will then sell them on via scrapyards, unscrupulous car dealers, repair shops, online or ship them out of the country. The catalytic converter is part of the exhaust system. Hybrid vehicles are most commonly targeted and include Toyota Prius, Toyota Auris, Honda Jazz and the Honda CR-V as their metals are more valuable, but any vehicle can be at risk of catalytic converter theft. These are often sold for up to £600. A replacement catalytic converter can cost from £200 to £2,000+ depending on the car, the average being £1,500.

Birchanger recently had three catalytic converters stolen from cars parked on residents drives or on the roadside outside their homes. One resident who interrupted the thieves during a theft was even threatened with a baseball bat, which according to police reports is not uncommon. The advice is therefore not to approach the thieves but to call 999 immediately.

How to help prevent your catalytic converter being stolen!

Choose where to park your car carefully. Where possible, park your car in a locked garage. If you don't have the luxury of off-street parking or you're not at home, you should park with the side of the car closest to the catalytic converter near to a fence, wall, high kerb, or other vehicles, and avoid mounting the pavement on two wheels. In most cases this is the side where your exhaust pipe is.

Catalytic converter thieves need to get under your car to get a hold of their loot. You should make this as difficult as possible and give them limited space to use a jack and to slide beneath your vehicle to unscrew bolts or cut parts away using power tools. Some brazen criminals will work in broad daylight, but parking in well-lit areas to prevent the thieves from working under the cover of darkness can help.

Boost your home security. To boost your home security, you can invest in a CCTV system and/or alarms for your driveway. Add a motion-triggered security light overlooking your drive. Not all security features have to involve top-of-the-range technology. You can try adding gravel or other loose material to your drive to deter intruders from stepping foot on your property. You should also ensure that fences, bushes and walls at the front of your garden are no more than one metre high.² That way you give intruders less opportunity to hide and can keep an eye on your car if it's parked on the street outside your property. Add a lock, guard, or alarm to your vehicle. Locks and guards for the underside

of cars are available. However, you should declare the security features with your insurance provider and check if adding one might affect a future claim. Some manufacturers are offering locks to slow thieves down if they try to remove your catalytic converter. Toyota, for example, will fit a 'Catloc' for the Prius (3rd generation) and Auris (2nd generation). You can contact your Toyota dealership for more information. Elsewhere, mechanics have started fitting makeshift 'cat cages' as an extra layer of protection.



Mark your catalytic converter. You can ask a garage to add a serial number to your catalytic converter. The Scrap Metal Dealers Act requires that dealers check the identity of sellers against the unique code. You'll also receive a window sticker indicating that your catalytic converter has been marked – another way to deter potential thieves.

Report suspicious activity to the police

It may seem obvious but contacting the police is one of the best ways to prevent catalytic converter theft. If you see a crime being committed, phone 999 immediately. If the situation isn't an emergency, try calling the police on 101. Alternatively, you can report an incident online at <https://www.essex.police.uk/ro/report/> Whatever you do, you should gather as much information as possible, including any vehicle registrations.

Birchanger has its own residents Facebook page and is a good source for conversing with other residents. You can also receive notifications of local activities, information, and real time reports of suspicious activities. The Facebook page is private and only accessible to the people of Birchanger. You can apply to become a member by going online and typing: <https://www.facebook.com/groups/283147695598967>.



Challenges & Opportunities for Birchanger Wood

Ash dieback continues to ravage our stock of mature ash trees, causing a massive financial headache for the charity as it requires professional arborists to fell the trees located next to the A120. Sales of our firewood, some of which has come from the felled ash but largely from our coppicing activities, soared ahead at Christmas time and by January we had sold out, forcing us to suspend sales. The funds raised by wood sales help pay for the work on the

dead and dying ash. However, we still need funds to plant replacement trees and we are applying for a grant from Uttlesford's Zero Carbon Communities fund to pay for large saplings. This will quickly re-establish forest cover and maintain the woodland's structure. More work is likely after nine ash trees died during last summer due to the drought putting our trees under stress.



Birchanger Wood is not just affected by deadly fungal disease, but also by climate change. In some years, an early spring has caused November moth caterpillars to hatch early. While their main predators, the blue tits, can adjust hatching times according to the availability of their prey, they cannot keep up with the scale of the change. As a result, the canopy can be prone to serious defoliation by surges in the number of moth larvae. However, we have witnessed a rise in parasitic wasps, who inject fertilised eggs inside the caterpillars, which then hatch and feast on the flesh from the inside. It may seem brutal, but these wasps can step in when tits cannot and are therefore essential for tree health.

The Trust is looking to combating the effects of frequent drought and floods by slowing the pace of water flow through the woodland stream. Volunteers have been constructing leaky dams, which helps maintain moisture levels in the wood. We have also constructed a wildlife pond inside our compound, to support insects and amphibious creatures. Maximising Birchanger Wood's biodiversity is crucial to our woodland, particularly in times of climate stress. We are collaborating with a local beekeeper to establish wild honeybee habitats in the wood with the installation of swarm boxes. By establishing native wild bee colonies, we can support the bees develop resistance to existing and emerging pathogens that are posing a risk to our native bee population, including the varroa mite and fungal diseases. The wild bee

boxes will be located well away from people in the woodland canopy and will enable bee colonies to thrive, helping to improve the health of swarms and supporting the pollination of trees and plants, including crops.

One of Birchanger Trust's objectives is public education on woodland conservation and ecology. Our annual open days held every August are always a roaring success, enabling the public to see our work and the role of woodlands in our community. We are now looking at two open days a year, with one in the Spring to take advantage of the woodland waking back to life after the Winter. Jono Forgham, a local woodland ecologist, is planning a year-old natural history survey to examine biodiversity. He is also set to launch a 'Bug Club' for children, who are the most enthusiastic visitors to our open days and enjoy insect identification.

As always, we welcome new volunteers. Anyone who is interested should come to the compound next to the water tower in Heath Row, Bishop's Stortford, on a Saturday. Work starts at 8.30am, but volunteers can give whatever time they can in the wide range of activities, with opportunities for people of all ages and physical abilities. Find out more online at www.birchangerwoodtrust.org



Daniel Brett, Secretary, Birchanger Wood Trust

Don't forget, your magazine is only as good as the content it receives, so please keep sending me your news, views, notices, concerns and complaints. Advertisers are also welcome. All copy should be submitted by the 16th of the month, preferably sooner and may be edited depending on space and content. Please contact me by E-mail, phone, or letter as shown below. Thank you and Kind Regards,

Peter Sampson

Join us on Facebook: www.facebook.com/birchanger/



magazine@birchanger.com



07817 904333



2 Harrisons, Birchanger

VILLAGE NEWS

By Elizabeth Godwin

Months of Traffic Chaos

Birchanger's months of traffic chaos show little sign of abating. Nobody seems clear on an end date, and experience has shown that it would mean very little even if there was an answer. Parts of Birchanger Lane appear to have gone through a mincer with little prospect of anything on four wheels ever being driven on that part of the lane again.

With all traffic entering and leaving the village by one main entrance it only takes the smallest traffic incident to completely wreck the system. A bus caught up in one incident ended up at Duck End. The bus company involved had told the driver after one incident to carry on straight through the village. Turning at Duck End is tricky enough for small vehicles never mind a double decker bus. Actually, exiting onto the B1383 is nearly impossible now at any time of the day as traffic on this road has increased in volume and seems intent in keeping anything trying to exit Birchanger well inside the village. It is no surprise that there are serious accidents. Nobody knows when this will be over. On most days there appears to be little work being carried out at either roadwork site and the County Council are being very coy with any useful information.

Swans Killed and Dumped

It is hard to understand how anyone would want to kill a swan, but that is what happened in an Essex village over the Christmas period. Swans are lovely birds and this swan doubtless put up a good fight, but it seems that anything slightly unusual in the bird world is at risk these days. All our native birds are declining. They do not need any help from the human race, who are the architects of their downfall already.

Recovering from Winter

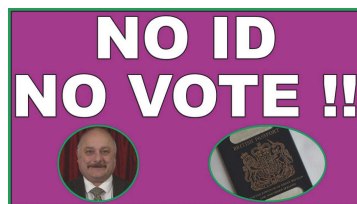
Not many of us will have come through the winter months totally unscathed. It may be repeated colds and viral infections. The unwelcome attentions of long Covid which have pulled so many individuals down for months and those who are struggling to return to anything resembling the normal life that once they led. Recovery may not be the same for everyone. For some it might be a holiday in a warmer country, perhaps a complete house makeover, if they have the energy, or slinging out all old clothes for an entirely new wardrobe. Or perhaps, telling Aunt Agatha what you really think of her constant presence in your home and her vitriolic

comments at last. Whatever your winter frustrations, the minor irritants in your life should be removed, speedily and hopefully a new direction of travel will emerge to change your life for the better.

Watch Out - Cold Callers About

Seems to be that time of year when after quite a long gap, cold callers are about in the district. Be very careful. The goods they sell are generally of poor quality and the prices asked are high. The sellers are often somewhat overzealous and customers feel coerced into buying something. If they don't these sellers can turn very nasty indeed, telling their victims that they are just out of prison and are trying to rehabilitate themselves. Not true.

The elderly are an easy prey. Best not to open your door to any caller you do not know and who you were not expecting. Better still get yourself a Ring Doorbell/camera (or other make) whereby you can see who's at the door before opening.



Are You Ready with your Photo ID to Vote on May 4th?

New voting regulations require a photo ID and so for the May 4th elections you will need a photo ID in order to vote. For all future voting, it will be necessary to show a photo ID, or alternatively, a 'Voter Authority Certificate' (VAC) at all polling stations. You can use an up-to-date passport or driving licence, senior citizen bus pass, blue badge, or oyster 60 plus card for your identification. For those who have none of these methods of ID, you can apply for a paper ID - Voter Authority Certificate by using GOV.UK Portal online at: <https://www.gov.uk/apply-for-photo-id-voter-authority-certificate>.

You can also apply for postal voting online at:

<https://www.gov.uk/government/publications/apply-for-a-postal-vote>

The closing date for VAC applications is 25th April. You have until 18th April to apply for a postal vote. Right across the country, the message is clear. No accredited photo ID or valid Voter Authority Certificate – NO VOTE! Will this stop election fraud? Probably not for long, confusion at the polls is guaranteed and fraudsters will soon find a way around the process.

Birchanger All Girls Society

The 'BAGS' welcome women to join them on the last Wednesday of every month at 8.00 pm in the village hall.

Next meeting:

Wednesday 29th March 7.45 for 8.00 pm

bags@birchanger.com

Olivia: 07568 574703

Rosemary: 01279 814678

Ukrainian Refugee Support Volunteer at Stansted Airport

UCAN are looking for volunteers to support Ukrainian adults and children arriving at Stansted Airport. Four hourly shifts, 7 days per week between 9am – 12.30am, two volunteers are needed per shift. Volunteers will be led and supported by an onsite Volunteer Co-ordinator with full induction and training provided online.

Free car parking. Mileage, food and drink will be provided.

To find out more please contact us:

Tel: 01799 510525 or Email: volunteer@ucan.org.uk

Winter Confusion

For many people in Birchanger Winter 22/23 has been particularly crazy. The closed lane has been quieter, and less traffic has been driving through, but the road closure has led to other problems as visitors try to negotiate their way in and out. School traffic tries to enter and exit the village via Tot Lane in ever increasing numbers sometimes causing chaos! Buses and lorries ignore the signs and seem to do their own thing and when that goes wrong attempt to turn around in the strangest places. In years to come, we may be able to joke about this but at the moment, for most of us, we are not ready to even raise a faint smile yet.

Essex Police Force Expanding

Recent events nationally may have made some of us feel a little concerned about the adequacy of our various police forces, but in Essex our police force will be stronger than ever with numbers set to rise by 900 police officers by the end of this month. Here in Birchanger we may feel somewhat starved of an actual regular police presence in the village but though we rarely see a policeman, they do seem to somewhat miraculously appear when we need them. As long as they continue to be there when they are required we shall have to settle for that.

It seems that proactive policing in the form of crime prevention is on the back burner for now, but some of us may be wondering if we have ever really seen it.

Facing Up to Fuel Bills

For most of us the winter fuel bills are to be very high compared to what we paid last year. Even with the various government payments the final reckoning may be a great deal larger than last year. Very easy to have a panic attack when you see the total amount. You need to check it is right. Have the various government payments been taken into consideration? Do you have any special allowances or conditions which warrant extra help? If in doubt seek professional help, the Citizens Advice Bureau is very good at helping out. Alternatively, if you are not entitled to any further allowances check the bill is accurate and talk to your electricity, gas, or oil supplier and try to arrange an easier payment scheme and schedule for your particular circumstances. Doing nothing is not an option.

Police Dog Patrols

In certain parts of Essex Police dog patrols are at work, patrolling areas where there are likely to be higher proportions of the more aggressive breeds of dogs in residence. The police seem to regularly come across these more dangerous breeds regularly on their spot checks. Their owners have usually failed to notify the authorities that one of these more dangerous breeds is in their possession and is often in a household which includes young children. Why anyone would keep these types of dogs in households with young children is a mystery, especially as it would appear that children have easy access to the dogs and as is well known, these dogs are easily provoked. Any dog can turn when playful teasing goes wrong, never mind one of the more dangerous breeds. If you keep a dog

with young children, that is fine. Just remember that any dog is an animal and can certainly behave like one if provoked beyond its endurance level.

Have You Registered Your Appliances Yet?

Many of us fail to register our appliances with the manufacturer whenever we get a new item for the home or garden and as such could be missing out on possible benefits. You can register an appliance with the manufacturer at any time. The appliance must be under 12 years old, and it does not matter if it is not brand new, just under twelve years old. Second hand items are also accepted, and proof of purchase is not necessary.

Many people inherit their appliances when they move house but that does not affect their registration by a new owner. Last year there were some 250 appliance fires in Essex. The most frequent offenders were ovens, tumble dryers, washing machines and fridges. All items in everyday household use. You can register them now on registermyappliance.org.uk. By doing this you will receive notifications about any safety alerts or recalls by the manufacturers. Furthermore, registering new appliances makes it easier to claim under warranty.



Garden Waste Skip is back!

The garden waste skip will be parked adjacent to the social

club on Saturdays between 3.00 and 4.00 pm each month on the following dates:

Mar 18, Apr 15, May 13, Jun 10, Jul 8, Aug 5, Sep 2 & 30, Oct 28, Nov 25



Would you Like to Join a Scout Movement at Wood Lane, Birchanger!

Are you interested in your child joining the Beavers, Cubs, or Scouts in Birchanger village? Currently children have to be taken to Stansted or elsewhere to get involved in scouting. Or would you like to become a leader? We can provide you with the required training and give you the support you need to get started. We have a building dedicated to scouting use in Wood Lane (just behind the social club), so if your child is interested in joining the scout movement or if you would like to become a leader, please get in touch with us by emailing Peter Lambert at lamberts.pc@btopenworld.com

ENVIRO ELECTRICAL SERVICES

enviroelectricalservices@gmail.com



DANIEL ROSS
07703484090

City & Guilds Qualified
Part P Registered
DBS Checked

Friendly, Professional electrician with over 20 years experience based in Bishop's Stortford, offering all domestic electrical solutions in Herts & Essex



Taylor Landscapes
Landscapes For Living


07941357934


mark.taylor@taylorsvcs.net

 
[@TaylorLandscapesLtd](https://www.instagram.com/TaylorLandscapesLtd)

A Rather Unusual Funeral

A Funeral was held on January 25th at the Aylesbury Vale Natural Burial Ground in Buckinghamshire to commemorate the passing of Birchanger Sports & Social Club President William Mackenzie Fraser who died on December 12th, 2022. As a mark of respect three representatives from the club were in attendance: Trustees Alan Levine, Ken Wheatley and Eddie Gilbey representing the club membership and Committee.

Mr Fraser had been Club President for a number of years having succeeded his own father Mr Charles Fraser. All of the club's presidents have been descendants or relatives of Sir Charles Gold who founded the club in 1891. There are no grave markers or memorials at the burial ground, it is a well-drained location and cars are able to park on the field without damaging the surface.

There were around 150 people in attendance who gathered around the prepared grave. The mourners had been encouraged to dress in bright colours and many of the ladies present did that, but it was a cold day, so everyone was well wrapped up.

The service began with the approach of the funeral bier drawn by a vintage tractor. The coffin was accompanied on the trailer by Mr Fraser's closest relatives. The coffin itself was of a wicker work construction and was immediately lowered into the grave by the pall bearers. The service continued in the pattern of Anglican funerals. There were two tributes from friends, the first relating to Mr Fraser's love and interest in vintage cars and there were around twenty examples of these in a separate area of the car park. The second tribute related to his love of boats and rowing and his association with Marlow rowing club.

The family tribute was read by Revd Gompertz where it was revealed that Mr Fraser attended Birchanger primary school between 1950 and 55 and that he was last pupil entered into the school disciplinary book, by Mr. Bernard Musselwhite, who was club secretary in the 1950s. The service ended with the committal and a final blessing from Revd Gompertz.

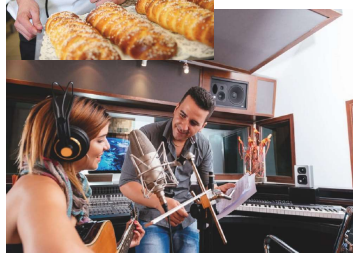
Eddie Gilbey

What Can We do to Help You?



We have a number of youngsters and young adults in the village who have a variety of interests and we would like to encourage them along their chosen paths.

However, before we can do that, we need to hear from you to get ideas.



So, if you are a budding musician, author, poet, crafter, baker or a potter (or anything else) please get in touch with Pam on 07792172744 or email Pam.mark2@btinternet.com

What have you got to lose? Give us a call and let's see what we can do to bring like minded people together!



Tai Chi for Beginners in Birchanger

Are you an older person looking to become more active? Have you ever wondered whether Tai Chi is for you? Have you done Tai Chi in the past and would like to do a refresher? For some time, Cait Goddard has run a weekly Tai Chi class in Birchanger Village Hall CM23 5QJ on Wednesdays from 10.00am to 12.00 midday. In addition, Cait will now be running a beginner's class at the hall every Thursday from March 16th from 9.30 am to 10.30 am. Over 6 months you will learn the foundations of Master Moy's Tai Chi for Health and the first 17 moves. You can then join the Wednesday group and learn the rest of the set.

Tai Chi for Health was developed by Mr Moy Lin Shin. Working in Canada he recognised the need for a secular form of Tai Chi which focussed on the health benefits of regular practice. Described as a moving meditation by Dr. Michael Mosely in his regular 'Just One Thing to Improve Your Health' series. Tai Chi's benefits have been rigorously studied. It is a gentle practice which exercises the mind as much as the body and is very suitable for older people. You do not need any fancy equipment, just comfortable clothing and footwear.

Cait Goddard is an accredited teacher with Essex Tai Chi Academy. She has been teaching this class for four years and regularly attends workshops to maintain her practice. Membership of the Academy entitles you to attend any of the Academy classes. All teachers volunteer their time out of their love of Tai Chi. Fees cover Hall Hire and subsidise training events. A starter cost of £30 for six classes is followed by a quarterly fee of £60.

For more information you can find the Academy on Facebook or on our website www.essextaichiacademy.org. To join Cait's classes please contact her on 07415 628935 or email cait.goddard@virgin.net.

Preventing stolen doorstep deliveries



Here are some things you could do to reduce the risk of doorstep theft:

- Track your parcel to ensure you or someone else is at home for the delivery.
- Install a video doorbell; this can be connected to your mobile so that you are notified immediately of any delivery, and is easier to install than a full CCTV system!
- Install a security light.
- Arrange for your parcel to be delivered to a trusted neighbour, or other family members who will be at home; if you live in a flat, is there a concierge who could accept the parcel for you?
- Use an off-site locker service for frequent deliveries, or for expensive items; these parcel boxes are more likely to be in busy, safer locations - such as supermarkets - rather than secluded areas which could be targeted by thieves.

what's on in the village...



March 2023



Household Bin Collections: Bradley Common collected on Fridays. Rest of Birchanger on Thursdays.

Birchanger Parish Council Meetings: Meets on the first Tuesday of each month at 7.30 pm in the church hall - **Open to the public.**

Mon

Tue

Wed

Thu

Fri

Sat

Sun

Garden Waste Skip 3.00-4.00 pm outside Social Club: Mar 18, Apr 15, May 13, Jun 10, Jul 8, Aug 5, Sep 2 & 30, Oct 28, Nov 25

		1 Church hall: 10.00 Tai Chi 12.45 Takeley Art 14.00 Tea Room 14.00 Fencing 19.00-21.15 Apton Dance	2 Black Bin Church hall: 9.30 Tai Chi 11.00 Line dance 16.45 Ellouise School of Dance BSSC: 20.00 Bingo	3 Church Hall: 09.30 - 10.30 Apton Dance - Private Lessons	4 Church Hall: 09.00 - 13.00 Apton Dance for kids BSSC: 13.00 Meat draw Karaoke Night	5 St Mary's Church: 11.15 am Matins Service BSSC: Sunday Roast
6 Church Hall: 19.00 - 20.00 Apton Dance Latin/Ballroom BSSC: Quiz Night	7 Garden Bin Church hall: 12.00 Tap Dance 16.45 Ballet 18.45 - 21.00 Apton Dance	8 Church hall: 10.00 Tai Chi 12.45 Takeley Art 14.00 Tea Room 14.00 Fencing 19.00-21.15 Apton Dance	9 Green Bin Church hall: 9.30 Tai Chi 11.00 Line dance 16.45 Ellouise School of Dance BSSC: 20.00 Bingo	10 Church Hall: 09.30 - 10.30 Apton Dance - Private Lessons	11 Church Hall: 09.00 - 13.00 Apton Dance for kids BSSC: 13.00 Meat draw 20.30 Living The Dream - Live	12 St Mary's Church: 11.15 Holy Communion Service BSSC: Sunday Roast
13 Church Hall: 19.00 - 20.00 Apton Dance Latin/Ballroom BSSC: Quiz Night	14 Church hall: 12.00 Tap Dance 16.45 Ballet 18.45 - 21.00 Apton Dance	15 Church hall: 10.00 Tai Chi 12.45 Takeley Art 14.00 Tea Room 14.00 Fencing 19.00-21.15 Apton Dance	16 Black Bin Church hall: 9.30 Tai Chi 11.00 Line dance 16.45 Ellouise School of Dance BSSC: 20.00 Bingo	17 Church Hall: 09.30 - 10.30 Apton Dance - Private Lessons	18 Church Hall: 09.00 - 13.00 Apton Dance for kids BSSC: 13.00 Meat draw 20.30 The Trax - Live	19 St Mary's Church: 11.15 Family Service BSSC: Sunday Roast
20 Church Hall: 19.00 - 20.00 Apton Dance Latin/Ballroom BSSC: Quiz Night	21 Garden Bin Church hall: 12.00 Tap Dance 16.45 Ballet 1 18.45 - 21.00 Apton Dance	22 Church hall: 10.00 Tai Chi 12.45 Takeley Art 14.00 Tea Room 14.00 Fencing 19.00-21.15 Apton 20.00 BP Council Annual meeting	23 Green Bin Church hall: 9.30 Tai Chi 11.00 Line dance 16.45 Ellouise School of Dance BSSC: 20.00 Bingo	24 Church Hall: 09.30 - 10.30 Apton Dance - Private Lessons	25 Church Hall: 09.00 - 13.00 Apton Dance for kids BSSC: 13.00 Meat draw 20.00 Josh's Quiz Night	26 St Mary's Church: 11.15 am Holy Communion Service BSSC: Sunday Roast
27 Church Hall: 19.00 - 20.00 Apton Dance Latin/Ballroom BSSC: Quiz Night	28 Church hall: 12.00 Tap Dance 16.45 Ballet 18.45 - 21.00 Apton Dance	29 Church hall: 10.00 Tai Chi 12.45 Takeley Art 14.00 Tea Room 14.00 Fencing 19.00-21.15 Apton Dance 20.00 BAGS	30 Black Bin Church hall: 9.30 Tai Chi 11.00 Line dance 16.45 Ellouise School of Dance BSSC: 20.00 Bingo	31 Church Hall: 09.30 - 10.30 Apton Dance - Private Lessons		



BIRCHANGER SPORTS
AND SOCIAL CLUB

NEWS FROM THE CLUB



You might still be scraping frost from your car and donning your winter coats, but the nights are getting lighter, and the daffodils are starting to appear. That means you'll soon be hearing the sound of leather on willow again in the centre of our village!

Birchanger Cricket Club has been part of the village since 1895 and, as the club starts to prepare for its 128th season, it's looking to expand its membership. Do you, or anyone you know, enjoy a game of cricket? Or perhaps you have always fancied a go but never given it a try. There are winter net sessions on Saturday mornings at 8.30 happening until the middle of April, when practice sessions will move to outside if the weather allows. The club runs two teams with matches on Saturday afternoons, starting at 1:30pm; the season starts in early May.

All abilities are catered for; so if you are complete beginner or a seasoned pro and want to get involved with some local cricket then contact Ross Leavers: ross.bssc@aol.com



OPENING HOURS

Monday:	5-11pm	Kitchen Closed
Tuesday:	5-11pm	Kitchen Closed
Wednesday:	5-11pm	Food: 5-9pm
Thursday:	12-3pm/5-11pm	Food: 12-2pm/5-9pm
Friday:	12-11pm	Food: 12-2pm/5-9pm
Saturday:	12-11pm	Food: 12-9pm
Sunday:	12-8.30pm	Food: 12-3pm

For all general enquiries

Telephone: 01279 813441 Email: club@birchanger.com

Website: www.birchangerclub.com

Follow us on Social Media

For all news and announcements



WHAT'S ON

BIRCHANGER SPORTS
AND SOCIAL CLUB



Sat March 11th

Living The Dream

A photograph of a four-piece band standing in front of a white brick wall. From left to right: a man in a black vest and red tie holding a black electric guitar, a man in a white shirt and grey vest, a man in a black vest and white shirt holding a black electric guitar, and a man in a black shirt and tie holding drumsticks.

Dance The Night Away to
50's, 60's, 70's and Country Classics

BIRCHANGER SPORTS AND SOCIAL CLUB PRESENTS

Josh's QUIZ Night

25th March

8PM START. FREE ENTRY. MUSIC,
PICTURE & WIPEOUT ROUNDS.
PRIZES TO BE WON.

THE TRAX

SATURDAY 18TH MARCH
FROM 9PM

NEW MEMBERS WELCOME

We welcome new members. To join you can either complete the online application or speak to a member of staff at the Club.

For more information visit
www.birchangerclub.com



For all general enquiries

Telephone: 01279 813441 Email: club@birchanger.com
Website: www.birchangerclub.com

Follow us on Social Media
For all news and announcements





Stansted Airport Community Fund

As part of the wider agreement which gave Stansted Airport permission to handle up to 43 million passengers a year, the airport has an obligation to pay a minimum of £150,000 each year for the next 10 years in grants for local good causes. Local is defined as being within 10 miles of the Stansted runway. The annual sum available for grants will increase in line with inflation (CPI) and the fund will also receive all the income from fines imposed on airlines when noise regulations are breached. This could amount to a further £10,000 to £20,000 per annum.

Some will take the view that all of this is small consolation for the additional noise and other negative aspects of airport expansion. However, many local organisations will have an opportunity to benefit and it's important that they should know more about the fund. The fund will make one major award each year of £50,000 and the remaining £100,000+ will be available for community grants of up to £5,000 each. Parish councils, local charities and other not-for-profit organisations are all eligible to apply.

Applications are now being invited for the annual 'Flagship Award' of £50,000. Inevitably this will be extremely competitive and there can only be one successful applicant each year. The deadline for this year's 'Flagship Award' applications closes on 21 April. The Fund Committee will consider the applications in early May and the successful applicant will be notified shortly afterwards.

Applications are also now being invited for Community Grants of up to £5,000. The closing date for the first round of applications is 3 March and the intention is to have four funding rounds each year, i.e., approximately every three months. The first round of Community Grant applications will be considered by the Fund Committee on 23 March and successful applicants will be notified shortly afterwards.

Examples of applications which could be eligible for funding are:

- Projects which would help/support voluntary youth groups, the elderly or disabled.
- Projects which support community life such as improvements to village halls.
- New and/or improved facilities which would be of benefit to local communities.
- Projects that support community arts and/or sporting/leisure activities.
- Environmental/conservation schemes supporting access to the countryside/outdoors.

For more information – go to [London Stansted Airport Community Fund \(smapply.org\)](http://London Stansted Airport Community Fund (smapply.org)) or email community@stanstedairport.com.

Brian Ross (Member of Fund Committee)

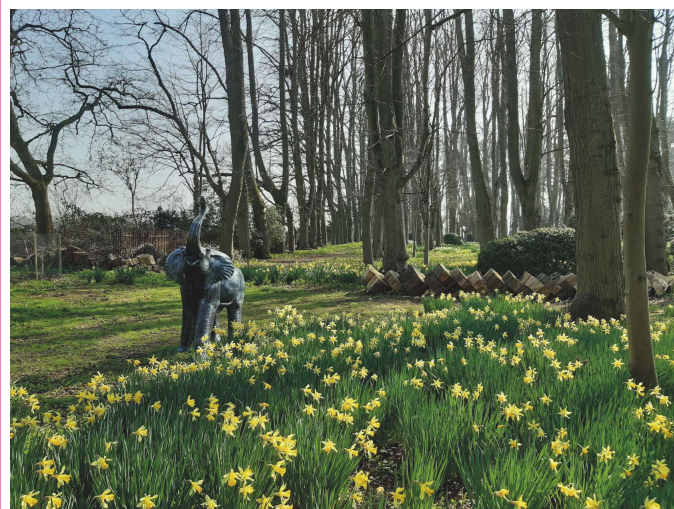
THE FORGOTTEN GARDENS OF EASTON LODGE

News From the Gardens of Easton Lodge

March can be such a lovely month for being outdoors. At the Gardens, the daffodils come out through March, some early, some late and they are usually still in bloom in early April. Group Visits for 10 or more visitors can be booked in for a Thursday, if you wish to visit in March. The Gardens then open on Thursdays for all visitors on 6 April.

There are a huge number of species and varieties of daffodil and many of those in the Gardens were planted in Victorian times and have naturalised in the Bosquet and the Lime Wood. In March, other wildflowers are out too, fresh leaves are opening on shrubs and trees and there is the first blossom on the fruit trees – beautiful pink on the peaches and nectarines that are espaliered on the kitchen garden walls.

There is often real warmth, when the sun shines in the Italian Garden and the Walled Kitchen Garden. So, the bees and some butterflies are starting to get out and about. For gardeners, it is a lovely time for getting borders back into shape; moving and planting perennials; prepping vegetable beds and sowing the first seeds.



As the Gardens renew themselves we also like to welcome new volunteers. We are holding two 'New Volunteer Days' this year on Saturday 11 March and on Thursday 16 March, so there's a weekend and a weekday option! We will show potential new volunteers around the Gardens and for those that wish, there can be a little light work! For more information go to our website:

www.eastonlodge.co.uk/whats-on

Jill Goldsmith

M11 North bound Closure

Junction 7a to Junction 8
Friday 3rd March 8.00 pm to
Monday 6th March 6.00 am
Full weekend closure



The Hundred Parishes Society

The Office for National Statistics (ONS) recently published analysis of the 2021 Census. Nationally, this showed that the population of England grew by 6% in the last 10 years and 14% over the last 20 years. Locally, the increase has been much faster. The population of The Hundred Parishes in 2021 was around 156,000, up 12% since 2011 and 24% since 2001. If roads seem busier, these extra 30,000 people are a major factor.

Half of the increase is accounted for by 6 parishes close to Stansted Airport. Elsenham, Flitch Green, Great Dunmow, Little Canfield, Stansted Mountfitchet and Takeley have each expanded by more than 50% in the last 20 years. The next biggest growth has been in Buntingford: up from 4,300 in 2001 to 7,900.

The Census is the modern equivalent of the Domesday Book produced in 1086 AD when the national population was less than 2 million, compared to 60 million today.

Today, 8% of the Hundred Parishes population was born outside the UK (compared to 17% in the whole of England and Wales); 10% of homes are flats (v 22%); 36% of houses have 4 or more bedrooms (v 21%); 27% of homes are rented (v 37%); 40% of adults work at home (v 31%); 55% are in professional or managerial jobs (v 46%); 56% of households have 2 or more vehicles (v 35%). We have a different age mix to the UK average, with a shortfall of around 5,000 people in their 20s and 30s offset by around 5,000 extra people aged over 40.

While the previous paragraph highlights contrasts, some statistics are closely aligned with the national picture: 99% of households have central heating; 5% of households have a second home; 51% of the population is female and 49% male.

Each parish introduction on www.hundredparishes.org.uk has been updated to include the 2021 population. For more information, please go to <https://www.ons.gov.uk/census>

Ken McDonald, Secretary

IMPORTANT CHANGES

at your recycling centres

From 13 March 2023, bookings will be required to visit an Essex County Council recycling centre in any vehicle.

For full details, visit
loveessex.org/bookings



Essex County Council
Recycling and Waste



U3a Stansted Mountfitchet

We started our first meeting of the new year with our Speaker Peter Maggs regaling us with details of a celebrated murder case nearly 200 years ago in rural Suffolk. At our February Meeting, Dennis Eraut, a local resident, will give a talk entitled 'Medieval Maldon'.

Our First Seminar of the year, held on the 25th February, entitled 'The History of the Conflict Between Ukraine and Russia', was so popular we had to book a larger venue. The second Seminar will take place on April 29th and there will be more news on this subject in our next Newsletter, but it promises to be a thought-provoking session.

The trip to see the Temptations at the Prince Edward Theatre in London on 11th May, I'm afraid to say, has already sold out. A new Geography Group has just started up and there is a proposed 'Strictly Singles' group which we hope will soon be up and running. There are more events on the back burner!

The Gardening Group are still enjoying their meeting even though they haven't had the best weather for gardening. Having had a lecture from Geoff Hodge BSc, MCIHort, in January on the best way to deal with bugs and garden plagues, they took inspiration from their meeting in February visiting Grove Lodge, Saffron Walden, an NGS garden where they saw displays of snowdrops and spring bulbs - minus the slugs!

Do join us at our meeting on 16th March and leave our cold shores by travelling in virtual reality with author Philip Caine from Barrow, through Africa, Kazakhstan and Russia to Iraq and the Gulf States. He is of course the author of a number of adventure thrillers and is a prolific public speaker. Meetings are held at St. John's Hall, Stansted on the 3rd Thursday of the month, from 1.30 pm.

Eileen Quinn - Stanstedu3a@gmail.com

www.u3asites.org.uk/stansted

Tel: 07874 385541

Birchanger Parish Council Annual Meeting

March 22nd at 8.00 pm in the village hall
All are welcome



P. D. Tucker & P. Stapleton

Hazel End Road, Hazel End, Bps Stortford, Herts CM23 1HB

Tel: 01279 813429

Mon-Sat: 12noon - 3pm & 6 - 11pm Sunday: 12noon - 3pm

Village Services and Activities

Alzheimer	Marian	07803 115826
Art Studio & Gallery	Heather Brown	01279 815453
Ballroom Dance	Fred Winters	01763 271942
Ballet for kids	Philippa McMeechan	01763 271010
BAGS	Rosemary Wheatley	01279 814678
Beauty Therapist	Sarah Whiting	07887 638359
Birchanger Magazine	Peter Sampson	07817 904333
Butterflies Preschool	Carly Richards	01279 810800
BSSC Club	Terry Earnshaw	01279 813441
Car Service, MOT, Gas	D. Bonney	01279 813315
Car Service - Mobile	B. K. Autos	07786 461813
Chiropodist	Julie Golden	01279 873492
Dance - Apton Studio	Maxine Williams	07854 251528
Dementia	Debbie Baker	07927 011345
Garden Services	GWB Horticulture	01799 543483
Garden Services	Will Grange	07516 783138
Hairdresser Men/Boys	Emma Marks	07527 227943
Holistic therapy/Reflexology	Shelley Williams	07476 279262
Landscaping Services	Mark Taylor	07941 357934
Launderette	Ian Kennedy	01279 866183
Line Dancing	Shelley	01279 864781
Neighbourhood Watch	Peter Sampson	07817 904333
Painting & Décor	David Debnam	07973 861268
Parish Clerk	Keith Williams	01279 814773
Petals Children's Play	Hana Hainsby	07730 619522
Public Safety	Peter Sampson	07817 904333
Speed Watch	Peter Sampson	07817 904333
St. Mary's Church	Pam Lee	07702 171744
Tai Chi	Cait Goddard	07415 628935
The Three Horseshoes	Paul & Paula	01279 813429
The Three Willows	Mark Boden	01279 815913
Village Church Hall	Cat Roberson	07475 092658

St. Mary's Church



Church services - 11.15 am

5th March	Matins with Jo Pratt
12th March	Holy Communion with Revd Helen Flack
19th March	Family Service with Hugh Mascetti
26th March	Holy Communion with Revd Colin Fairweather

Church News

Hello everyone. It may be still cold outside, but I hope over the past month you have all been snug and warm at home. As I write this article, the sun is shining and spring is showing itself in the small green shoots that are peeping through in the garden and soon splashes of colour will appear as the daffodils and crocuses burst into bloom.

Those of you who have ventured into church will know that the interior is mainly composed of wood. A few months ago, we discovered an infestation of woodworm that was steadily munching its way through some of our pews and the parquet floor. Before we could arrange for the wood to be treated, we had to undertake a bat survey to check what was happening with our colony of bats that were known to live in the church. That survey has been done and we are pleased to be able to report that all is well with the bats – pipistrelles and lesser horseshoes – so on the 25th February all of the accessible wood in church was sprayed to kill off the woodworm. This included the altar floor where the carpet had to be removed and a new carpet, chosen by the congregation, has been laid. We hope you like it.

On the 19th March it is Mothering Sunday, a day when traditionally children come to church with their mothers, to give thanks to God for all mothers, wherever they may be. This is a Family Service and is very child friendly so, if you can, please come along and join us. On Sunday the 7th May at 2.00 pm we will be hosting Afternoon Tea in the Church Hall to commemorate the Coronation of King Charles. There will be delicious sandwiches, cakes and mini treats suitable for all ages – adults £10, children £5. We are also organising a Mini Prize Bingo. Advanced bookings are now being taken so please let Pam (contact details below) know if you want to come along. All profits will go to charity. Suggestions so far are for Pet Rescue, hospice and MS but you can also put forward your own suggestion.

Please do not forget that every Wednesday afternoon between 2.00 pm and 4.00 pm the tearoom is open with a delicious array of homemade cakes for your delight. All profits go to support the hall and church. Over the coming months we shall be doing some fundraising for the church and hall including a quiz night on the 24th June and Prize Bingo on the 30th September. Please put these dates in your diary now. It's our Annual Parochial Parish Council meeting on the 23rd April when we shall be reviewing all that has happened in church during the past year and making plans for this year. There are vacancies on the Parochial Church Council and if you would like to become involved, please let us know as soon as possible.

Future Events

19th March	Mothering Sunday Service
7th April	12.00 midday - Prayers at the Cross
30th April	6.00 pm - Silent Communion
2nd May	Coffee Morning at Moorswood

Prayer for the Month

Eternal God, whose Son went amongst the crowds and brought healing with His touch, bring healing and love into this world and our lives so that all will be transformed.
Amen

Pam Lee (Church Warden)
Tel: 07702 171744
pam.mark2@btinternet.com



Village Church Hall

Modern hall, superb kitchen and additional meeting room available for hire



Tearoom open every Wednesday from 2.00 pm

For bookings or further information please contact:

Manager: Cat Roberson

Telephone: 07475 092 658

Email: birchangerhall@gmail.com

Village Church Hall



For information and bookings contact:

Manager: Cat Roberson

Telephone: 07475 092658

Email: birchangerhall@gmail.com

THE THREE WILLOWS

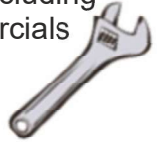


Fine dining, takeaway & good beers. Children and dogs welcome. Bookings: 01279 815913
Monday to Thursday: 12 to 3pm & 5 to 11pm
Fri/Sat: 12 to 11pm Sunday: 12 to 7pm

B.K.AUTO'S

Fully Qualified And Insured
Mobile Mechanic

Located within Birchanger,
all makes and models serviced
and repaired, including
4x4 & commercials



Contact: Ben
07786461813

D. Bonney & Sons



Motor
Engineers

MOT Testing - Servicing - Diagnostic
Mechanical Repairs
Selection of New and Used Cars

Yew Tree Corner, Manuden
Ring Malc or Niel on
01279 813315 or 01279 815946

State Registered Chiropodist

Mrs. Julie Golden S.R.Ch.

Home Visiting Practice

Est 1994
Tel: 01279 873492
Mob: 07916075451
Dunmow Road
Takeley CM22 6SH

Painting & Decorating



Bring new life to
your home
Interior - Exterior
General
Maintenance
No job too small

David Debnam
Tel: 01279 815214 Mob: 07973861268

GRANGE GROUNDS MAINTENANCE

Grass Cutting
Hedge Cutting
Weeding
Planting
Patio Cleaning
Tree Works



Call Will on: 07516783138

SUDS Launderette

WASH & IRON SERVICE
CLOTHES - BEDDING - DUVETS

Opening Times
Mon - Fri 9.00 am - 6.00 pm
Sat - Sun 9.00 am - 6.00 pm

Hockerill Lights, Bishop's Stortford
Large car park at rear
Tel: 01279 866183

m mediacomms

Aerial Satellite AV Security

- Aerial Installations
- Sky Installations & Subscriptions
- CCTV & Security Alarms
- Freesat Installations & Receivers
- Audio Visual Installations
- Multiroom Music & TV Distribution
- Wireless & Wired Networks
- TV Wall Mounting Services
- Family Run Business



01279 656 983 - 0800 587 2556

Unit 1, Suite 1 Peak Business Centre, Woodside Industrial Estate, Bishops Stortford CM23 5RG

Wireless Security Intruder alarms



Intruder alarms have never been so
simple to install,
operate, maintain and clean.

Mediacoms uses the latest
technology to keep you & your
property secure.

YOUR HOME AND COMMERCIAL SECURITY INSTALLER
ALARMS CCTV DOOR ENTRY GATE AUTOMATION

www.mediacomms.co.uk

info@mediacomms.co.uk



Perfectly Pampered

Complementary & Holistic Therapies
By Shelley Williams MGHT

07476 279262

Birchanger CM23 5QT

The natural approach to the wellbeing of
women, focusing on relaxation, improving
sleep, relieving stress, fatigue and anxiety
through reflexology, facial and body massage
therapies.

MGHT Accredited & Insured



Friendly, Professional & Reliable
Sustainable Garden Services Provider
Gardening, Landscapes & Tree Works

Tel: 01799 543483 Mob: 07866 752713

One off Garden Tidies	Regular Garden Maintenance
Hard & Soft Landscaping	Tree Pruning, Felling & Reductions
Hedge Cutting & Trimming	Fencing & Timber Structures
Advice & Planning	Traditional Countryside Crafts
Planting and Plant Sourcing	Leaf & Snow Clearance
Log Splitter & Operator Hire	Soil, Log & Aggregate Delivery
Chipper & Operator Hire	

Free No Obligation Quotes
www.gwbhorticulture.co.uk

The Birchanger Village Magazine is published on behalf of the people of Birchanger and distributed free to 450 households in Birchanger. The views expressed herein do not necessarily reflect those of the editor, the magazine or any organisations or institutions represented. Material sent to the editor will generally be printed as received providing it is considered suitable by the magazine team. The editor reserves the right to edit content if considered unsuitable or where insufficient space is available. All material should be submitted by the 16th of the month to be published the following month.

Printers: Keeley & Lowe Tel: 020 7729 3350 - Email: info@keeleylowe.com

Editor: Peter Sampson Tel: 0781 7904333 Email: magazine@birchanger.com

Chairman: Elizabeth Godwin.

Treasurer: Ken Wheatley.