



# Birchanger Village Magazine

September 2021

Issue 224



## Can We Trust Uttlesford District Council With The Local Plan?

What is a Local Plan? A Local Plan is a strategic master plan for a district that decides where all the new houses and jobs should be created. It also says what infrastructure, such as roads and schools, is required to support them. The Local Plan is required to cover at least 15 years and the government requires each planning authority (in our case Uttlesford District Council) to have one that is up to date.

The Planning Inspector found the 2019 draft Uttlesford Local Plan unsound after the first stage of the formal examination. It is therefore up to the current council to re-submit a workable plan.



Without a Local Plan housing developers have more free rein over where they want to build new homes which means they may get built in unsustainable locations in our towns and villages.

Anyone looking at the proposals emerging from the call for sites in the local plan would wonder at the extreme bias towards the A120/ Bishop's Stortford end of the district in the latest attempt by UDC to get the plan right.

This is a potential nightmare for our local area, as the proposals suggest building housing on green belt land around Birchanger Stansted and Bishop's Stortford which would create overcrowding, increased traffic on already overloaded roads, more chaos at Junction 8 and the loss of the rural aspect of the district much valued by those who live here.

In previous years, Uttlesford District Council has tried to limit development here on the grounds that residents simply do not want any further development in a much loved rural environment. However, due to the poorly written 2019 plan, developers are having a field day.

After last month's fiasco with the barn development in Birchanger, and the lengthy travellers saga, residents cannot be blamed if they are losing confidence in the district council's ability to cope. We have been here before. This call for sites is almost identical to the call for sites for the previous, now defunct, local plan. All were refused. That however is no guarantee as to how they will act this time round!

We shall have to wait until the end of the year to discover our fate. Previously, the district council had declared their intent to protect the green belt. Will that declaration stand? Or was it not worth the paper it was written on?

## Birchanger Comes Out of Lockdown

Birchanger came back from lockdown last month. The school children managed to have their outings, albeit in a reduced form. The club held a beer festival with a barbecue. The tearoom reopened at the church hall and some of the regular classes returned. There were party bookings back at the pub, which was packed out at weekends with a good trade throughout the fine days during the week.

The recreation ground was full of families on most days. Lots of people walked the footpaths. The inevitable motor cross bikes returned but they got short shrift from Birchanger's Community Special Constable. The village came back to life. The Airport noise came back! The litter on the road came back as well.



But there is a difference. Most people still wear masks as they enter the pub or club. Food and drink can now be ordered at the bar but people are still cautious in their approach to others. Many prefer to eat outdoors and avoid crowded places. A lot of us still prefer to shop online. Even so, for some people, liberation has not yet arrived.

Unfortunately, there are a few people whose vaccinations have not provided the immunity that the majority of us enjoy. Tests have shown that they have little if any antibody response. Some live in Birchanger and they will need to take special care as for the moment, there is no solution for this small group.

For sure, the virus has not gone away and maybe it never will. It seems that the coronavirus jab will be something we have to live with in future, as indeed we do each year with the flu jab.



# Editors Letter Box

*Dear Ed,*

## **A Run for Your Money - A Charitable Event!**

My name is Bethan and I have been a resident of Birchanger village for the past 6 or 7 years. During the first lockdown I decided to take up running and found a real peace and tranquillity in the beautiful woods and pathways around the village and surrounding areas. This really helped me stay positive when life seemed to just stand still. As I ran, I began to consider how I could push myself further and the rather crazy thought ran (pardon the pun!) into my head about training for a marathon; something I had always wanted to do. Of course, I also needed to consider what or for whom I would run!

What cause is so close to my heart that could make me want to do such a thing? Well, I attend the Baptist church in Bishops Stortford, and their goal is to be a strong bridge of support to people across the area. It just took a covid lockdown for me to decide what I wanted to do and how I could help support this project. I would run a marathon!



How will the church reach its goals I hear you ask? Well, the church has purchased a building adjacent to the main church building which will serve as the 'Bridge', and has the facilities to support those in need in the local community. Please take a look at the YouTube video online which will explain all about the project. Just type into your browser search engine: 'YouTube the bridge bsbc' to find the video.

If you would like to support this amazing project, please go to [www.justgiving.com](http://www.justgiving.com) and write BSBC in the search section.

All donations big or small will be very much appreciated. Thank you so much!

*Bethan Buck*

*Dear Ed,*

## **Memorial Cricket Match Raised £2000 For Cancer Research**

The memorial cricket match for our son James took place on Saturday 14th August and, for once, the weather was kind to us and the whole day went very well. There was a large turnout of both cricketers and spectators, and the family would like to take this opportunity to thank all those who helped make the occasion such a heart-warming celebration of his life.

It is impossible to name everyone individually but we must mention Ross Leavers and the cricket club for organising the match, all those who provided vast amounts of food to feed the players (and many of the spectators), Jay Leavers for the wonderful barbecue after the game, the 3 Willows and the Social Club for donating meals plus everyone else who contributed a huge range of prizes for the raffle, and finally all those who bought raffle tickets and made cash donations.

At the time of writing this letter money is still being collected and counted so the grand total raised for Cancer Research is not yet known, but we are hopeful of reaching around £2000 and I will let everyone know the total figure next month.

Once again, a huge heartfelt thank you to everyone for helping to make it such a memorable day, and to know that James was held in such affection by so many has been a great comfort to all his family.

*Bryan & Gloria Reed*

Don't forget, your magazine is only as good as the content it receives, so please keep sending me your news, views, notices, concerns and complaints. Advertisers are also welcome. All copy should be submitted by the 16<sup>th</sup> of the month, preferably sooner and may be edited depending on space and content. Please contact me by E-mail, phone, or letter as shown below. Thank you and Kind Regards,

Join us on Facebook: [www.facebook.com/birchanger/](http://www.facebook.com/birchanger/)

*Peter Sampson*



[magazine@birchanger.com](mailto:magazine@birchanger.com)



07817 904333



2 Harrisons, Birchanger

# VILLAGE NEWS

By Elizabeth Godwin

## Do You Need A Covid Pass

You may well be asked to present your covid pass proving that you have been inoculated with two jabs for entry to many events and locations, especially the larger, more crowded ones. You can get a digital version which lasts for 30 days by using the NHS App or NHS website. You can download it as a PDF or get it sent to you in an email. Or, you can apply for hard copy certificate which has a longer validation date. You will need your NHS number and you can either apply online at NHS.UK or by ringing NHS on 119. It is well worth getting. Mine is, although I am not planning on going to a night club right now. Remember, cases are at the time of writing still on the rise and even vaccinated people can be unlucky enough to catch covid, it has happened here in Birchanger!

## Not Long to the Big Light Up!

It may seem rather early to mention this, but summer holidays are just about over and at the end of the Autumn Term, Christmas will be upon us. Last year's light up was fantastic. Despite a difficult year with covid, Birchanger had never looked so good. It would be great if we could make this happen all over again. This year, the light up will be at the club at 7.00 pm on Friday December 3<sup>rd</sup>. Because people are often very busy on Christmas Eve, the results will be announced in the club at 9.00 pm on Friday December 17<sup>th</sup>. Both occasions are special, and unique to Birchanger, so we hope to see you there.

## Some Pitfalls in Shopping Online

The trouble with shopping online is that while it may be convenient and easy, some of us are discovering the pitfalls of shopping online the hard way. It is amazing just how many people make a major purchase online from an unknown website. They hand over high amounts of cash through an unprotected transfer then sit and wait for an item which never arrives. The chance of getting their money back is almost zero.

There are things you can do to protect yourself from these online fraudsters. First of all, try and see the goods before entering into any purchase agreement and buy from a reputable and trusted source. Test drive a car before you even consider making an offer. Try to pay by credit card so that the sale has some protection if something goes wrong. If you are the seller, beware bogus bank transfers. Never let your item go until the bank confirms that the

money is in your account. Better still, insist on cash or an instant payment service. Take charge at every stage of any transaction and talk to the bank or payment service via a number you trust and have sourced for yourself. It is a hard world out there and a lot of people have not only lost their cash but their items as well.

## Scamming From a Number Like Yours

This is one of the tricks that the scammers have tried to use a lot in the past few weeks. The first four digits of the caller ID appear to mirror yours exactly. Except of course, in reality, they don't at all. The scammers appear to be from an enforcement agency representing well known government organisations. Victims are invited to speak to an "advisor" about their totally fictitious unpaid fines and police warrants which of course the victim knows absolutely nothing about.

This scam also appears on well-known messaging apps like WhatsApp. The first thing to be aware of is that government agencies will never use these apps, neither do they use texts so anything in this form has to be a scam. Always take five before responding to anything you may receive which is suspicious. Report it on 7726 for free or at [www.actionfraud.police.uk/report-phishing](http://www.actionfraud.police.uk/report-phishing) before you do anything.

## New Beginnings in September

With the start of the new school year, it often feels like a new year for everyone, especially in households with children. For older people, the end of the summer often heralds a time for change. Another new beginning. Maybe even part time foster care for a special needs child. There are many different types of foster care. People who might want to dip in and dip out of this could opt in for a few weeks at a time, while others might prefer a longer option. It is difficult to find carers especially during the pandemic, but the needs of the children don't change. Appropriate fees are paid depending on the level of care.

Carers with a child with complex needs could expect to be paid between £500-£1000 per week according to the severity of the child's disability. Fostering can be just a respite over one weekend or full-time foster care with rates paid according to the amount of care provided and to any disability that a child may have. This might be something you could do. Finding out does not mean obligation. Go online to [FosterRecruitment@Essex.gov.uk](mailto:FosterRecruitment@Essex.gov.uk), or phone 0800 801 530. Regular information on fostering sessions take place all year round over Essex.

## Birchanger All Girls Society

The 'BAGS' welcome women of all ages to join them on the last Wednesday of every month in the village hall.

**The next meeting will be on September 29th  
for wine and cheese tasting 7.30 for 8.00  
For further details telephone:**

**Olivia: 07568 574703**

**Rosemary: 01279 814678**



**ANOTHER LEVEL  
CONSTRUCTION Ltd**  
Don't just build .....create!

- New Build
- Extensions
- Conversions
- Renovations
- Roofing
- Brickwork
- Plastering
- And more



TELEPHONE 01279 814 273 MOBILE 07710 099 284

[info@anotherlevelconstruction.co.uk](mailto:info@anotherlevelconstruction.co.uk)

[www.anotherlevelconstruction.co.uk](http://www.anotherlevelconstruction.co.uk)





### Community Grant Time Again

Many well-known Birchanger organisations have benefited from the Uttlesford Community Grant Scheme including the village hall and the recreation ground, to name but two. This year the grants are available to parish councils, village halls, community organisations, recreation grounds, clubs, nursery groups and all manner of initiatives which benefit the community. There must be people in Birchanger whose organisation or project would benefit for a grant which range from £100 to £3,500. Visit the Uttlesford website for criteria and details of how to apply, or call the council directly on 01799 510510

### Recycling is Not Always Easy

I was left staring at piles of stuff nobody will ever use again. I did not know that even poor wood can be recycled, you just have to find the timber recycling space at the tip and the lot can go in there. That part is easy, but windows and door frames seem to be a lot harder to dispose of. You are allowed just one disposal of a door or window frame in three months as an ordinary individual. Recycling larger items is not easy and when recycling centres restrict the kind of rubbish they accept, it can end up in fields, ditches, or farms. In Birchanger, we are tired of people dumping their rubbish in Tot Lane. The district council is certainly aware of the problems in Tot Lane, but the rubbish still keeps coming. Maybe everyone just has to pay a bit more to achieve the sort of recycling residents want. There are still too many items which find themselves dumped due to the difficulties of trying to dispose of them.

### Got an Unwanted Laptop

If you have, your local library is the place to take it and you can be sure it will be put to good use. Essex County Council knows that there are many families who are struggling without a laptop of their own. If there are children in the household this makes it even more difficult as so much schoolwork involves the use of a computer at home. Your laptop will have all data thoroughly erased before it is redistributed, although you might like to do that yourself before handing it into the library at Stansted. You can also hand it in to our mobile library on its three weekly stops in Birchanger. There is a family out there who will be incredibly grateful for your now redundant laptop.

### Watch Out There's a Speed Camera About

Police have been handing out tickets recently to a large number of drivers in villages all over Essex, some of whom were caught doing 48 mph in a 30-mph limit! There are cameras being used in Birchanger too, controlled by our own Community Special Constable, Sergeant Halls. It seems that now covid restrictions have been eased, they really do mean to have a war with those who speed!





**Emma Marks**  
Men and Boy's Haircuts

99 Birchanger Lane  
Birchanger  
Herts CM23 5QF

TELEPHONE  
07527 227943

### Can You Afford to Die?

Lack of transparency by funeral directors has led to people paying more than they need to for their own or a relative's funeral. Very few funeral directors ever list the cost of each item in the package. In a state of grief families do not ask, but funerals can cost thousands and take years to pay off. Funerals are costly, but they don't need to be that costly. Families are incredibly stressed when trying to organise a funeral, but they should not be ripped off as well.

There is a movement to try and make funeral directors to be more transparent as to the real cost of their services, but until this has the backing of the law behind it, try and discover what you are really buying. A new code is due out this month, but it is not a given that all funeral directors will actually abide by it.

### Securing Your House

Beware of rogue locksmiths. They may advertise on TV, in local papers, or online claiming to cover the country. They will say that they are DBS checked but may be vague about their prices on the phone. They may be reluctant to give a firm quote or give details of their accreditation. Police are aware of these rogue traders and although they will not recommend a locksmith, they advise you to use one which is MLA approved. A genuine locksmith will happily give you details of his accreditation. The phoney ones will sound plausible, but they are potentially dangerous.

### Don't Lose Out to the Ticket Touts

At this time of year many of us are planning and buying tickets for outings to concerts, theatres, pantomimes, and Christmas shows. Whatever you do, make sure you buy from a reliable ticket sale website. Many people have lost money in the past few months to fraudsters who set up all manner of plausible sites which sent out realistic looking tickets which proved to be total phoneys when presented at the venues. Ignore the so called fantastic low-cost deals sites and buy from 'The Box Office', which is the official promoter for London events, or another well-known reputable ticket agency. If possible, don't pay for your tickets by bank transfer. You have more chance of getting your money back by using your credit card or Pay Pal. Remember if it says it is too good to be true it probably is and beware unsolicited emails or ads offering incredibly low deals on upcoming Christmas Events.

### What Are Essex County Highways Up To?

The quickest way to find out is to look at the Essex County Highways website. If you have spotted a highway issue this is the place to report it in the first instance. Essex County Council uses Facebook for updates on roadworks and major projects. You can see these on the Essex Highways information map. We are about to come into the colder seasons when frost, salt and ice produce more potholes. Essex County Council has a policy of quick fixing potholes with tarmac with a full repair later which may include resurfacing. We do seem to have to wait a long time to get our potholes fixed in Birchanger and some have hung around for months. Essex is also in the process of replacing all the bulbs on its roads with the more efficient new LED lights. 45,000 have already been installed, only 82,000 to go!



**Taylor Landscapes**  
Landscapes For Living

07941357934

mark.taylor@taylorsvc.net

@TaylorLandscapesLtd





With the relaxation of Covid rules, members of Stansted U3A enjoyed their first meeting in July celebrating with afternoon tea and mountains of cake. Alan Haines entertained us with his 'Baby Boomers Nostalgia Show' and Oh Boy! did we enjoy remembering the music and shows of the 50's and 60's.

Jeremy Batch at our first seminar gave a most exhilarating talk on The History of Navigation from 2000BC beginning with the Byzantines and continuing through the Greeks, the Polynesians, the Vikings and on to modern times, illustrated with slides and diagrams detailing the use of the various instruments of the times.

The Art Appreciation Group spent an interesting afternoon at the Henry Moore Study Centre visiting the magnificent sculptures there and hope to see more at the next get together at the Gibberd Garden.



Tony Wellings, who has led us on so many country walks over the last years is retiring as leader of the Walking and Nature Appreciation Group. Tony's extensive knowledge has always made our walks so interesting. As a gesture of

appreciation, the walkers presented him with a patio rose and a carved stag antler handle walking stick.

Some of us also had another extremely interesting walk around Stansted with historian Kate Birkbeck giving us the background to the history of the great families who have lived in Stansted, finishing at St Mary's Church and cemetery at the grave of one of the heroes of the Zulu Wars who fought at Rourkes Drift.

The next meeting takes place on September 16th. If you are not already a member please come along and meet us and hopefully you will enjoy the meeting and decide to join. Look us up online at

[www.u3asites.org.uk/stansted/home](http://www.u3asites.org.uk/stansted/home)

Eileen Quinn

## Do Not Dump Your Waste at the Village Allotments!

In the August edition of this magazine, under the heading 'St Mary's Churchyard', it was suggested that compostable waste could be placed in a bin on the village allotments. This however is incorrect. The parish Council and Allotment Association agree that due to the possibility of health issues, the inevitable smell, attraction to rats and vandalism, it is not a suitable area for dumping compostable waste.

Residents of Birchanger must use their own bins for any food, household, or garden waste and if necessary, take it to the recycling centre in Bishop's Stortford.

## Coffee Morning at Moorswood



**Tuesday September 21st - 10.30 am to noon**

After a very long absence, the Coffee Morning is back at Moorswood, 330 Birchanger Lane. As always, everyone is welcome to join. Come and meet your friends again. See you then. *Elizabeth Godwin*



**Family Prize  
Bingo**

**Saturday 25<sup>th</sup>  
September**

**Birchanger Village Church Hall**

Eyes down 7.00 pm

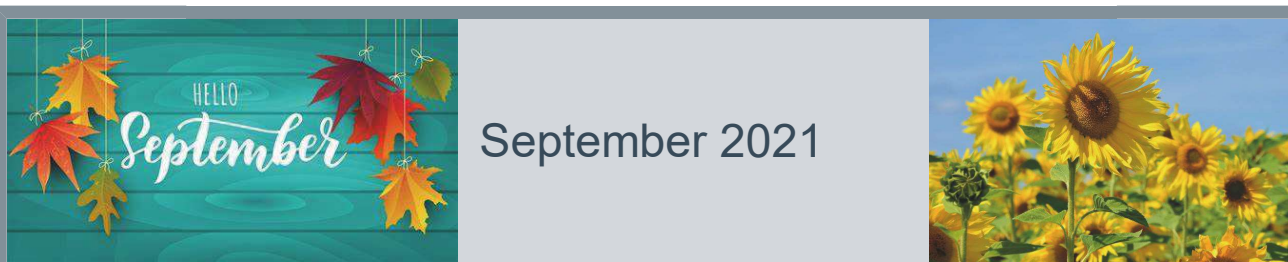
£10 per adult £5 per child

Includes ploughman's supper

Bookings through Pam Lee

07702171744

# What's on in the village...



**Bin Collections:** Bradley Common collected on Fridays. Rest of Birchanger on Thursdays. **Garden bin collections marked with #**

**Birchanger Parish Council Meetings:** Meets on the first Tuesday of each month at 7.30 pm in the church hall - **Open to the public.**

Mon

Tue

Wed

Thu

Fri

Sat

Sun

**Garden Waste Collection Mobile Skip** outside Social Club 2.30 - 3.30 pm: 18<sup>th</sup> Sep, 16<sup>th</sup> Oct, 13<sup>th</sup> Nov.

		<b>1</b> <b>Church hall:</b> 10.00 Tai Chi 14.00 Tea Room 14.00 Fencing 18.00 Apton Dance Studio	<b>2</b> <b>Black Bin #</b> <b>Church hall:</b> 11.00 Line dance 18.30 Apton Dance Studio <b>BSSC:</b> 20.00 Bingo	<b>3</b>	<b>4</b> <b>Church Hall:</b> 09.00 Apton Dance Studio <b>BSSC:</b> 13.00 Meat draw	<b>5</b> <b>St Mary's Church:</b> 11.15 am Matins <b>BSSC:</b> Sunday Roast
<b>6</b> <b>BSSC:</b> Quiz Night	<b>7</b> <b>Church hall:</b> 12.00 Tap Dance 16.45 Ballet 18.30 Apton Dance Studio	<b>8</b> <b>Church hall:</b> 10.00 Tai Chi 14.00 Tea Room 14.00 Fencing 18.00 Apton Dance Studio	<b>9</b> <b>Green Bin</b> <b>Church hall:</b> 11.00 Line dance 18.30 Apton Dance Studio <b>BSSC:</b> 20.00 Bingo	<b>10</b>	<b>11</b> <b>Church Hall:</b> 09.00 Apton Dance Studio <b>BSSC:</b> 13.00 Meat draw 20.00 Me & Him - Live duo	<b>12</b> <b>St Mary's Church:</b> 11.15 Communion <b>BSSC:</b> Sunday Roast
<b>13</b> <b>BSSC:</b> Quiz Night	<b>14</b> <b>Church hall:</b> 12.00 Tap Dance 16.45 Ballet 18.30 Apton Dance Studio	<b>15</b> <b>Church hall:</b> 10.00 Tai Chi 14.00 Tea Room 14.00 Fencing 18.00 Apton Dance Studio	<b>16</b> <b>Black Bin #</b> <b>Church hall:</b> 11.00 Line dance 18.30 Apton Dance Studio <b>BSSC:</b> 20.00 Bingo	<b>17</b>	<b>18</b> <b>Church Hall:</b> 09.00 Apton Dance Studio <b>BSSC:</b> 13.00 Meat draw 14.30 Garden waste Collection	<b>19</b> <b>St Mary's Church:</b> 11.15 Family Service <b>BSSC:</b> Sunday Roast
<b>20</b> <b>BSSC:</b> Quiz Night	<b>21</b> <b>Church hall:</b> 12.00 Tap Dance 16.45 Ballet 18.30 Apton Dance Studio <b>Moorswood:</b> 10.30 Coffee Morning	<b>22</b> <b>Church hall:</b> 10.00 Tai Chi 14.00 Tea Room 14.00 Fencing 18.00 Apton Dance Studio	<b>23</b> <b>Green Bin</b> <b>Church hall:</b> 11.00 Line Dance 18.30 Apton Dance Studio <b>BSSC:</b> 20.00 Bingo	<b>24</b>	<b>25</b> <b>Church Hall:</b> 09.00 Apton Dance Studio 19.00 Family Bingo <b>BSSC:</b> 13.00 Meat draw	<b>26</b> <b>St Mary's Church:</b> 11.15 am communion & Harvest Festival <b>BSSC:</b> Sunday Roast
<b>27</b> <b>BSSC:</b> Quiz Night	<b>28</b> <b>Church hall:</b> 12.00 Tap Dance 16.45 Ballet 18.30 Apton Dance Studio	<b>29</b> <b>Church hall:</b> 10.00 Tai Chi 14.00 Tea Room 14.00 Fencing 18.00 Apton Dance Studio 19.30 <b>BAGS</b>	<b>30</b> <b>Black Bin #</b> <b>Church hall:</b> 11.00 Line Dance 18.30 Apton Dance Studio <b>BSSC:</b> 20.00 Bingo			





## BIRCHANGER SPORTS AND SOCIAL CLUB

# NEWS FROM THE CLUB

### Normality seems to be returning!

We had a wonderful Beer Festival despite the weather and good fun was had by the visitors who attended. This also marked the return to live entertainment and we had several acts over the weekend.

Goat Patrol performed on the weekend of James Reed's Memorial Cricket Match – we had a wonderful turnout to remember and celebrate the life of James – we would like to thank everyone who attended and their generous donations on the day which will be going to Cancer Research.

At time of writing the next memorial is yet to take place but we hope this will also be a day to remember also as we celebrate the life of Paul Harris.

August also marked the return of our Bingo – Eyes down on Thursday evenings.

Don't forget our regular – Quiz night on Mondays and the Meat Raffle on Saturdays – Along with all Live Sports – including The Ryder Cup, England's Test Series with India and of course the Football.

We also have our new play equipment – come and check it out.

In September we have Me & Him to entertain us on 11<sup>th</sup> September 2021 – so get ready for a party!

Please also look out for the AGM date – this will be confirmed soon.

We also have new membership cards so please call in to collect yours if you haven't already!



### NEW MEMBERS WELCOME

We welcome new members. To join you can either complete the online application or speak to a member of staff at the Club.

For more information visit  
[www.birchangerclub.com](http://www.birchangerclub.com)



### NEW MIDWEEK SPECIAL MENU

#### MAINS

Scampi & Chips  
Fish & Chips  
Bangers & Mash  
Sausage and Chips  
6 Bean Chilli  
4oz Burger & Chips

#### DESSERTS

Alabama Chocolate Fudge Cake  
Trio of Ice Cream  
Followed by Tea or Coffee

**£7.95**

### OPENING HOURS

Monday	5-11pm	Kitchen Closed
Tuesday	5-11pm	Kitchen Closed
Wednesday	12-3pm/5-11pm	Food 12-2pm/5-9pm
Thursday	12-3pm/5-11pm	Food 12-2pm/5-9pm
Friday	12-11pm	Food 12-2pm/5-9pm
Saturday	12-11pm	Food 12-9pm
Sunday	12-11pm	Food 12-3pm

### For all general enquiries

Telephone 01279 813441 Email: [club@birchanger.com](mailto:club@birchanger.com)  
Website [www.birchangerclub.com](http://www.birchangerclub.com)

Follow us on Social Media  
For all news and announcements

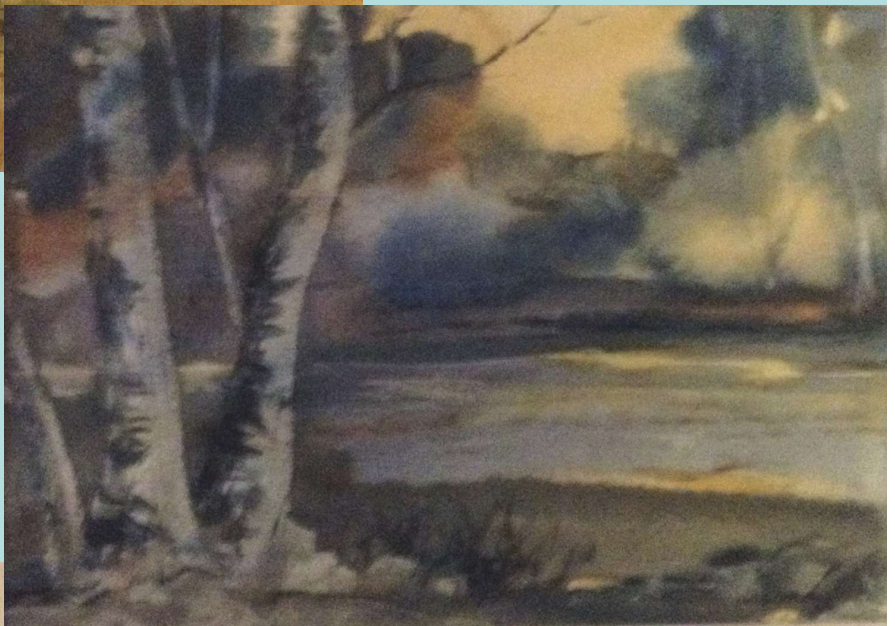
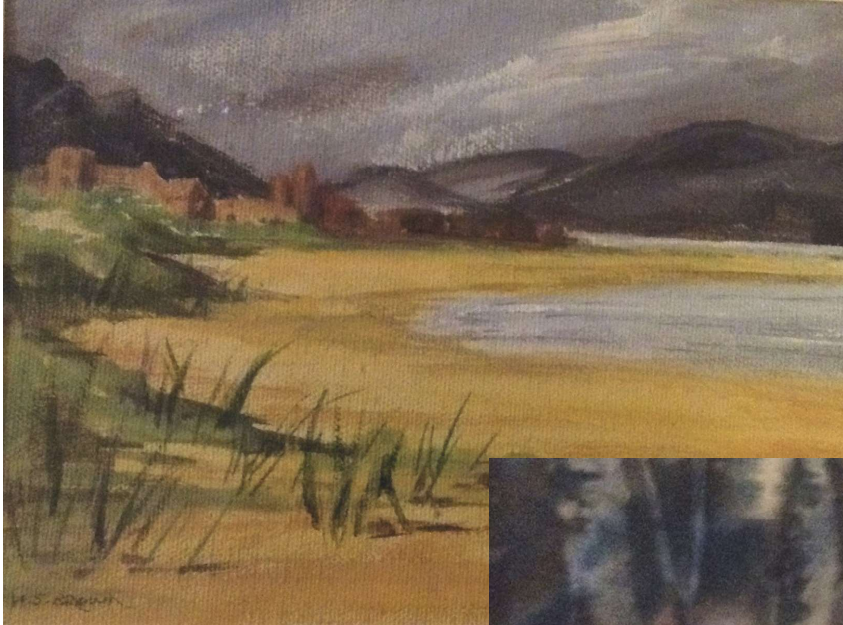




# Original Artwork Offered in Exchange for Charity Donations

Well known artist, Heather Brown, is currently sorting out her art studio and needs help shifting some of her drawings and paintings. They are all originals, mounted but not framed. There are also a number of bespoke greetings cards that have accumulated over the years and need to go.

*For Wood Green Animal Charity*



Weather permitting, Heather will display her artwork under the porch of her home at 6 Wood Lane, Birchanger (down the side of the club) and which you are free to browse. If you choose to take an item, please place your donation in the envelope provided and post it through her letterbox. All donations will go to Wood Green Animal Charity.





## Give Greenwash the Red Light 'Continued'

It may not be surprising to learn that Ryanair is just as guilty of greenwashing as Stansted Airport (as reported in last month's edition of Birchanger Magazine) and, when it comes to the tricks of the trade, Ryanair boss, Michael O'Leary, could have written the book.

In a 2019 advertising campaign Ryanair claimed to be "Europe's Lowest Emissions Airline" and to have "low CO<sub>2</sub> emissions". However, in that same year Ryanair was responsible for emissions of 10.5 million tonnes of CO<sub>2</sub> and was ranked 7th on the European Commission's league table of Europe's top 10 polluters. Ryanair was in fact the only airline on the list.

It didn't take long before the Advertising Standards Authority (ASA) stepped in and banned this Ryanair advertising campaign. The ASA also ordered Ryanair to ensure that if making any environmental claims in future, it had adequate evidence to substantiate them and to ensure that the basis of its claims was made clear.

Undeterred, Ryanair then began offering passengers the opportunity to "donate" £1 to offset their CO<sub>2</sub> emissions by planting trees. One of Ryanair's pledges was to re-forest 18 acres of woodland in Ireland but the scheme was abandoned before a single tree was planted when it was shown that this would offset less than 0.01% of Ryanair's emissions.

Professor Simon Lewis of University College London said the airline would have to plant trees covering 12% of the UK to offset its carbon footprint. He described Ryanair's proposals as "a green gimmick rather than a serious attempt to slow down climate change".

Stansted Airport Watch Chairman, Brian Ross, commented: "Mr O'Leary needs to realise that climate change is far too serious an issue for the facts to be manipulated by clever PR.

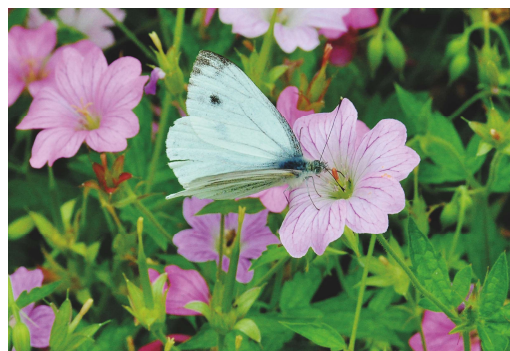
It would be far more meaningful for airlines to accept that it's time to end the international exemption on aircraft fuel duty which dates back to the 1944 Chicago Convention. The 2021 COP Summit in Glasgow provides an opportunity to do this."

*Brian Ross*

## THE FORGOTTEN GARDENS OF EASTON LODGE

Hasn't the summer been up and down? Heat wave, thunderstorms, and cool weather in between. Visitors have taken their chance and enjoyed the Gardens' sunshine or cloud; the sun has brought out the butterflies and there is always shade under the trees to provide relief. On darker days, the colours of the flowers really shine out and lift the spirits. We are now very much hoping for an Indian Summer, for our Apple and Bees Day on 19<sup>th</sup> September and our final Sunday Open Day on 17 October.

We have been picking fruit and jamming, ready for our Apple Day. It was a good year for currants, but as ever we were not the only ones wanting the fruit...the birds and squirrels took their pick too, despite the netting! It should be a big raspberry and mulberry year too.



On the Apple and Bees Day on 19<sup>th</sup> September we will be joined by local beekeepers,

'The East of England Apples and Orchards Project' and 'The Friends of Cressing Temple'. A local woodturner will be demonstrating his craft and local coppicers will explain the importance of their work in our native woodlands. Bishop's Stortford Ukelele Society will tonk out their toons again at the Gardens for the first time since 2019!

We very much hope we will be able to return to the full range of activities that we offered before the pandemic, with crafts for children, apple, honey and produce tastings, as well as apple juicing. We will of course keep this under review in the lead up to the event. What is certain, is that we will provide excellent bacon, cheese, or hummus rolls, homemade cakes, and hot and cold drinks.

Tickets will be available for the Open Day obtainable through the Gardens website:

[www.eastonlodge.co.uk](http://www.eastonlodge.co.uk) or our Facebook page, or direct from Trybooking.com. On the day, after 1.00pm visitors may arrive and pay at the gate. Advance tickets are not required for the more limited offer on Open Thursdays 11.00-3.00 pm. For details see our website.

*Jill Goldsmith*





## The Hundred Parishes Society

Hedges have long been a significant feature of our landscapes. They reduce erosion and offer shelter and forage for livestock and wildlife. Over the centuries, nuts, berries, and herbs from the hedgerows have provided food and natural remedies too. Woody material cut from pollarded hedgerow such as ash, elm and oak trees was once used as fuel or turned into useful objects.

Hedges go back a long way: Roman farmers favoured a living hedge to mark out boundaries. Their value was recognised in the 1567 guidance from the court at Felsted: "Any persons breaking any hedge or stealing wood would be put next Sunday or holiday in the stocks for 2 hours at the least".



Field-edge footpath beside hedgerow

50% of hedges have been lost since the late 1940s as farmers enlarged fields so bigger machines could operate, with the occasional forlorn oak tree as a faint reminder of a lost hedge. The former layout of hedges in any parish can be seen in 19th century tithe maps; comparison with current aerial maps will demonstrate what has been lost. The consequent loss of habitat is often blamed for reduction in species and biodiversity.



Gatekeeper butterfly on blackberry bush

Today, hedges are again valued as wildlife corridors and as a way to lock up carbon. There are encouraging signs of new hedgerow planting, for example in Saffron Walden and beside the B1051 between Broxted and Thaxted.



Fallow Deer

This summer, blackberry blossom has been much in evidence in the hedgerows so Autumn walkers may be in for a treat. Look out also for sloes that can be turned into delicious sloe gin. Many of our footpaths follow field edges beside hedgerows.



Blackberries



Sloes, apples and rose hips in a hedgerow

If you are not yet familiar with the Society's walk routes, please download one from our website – there are many to choose from and they range from 1 mile upwards.  
*Tricia Moxey, Trustee*



## The Three Horseshoes

P. D. Tucker & P. Stapleton

Hazel End Road, Hazel End, Bps Stortford, Herts CM23 1HB

Tel: 01279 813429

Mon-Sat: 12noon - 3pm & 6 - 11pm

Sunday: 12noon - 3pm



## Village Services and Activities

Alzheimer	Marian	07803 115826
Art Studio & Gallery	Heather Brown	01279 815453
Art Studio & Gallery	Brian Gough	01279 815012
Ballroom Dance	Fred Winters	01763 271942
Ballet for kids	Philippa McMeechan	01763 271010
BAGS	Rosemary Wheatley	01279 814678
Beauty Therapist	Sarah Whiting	07887 638359
Birchanger Magazine	Peter Sampson	07817 904333
Birchanger Voices	Tony Wilson	01279 813007
Birchanger Nursery	Karen Reilly	01279 810800
Bird Food	Lesley Robins	01279 812248
Builders - Another Level	Matt Marks	01279 814273
BSSC Club	Steve Hopkins	01279 813441
Car Service	D. Bonney	01279 813315
Chiropodist	Julie Golden	01279 873492
Dance - Apton Studio	Maxine Williams	07854 251528
Dementia	Debbie Baker	07927 011345
Garden Services	GWB Horticulture	01799 543483
Hairdresser Men/Boys	Emma Marks	07527 227943
Holistic therapy/Reflexology	Shelley Williams	07476 279262
Landscaping Services	Mark Taylor	07941 357934
Laundrette	Ian Kennedy	01279 866183
Line Dancing	Shelley	01279 864781
Neighbourhood Watch	Peter Sampson	07817 904333
Over 60's club	Jean Camp	07843 707249
Painting & Décor	David Debnam	07973 861268
Parish Clerk	Keith Williams	01279 814773
Petals Children's Play	Hana Hainsby	07730 619522
Police Special	Martin Halls	<a href="mailto:Martin.Halls@essex.police.uk">Martin.Halls@essex.police.uk</a>
Public Safety	Peter Sampson	07817 904333
Speed Watch	Peter Sampson	07817 904333
St. Mary's Church	Pam Lee	07702 171744
Tai Chi	Cait Goddard	07415 628935
The Three Horseshoes	Paul & Paula	01279 813429
The Three Willows	Mark Boden	01279 815913
Village Church Hall	Cat Roberson	07827 685741

## St. Mary's Church



### Church Services Sunday 11.15 AM

September 5 <sup>th</sup>	Matins with Pam Lee
September 12 <sup>th</sup>	Communion with Revd Helen
September 19 <sup>th</sup>	Family Service with Hugh
September 26 <sup>th</sup>	Communion with Revd Colin

## Church News

Hello everyone. We hope that you are all well and enjoying the easing of restrictions as we try to get back to some sort of normality. Certainly we are glad that at last we are permitted to sing in church again. There is nothing like the uplifting feeling that comes from singing a well loved familiar hymn.

Here in the church Revd Colin and his team have begun to introduce some new ideas that we hope will be of interest to you. Come along to one of his services and meet him. You can also meet up with him in the Social Club as Colin has become a member. You cannot miss him in his clerical gear and if you do see Colin, please make the effort to welcome him into the community. He really does want to get to know the village and the people that live here. At the moment he is putting together information about the benefice churches for a new website and we will provide further details as soon as we can.

Looking forward, we are putting together a schedule of fundraising events that are suitable for the whole family. At this moment, we shall be hosting the following:

- 21st September at 10.30am Coffee Morning at Moorswood
- 25th September at 7pm Prize Bingo in the Church Hall
- 26th September at 11.15am Harvest Festival Service
- 27th November at 1pm Lunch in the Church Hall
- 7th December at 10.30am Christmas Coffee Morning
- 17th December at 7pm Christmas Carols in Church
- 19th December at 11.15am Christingles in Church

You are, of course, welcome to join us at any of these events or Sunday services. Just turn up, introduce yourself and join in. The more the merrier - as they say!

## Prayer for the Month

Lord, as we go about our daily lives  
 Let your hand guide us on the troublesome pathways  
 Let the Holy Spirit surround us and shelter us from the  
 storms that rage  
 Each and every day may we experience your peace

**Amen**

Pam Lee (Church Warden)  
 Tel: 07702 171744  
[pam.mark2@btinternet.com](mailto:pam.mark2@btinternet.com)



## Village Church Hall

**Modern hall, superb kitchen and additional meeting room available for hire**



**Tearoom open every Wednesday from 2.00 pm**

For bookings or further information please contact:

**Manager:** Cat Roberson

**Telephone:** 07827685741

**Email:** [birchangerhall@gmail.com](mailto:birchangerhall@gmail.com)

## Village Church Hall



For information and bookings contact:

Manager: Cat Roberson

Telephone: 07827685741

Email: [birchangerhall@gmail.com](mailto:birchangerhall@gmail.com)

## THE THREE WILLOWS



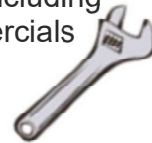
Fine dining & good beers. Children and dogs welcome. Bookings: 01279 815913  
Monday to Friday: 12 to 3pm & 5 to 11pm  
Saturday: 12 to 11pm Sunday: 12 to 6pm

## B.K.AUTO'S

Fully Qualified And Insured  
Mobile Mechanic

Located within Birchanger  
All makes and models serviced  
and repaired, including  
4x4 & commercials

Contact: Ben  
07786461813



## D. Bonney & Sons



Motor  
Engineers

MOT Testing - Servicing - Diagnostic  
Mechanical Repairs  
Selection of New and Used Cars

Yew Tree Corner, Manuden  
Ring Malc or Niel on  
01279 813315 or 01279 815946

## State Registered Chiropodist

Mrs. Julie Golden S.R.Ch.

Home Visiting Practice

Est 1994  
Tel: 01279 873492  
Mob: 07916075451  
Dunmow Road  
Takeley CM22 6SH

A

## Painting & Decorating



Bring new life to  
your home  
Interior - Exterior  
General  
Maintenance  
No job too small

David Debnam  
Tel: 01279 815214 Mob: 07973861268

## ROMAN CATHOLIC CHURCH

St. Therese of Lisieux  
High Lane, Stansted CM24 8LQ

[www.sttheresasstansted.org](http://www.sttheresasstansted.org)  
<https://www.facebook.com/StTheresaStansted>

Priest Father Lee Bennett  
Tel: 01279 814349  
Email:  
[frleebennett@dioceseofbrentwood.org](mailto:frleebennett@dioceseofbrentwood.org)



WASH & IRON SERVICE  
CLOTHES  
BEDDING  
DUVETS

Open 7 days a week 10.00 am - 3.00 pm  
Hockerill Lights, Bishop's Stortford  
Large car park at rear  
Tel: 01279 866183



## Aerial Satellite AV Security

- Aerial Installations
- Sky Installations & Subscriptions
- CCTV & Security Alarms
- Freesat Installations & Receivers
- Audio Visual Installations
- Multiroom Music & TV Distribution
- Wireless & Wired Networks
- TV Wall Mounting Services
- Family Run Business



01279 656 983 - 0800 587 2556

Unit 1, Suite 1 Peak Business Centre, Woodside Industrial Estate, Bishops Stortford CM23 5RG

## Wireless Security



Intruder alarms have never been so  
simple to install,  
operate, maintain and clean.

Mediacoms uses the latest  
technology to keep you & your  
property secure.

YOUR HOME AND COMMERCIAL SECURITY INSTALLER  
ALARMS CCTV DOOR ENTRY GATE AUTOMATION

[www.mediacomms.co.uk](http://www.mediacomms.co.uk)

[info@mediacomms.co.uk](mailto:info@mediacomms.co.uk)



## Perfectly Pampered

Complementary & Holistic Therapies  
By Shelley Williams MGHT

07476 279262

Birchanger CM23 5QT

The natural approach to the wellbeing of  
women, focusing on relaxation, improving  
sleep, relieving stress, fatigue and anxiety  
through reflexology, facial and body massage  
therapies.

MGHT Accredited & Insured



Friendly, Professional & Reliable  
Sustainable Garden Services Provider  
Gardening, Landscapes & Tree Works

Tel: 01799 543483 Mob: 07866 752713

One off Garden Tidies	Regular Garden Maintenance
Hard & Soft Landscaping	Tree Pruning, Felling & Reductions
Hedge Cutting & Trimming	Fencing & Timber Structures
Advice & Planning	Traditional Countryside Crafts
Planting and Plant Sourcing	Leaf & Snow Clearance
Log Splitter & Operator Hire	Soil, Log & Aggregate Delivery
Chipper & Operator Hire	

Free No Obligation Quotes  
[www.gwbhorticulture.co.uk](http://www.gwbhorticulture.co.uk)

The Birchanger Village Magazine is published on behalf of the people of Birchanger and distributed free to 450 households in Birchanger. The views expressed herein do not necessarily reflect those of the editor, the magazine or any organisations or institutions represented. Material sent to the editor will generally be printed as received providing it is considered suitable by the magazine team. The editor reserves the right to edit content if considered unsuitable or where insufficient space is available. All material should be submitted by the 16th of the month to be published the following month.

Printers: Keeley & Lowe Tel: 020 7729 3350 - Email: [info@keeleylowe.com](mailto:info@keeleylowe.com)

Editor: Peter Sampson Tel: 0781 7904333 Email: [magazine@birchanger.com](mailto:magazine@birchanger.com)

Chairman: Elizabeth Godwin.

Treasurer: Ken Wheatley.