



# Birchanger Village Magazine

March 2020

Issue 206



## VE Day arrangements are on the way!



Yes as always, Birchanger does what it does best – it has formed another committee! This time it is for the 75<sup>th</sup> year anniversary of VE Day. It's all hands on deck and already the committee has started putting their ideas into action. Birchanger Sports & Social Club (BSSC) will host the event which promises to be a fun packed day for adults and children alike! The date is fixed for the VE day bank holiday on Friday 8<sup>th</sup> May and will be celebrated all over the UK. It aims to start around lunchtime and go through to midnight.

Fund raising has already reached £1,500 including £300 pledged by three BSSC club members. Generous donations have been received from Birchanger Parish Council, the District Council, and the BSSC club. However, more funds are needed to cover the costs. To this end, a fund raising bucket or two will be placed in the clubhouse in the hope that club members and villagers will put their hands in their pockets and give generously. All money left over after costs will be distributed evenly to the charities 'Help for Heroes' and the 'Poppy Appeal'.

During the day, there will be a garden party for the kids including food and an ice cream van. Games will include a sack race, egg and spoon race, tug of war and a poster competition. For adults, there is a full line up of entertainment including professional 1940's singing group the 'Hotsie Totsies', Tom Carradine and a Karaoke. 1940's videos and music will be played throughout the day and guess what, everyone including the kids are invited to come dressed in 1940's costume or military dress!

If you would like to help in some way, either before or on the day, or would like to sponsor a prize for the raffle, please contact Evan Hill on 07751 628678 or email [evanhill@hotmail.co.uk](mailto:evanhill@hotmail.co.uk). It promises to be a memorable day!

## 12 caught speeding in Birchanger



Community Special Constable Martin Halls and his colleague Tom were out and about in Birchanger Lane recently carrying out speed checks. No fewer than ten warnings were issued to drivers found to be travelling over the speed limit of 30 miles per hour. It is interesting to note that virtually all the offenders happened to reside in Birchanger! Last month, only warnings were handed out but next time, Martin will be handing out tickets and fines.

One driver was found to have no insurance and was dealt with accordingly. Apart from traffic control, Martin has also been patrolling Birchanger Woods, checking on the incidents of stone throwing / catapult shooting at vehicles travelling on the A120 Bishops Stortford bypass. A suspect has since been arrested. In addition, a number of offences have been recorded around the village and the woods over the last couple of months, including offences of drug use.

Birchanger Community Speed Watch were also out in Birchanger Lane during February, carrying out speed checks and two drivers have been reported to Essex Police for breaking the speed limit. One was recorded at 37 mph and the other at 39 mph. Both drivers will be receiving a warning letter from the police.

Speeders, you have been warned, speeding checks will continue for the foreseeable future, so if you are caught, you have no one else to blame but yourself!



# Editors Letter Box

*Dear Readers,*

## **Birchanger Parish Council meetings open to the public**

Did you know that Birchanger Parish Council meets once per month and that the meetings are open to the public? Apart from discussing the safety and general running of the village, the council members discuss important subjects such as: local planning permission, concerns about the airport and the travellers' site, public spending and budgets, maintenance of the playing field and the play equipment as well as the pathways and allotments etc., etc. County and district councillors often join the meetings and report on the wider subjects of Uttlesford and Essex that could affect the village.

The parish council meets on the first Tuesday of every month in the annexe of the village church hall at 7.30pm, so why not join them? Simply listen in, or have your say if you wish. Each member of the public is allowed three minutes to talk to the council. The council will hold their annual parish meeting on Wednesday 18<sup>th</sup> March in the village hall at 8.00 pm and again, all villagers are welcome.

## **Community Special Constable**

I have received a number of enquiries about our new Community Special Constable (CSC) and how to contact him.

Martin Halls is our local Community Special Constable. However, under normal circumstances and according to Police procedure, you are not allowed to contact a CSC police officer directly. You should report any crime or suspicious behaviour to 101 or in emergency 999. Alternatively, you can also report a crime, suspicious behaviour or vandalism etc., by going onto the Essex Police website <https://www.essex.police.uk/> and click on 'Rapport'. By reporting a crime in this way, you ensure that all reports are entered into the police data base for coordination across the county.

If you have a general question you can contact Martin by email at [Martin.Halls@essex.police.uk](mailto:Martin.Halls@essex.police.uk). You also have a chance to meet Martin on the 18<sup>th</sup> March at the annual Parish council meeting held at the church hall starting at 8.00pm.

## Letters to the Editor

*Dear Ed,*

### **Helping a Neighbour**

Living in this lovely small community I believe that over the last few weeks most of us have enjoyed all the Christmas festivities and are looking forward to a happy, peaceful year ahead. However, there are some families here that have really fallen on hard times and are in need of our help. There are even some who cannot provide themselves with regular meals and in this day and age, I find that shocking.

I have always thought that food banks are a great practical way to help others and had assumed that items placed in the containers outside supermarkets in Bishop's Stortford were distributed to local residents including those living in our village. I am now told that these items go to the food bank in Harlow, the closest food bank to Birchanger where food vouchers can be used. To get to the food bank in Harlow from here, using public transport, costs over £7 and then having received your food parcel, you have to pay to get back home. What a waste of resources.

There is a voluntary food bank at St John's church in Stansted but nothing nearer than that and it is a long way to walk from Birchanger to Stansted when you are cold and hungry. Even worse if you have young children in tow.

Over Christmas a number of people living here were generous enough to donate essential food items to help a neighbour who was struggling and many have subsequently expressed the desire to continue to help by making regular donations. A few people have offered to help and one resident has been kind enough to offer storage room. So now I am asking residents to donate food items, particularly those that have long shelf lives like tea, coffee, long life milk, cereals, rice, pasta, tins of beans/vegetables/meats/fruits, washing products including toothpaste, sugar etc. At this point I cannot store anything that needs refrigeration. You can deliver items to me at 4 Harrisons or at the Wednesday tea room in the church hall or at church on Sunday mornings or call me and I will arrange collection.

For those of you that already offered to help, please let me know if you are willing to be named with your addresses being disclosed as drop off points. I do feel that the more participants that we have, the better the chances of this venture being successful. Finally, if you know of a family in this village that really needs a helping hand, please let me know or get them to contact me direct; I will do what I can to assist. *Pam Lee 07702171744*



[magazine@birchanger.com](mailto:magazine@birchanger.com)



01279 813193



2 Harrisons, Birchanger

# VILLAGE NEWS

*By Elizabeth Godwin*

**Public Annual Parish Council Meeting Wednesday 18<sup>th</sup> March**  
Birchanger's Annual Parish Council Meeting will take place in the village church hall on Wednesday 18<sup>th</sup> at 8.00 pm. It is your opportunity to discover what is happening in Birchanger and how it might affect you. Hear an update on the airport expansion and ask questions. The evening will end with a cup of tea or coffee and a chance to meet members of the Parish Council and our local Community Special Constable, Martin Halls.

## **Birchanger Art Show is Back This Year**

Having missed a year for technical reasons, the Birchanger Art Show will be back in Birchanger for the last week in September for two days on the 26<sup>th</sup> and 27<sup>th</sup> September. The problems have been solved and the artists are looking forward to exhibiting their work once again.

It seems that many people have missed the Art Show and that includes the artists who make the weekend possible and hopefully sell their pictures as well. The high standard will be maintained as all the artists' work is well known to the organisers and pictures are submitted by invitation. Birchanger School also takes part with their own special exhibition where every child takes part.

The Art Show has raised funds for many Birchanger groups and projects throughout the years. Many visitors return every year and they are not just from Birchanger. The show relies entirely on volunteers to make it work. Many of these are needed on the Friday before the show to set up as well as to man the show and to help in the tea room. We also need strong men on the Friday. The very popular art show tea room will need lots of cakes, sausage rolls and other tea time delights and for all of this we rely on the help of the village. If you think you could help in any way, no matter how small, please contact me on 812793. There will be a BBQ meeting later in the summer where everyone who has offered their help can meet and find out more about the role which will suit them best.

## **Do You Own A Dog?**

You are probably aware of the dog bins placed at strategic points for dog walkers throughout the village. Please be aware that these bins are for DOG WALKERS ONLY and not for people to dump their weekly dog mess from home. The Parish Council simply cannot afford to provide receptacles for dog owners throughout the

village to dump all their dog mess. And why should they when the District Council permits all dog owners to use their own black bins for their dog mess? Why push the council tax up further by making the Parish Council pay for additional bins when the solution is on your own doorstep? Why walk or even drive to a bin when the receptacle is in your own back yard? Also, if you find the dog walker bin already full, please take your poo home with you and put it in your own black bin. I don't understand why some dog owners just don't seem to get the message!

Please also note! The waste bins in the playground/recreation field are not for dog mess! We do not have professional crews to empty this. The situation may be remedied soon with an additional dog bin, but until then please take your dog mess home. Thank you.

## **The Latest Scam**

This one purports to be from the Inland Revenue and can arrive by email, letter, or by phone. It looks suitably official with a figure saying that you are owed a tax refund going back two years and that they have repeatedly written to you to invite you to claim. It comes with an imposing looking headline and identification number, (but not the right one) and an invitation to reply or to hit a key in order to start your claim. Many would be fooled by it and assume that the previous reminders were lost in the post.

This is not how the Inland Revenue works. If money is owed to you, they will refund the money either by post or transfer it directly into your bank account. You will not be invited to claim it. The only contact you will receive from the revenue is a letter containing a cheque. If you answer the scam, you will start something which will cost far more than the few hundred pounds offered.

## **A Military Tradition, Sawdust Hearts**

During the First World War soldiers recovering from life changing injuries were given small hearts to decorate in whatever way they chose. Each heart was stuffed with sawdust. It was the start of occupational therapy as it is known today. As part of the end of the World War 1 commemorations, groups across the UK have been decorating similar hearts to remember those soldiers and to create a stunning display which toured the country. Some of these hearts are now on display at Saffron Walden Museum. Exhibitions at the museum are constantly changing and even the youngest children are catered for. There is also a shop with items which would make great gifts and some to compliment the current exhibitions.

## **Birchanger All Girls Society**

The 'BAGS' invite women of all ages to join them on the last Wednesday of every month in the village church hall

### **Forthcoming Meetings:**

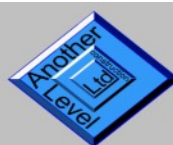
**Wednesday 25<sup>th</sup> March 2020 7.15 pm**

**Bowling at Ace of Lanes - meet at the village hall 7.15 pm**

Telephone for details

Olivia: 07568 574703

Rosemary: 01279 814678



**ANOTHER LEVEL**  
**CONSTRUCTION Ltd**  
Don't just build .....create!

- New Build
- Extensions
- Conversions
- Renovations
- Roofing
- Brickwork
- Plastering
- And more



TELEPHONE 01279 814 273 MOBILE 07710 099 284

[info@anotherlevelconstruction.co.uk](mailto:info@anotherlevelconstruction.co.uk)

[www.anotherlevelconstruction.co.uk](http://www.anotherlevelconstruction.co.uk)





## Remember Children Who Need Homes

While most children in Birchanger grow up normally supported by their parents and family, there are still too many children out there who urgently need a home. Being in care is not easy for many, especially for those who have had a very rocky start in life. Almost inevitably these children find themselves in care and there are so many children in urgent need of a home out there.

For many children their time in care is spent in a council children's home. Staff do their best but what these children want and dream of is a stable family. Somewhere to call home with people they can trust. Sadly there are not a lot of people available to provide this, perhaps because in general people don't know what is involved. Many people with children at school or older people with spare bedrooms have contemplated fostering but have never actually done anything about it.

If you have considered fostering but have no idea how to even start finding out about it, one way can be by attending an information morning. The next one nearest to Birchanger will be held at Chelmsford County Cricket Ground on Saturday March 14<sup>th</sup> between 11.00 am and 1.00 pm. Alternatively call 0800 801 530 or look on line at [www.essexadoptionandfostering.co.uk](http://www.essexadoptionandfostering.co.uk).

## Time Outdoors with the Family

Most parents know the tensions that can build at the end of the winter when the weather outside has made it difficult to even contemplate spending time outdoors. However, with the clocks going forward at the end of the month, bringing longer evenings accompanied hopefully by warmer weather, it is perhaps time to contemplate a few family outings, even if it is just a walk to the woods.

Getting outside has been shown to be good for the entire family. Outings can provide the opportunity for families to actually talk to each other, to relax, play a few games together to release the tensions which can arise inside the home. Memories are made on these occasions, which simply don't happen on a night at home in front of the television or the children on their mobiles or laptops in their rooms. A successful day out has proved to bring benefits to everyone, so start planning yours now.



## Restaurant Review - Cafe Masala Bishops Stortford

This Indian Restaurant has been in business for many years. Recently there have been many changes following a period of closure.

Parking is easy in the car park directly behind the restaurant, situated next to Suds on the London Road. The layout has not changed fundamentally but the menu certainly has. Although you can have old favourites such as Chicken Tikka Masala there are a huge variety of dishes which you are unlikely to have tried before. Some of the dishes are hot and spicy but the chefs are willing to make your curry to the strength which is right for you. It was quite busy and my curry was different, possibly slightly too hot for my taste, but that can be remedied and I will return. There is a lot to try on that menu.

## Time to Get Fit Again

Soon the warm weather will be here, but our bodies are probably nothing like ready for shedding our clothes. Many of us have too many pounds to shed first. It may seem too chilly still for outdoor exercise, but there are still things you can try indoors while watching television which will help. Try a bit of fast jogging on the spot during commercial breaks. You have plenty of time to relax in between. If you have the space you could try skipping, definitely not recommended for small areas! As is another alternative, the hula hoop, but most of us could find space for an exercise bike, even a rowing machine or exercise ball if we could find the inclination.

Can't be bothered with any of the above? Try gentle weight lifting which can be an ideal indoor exercise and can be done sitting down. You could also make yourself more active by getting up to change the TV channels manually, and ditch the snacks. The program might be so good you don't realise that you actually finished the packet.

## New Physical Damage Trail Discovered in Schizophrenics

For a very long time now psychiatrists have searched all over the body to try to find physical abnormalities in mental illness. A recent breakthrough has discovered the existence of abnormalities in certain connective tissues where lower levels of vital proteins were discovered. This was consistent in the group suffering from schizophrenia. This breakthrough is important as once any abnormality is discovered, a treatment path can be eventually established. Schizophrenia has ruined so many lives and not just the lives of the sufferers. If this particular mental illness can be nailed, the quality of life will improve for thousands.

## Live Well Link Well

Live Well Link Well is free and confidential support of a non-medical nature. We can help you with:

- Healthy living
- Quitting smoking
- Physical and mental wellbeing
- Independent living
- Mobility and equipment
- Home adaptations
- Safety and security
- Looking after someone
- Social inclusion
- Getting out and about
- Money worries



## How do I access the support?

If you are aged over 18 and live in Essex (excludes Southend and Thurrock) you can contact us.

T: 0300 303 9988 (Monday to Friday from 8am – 7pm)

E: [livewell.linkwell@nhs.net](mailto:livewell.linkwell@nhs.net)

If you are a Health or Social Care professional who wants to refer someone, please use the contact details above.



## Emma Marks Men and Boy's Haircuts

Tel: 01279 814273  
Mob: 07527227943

99 Birchanger Lane,  
Birchanger,  
Herts.  
CM23 5QF

## TAYLOR PROPERTY SERVICES



FENCING  
BOUNDARY HEDGE PLANTING  
EXTERNAL PROPERTY MAINTENANCE  
GUTTERING  
LANDSCAPING  
PATIOS AND DRIVEWAYS  
GARDEN CLEARANCE  
FLINT WALL REPAIRS

[mark.taylor@taylorsvcs.net](mailto:mark.taylor@taylorsvcs.net)  
[taylorpropertysvcs.com](http://taylorpropertysvcs.com)  
07941 357934



## 'Nextdoor' Privacy concerns

If you haven't yet, you may soon be contacted by a neighbour and prompted to join this social network.

'Nextdoor' is a profit making social media company whose revenue comes from advertising. Members in

the UK have recently voiced concerns over their privacy.



Nextdoor have the following mission statement:

"Our purpose is to cultivate a kinder world where everyone has a neighbourhood they can rely on. Our mission is to be the neighbourhood hub for trusted connections and the exchange of helpful information, goods, and services. We want all neighbours to feel welcome, safe, and respected when using Nextdoor".

They go on to say "All members of Nextdoor use their real name and verify their address. The conversation always stays private, just between you and your neighbours". However, if you post a message to nearby neighbourhoods, your name, neighbourhood name, and photo will be shared. Nearby neighbours will not see any detailed profile information unless you explicitly allow it. It is not possible to remain completely anonymous when posting to Nearby Neighbourhoods".

In 2017, Nextdoor acquired the UK local social network service 'Streetlife' in a "multimillion pound deal". Members of 'Streetlife' received an email informing them of the Nextdoor acquisition, telling them that Streetlife would be closed down in two weeks. Allegedly, no clear explanation of the difference between the two companies was provided in the notification.

However, members were quite shocked to see a directory of the full names and addresses of people in their new Nextdoor neighbourhoods! Some felt that this new level of visibility had not been made clear - and indeed according to a life member there was no clear explanation of this vital difference between the two networks. Ex member Tony Sutton said: "I switched to Nextdoor and instantly closed my account as my full address was shown without telling me before I signed up." Others thought the publication of this information had put people at more risk of identity theft, although Nextdoor stress that user details are available only within your neighbour network, and - unlike Streetlife - any discussions are not searchable via Google or other search engines on the wider web.

The service Nextdoor offer has some similarities to non-profit making Neighbourhood Watch (NhW) and of the private Birchanger Residents facebook page. However, NhW does not share any personal details and complies totally with the Data Protection Act and current privacy guidance. So think carefully before signing up to Nextdoor, as your privacy could be at risk. *Peter Sampson*

# Dig This!



Do you...

Like getting your hands dirty?

Love fresh fruit and vegetables?

Prefer to be outside rather than in?

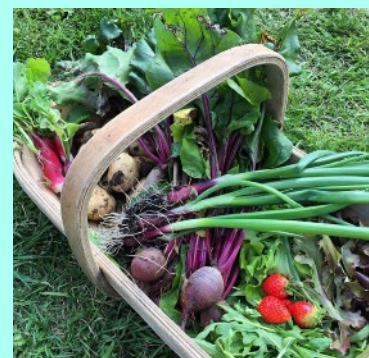
**THEN YOU NEED AN ALLOTMENT!**

Come and join us on the Birchanger allotments for all the above and more. What can be more satisfying than growing your own fruit and veg and staying fit at the same time?

We are a friendly mixed bunch, from young to 'older' and families with children who love to help and get muddy.

If you are interested in a plot or want to find out more please contact Zoe on 07903 925681

# And Do This!





# What's on in the village...

		March 2020				
Mon	Tue	Wed	Thu	Fri	Sat	Sun
<b>Bin Collections:</b> Bradley Common collected on Fridays. Rest of Birchanger on Thursdays. <b>Garden bin collections marked with #</b>						
<b>Birchanger Parish Council Meetings:</b> Meets on the first Tuesday of each month at 7.30 pm in the church hall - <b>Open to the public.</b>						
<b>30</b> <b>Church hall:</b> 11.00 Petal Senses 19.30 Adult Ballroom and Latin Dance <b>BSSC:</b> 21.00 Quiz Night	<b>31</b> <b>Church hall:</b> 13.00 Petals Baby Yoga 15.55 Ballet 3-4yrs 16.30 Ballet 5-7yrs 18.30 Apton Dance	<div style="border: 1px solid black; padding: 5px;"> <b>Temporary Traffic Regulation Order of Birchanger Lane, Duckend Lane, Birchanger</b>            There is an intended closure of Birchanger Lane / Duckend Lane, due to commence on 27th March 2020 for 6 days. The closure is required for the safety of the public and workforce while Essex County Council undertakes pre patching for surface dressing.         </div>			<b>1</b> <b>St Mary's Church:</b> 11.15 am Mattins <b>Church Hall:</b> 12.00 Birchanger Litter Pickers Volunteers	
<b>2</b> <b>Church hall:</b> 11.00 Petal Senses 19.30 Adult Ballroom and Latin Dance <b>BSSC:</b> 21.00 Quiz Night	<b>3</b> <b>Church hall:</b> 13.00 Petals Baby Yoga 15.55 Ballet 3-4yrs 16.30 Ballet 5-7yrs 18.30 Apton Dance	<b>4</b> <b>Church hall:</b> 10.00 Tai Chi 14.00 Tea Room 15.45 Fencing 18.30 Apton Dance	<b>5</b> <span style="background-color: green; color: black;">Green Bin#</span> <b>Church hall:</b> 10.00 Alzheimer's 12.30 Line dance 13.45 Line dance 18.30 Apton dance <b>BSSC:</b> 20.00 Bingo	<b>6</b> <b>Church hall:</b> 9.30 Baby Glows for toddlers <b>BSSC:</b> Bottle Draw	<b>7</b> <b>Church Hall:</b> 9.00 Dance for Kids <b>BSSC:</b> 13.00 Meat draw 16.45 Six Nations Eng v Wales	<b>8</b> <b>St Mary's Church:</b> 11.15 Holy Communion
<b>9</b> <b>Church hall:</b> 11.00 Petal Senses 19.30 Adult Ballroom and Latin <b>BSSC:</b> 21.00 Quiz Night	<b>10</b> <b>Church hall:</b> 13.00 Petals Baby Yoga 15.55 Ballet 3-4yrs 16.30 Ballet 5-7yrs 18.30 Apton Dance	<b>11</b> <b>Church hall:</b> 10.00 Tai Chi 14.00 Tea Room 15.45 Fencing 18.30 Apton Dance	<b>12</b> <span style="background-color: black; color: white;">Black Bin</span> <b>Church hall:</b> 10.00 Alzheimer's 12.30 Line dance 13.45 Line dance 18.30 Apton dance <b>BSSC:</b> 20.00 Bingo	<b>13</b> <b>Church hall:</b> 9.30 Baby Glows for toddlers <b>BSSC:</b> 50/50 Win or lose	<b>14</b> <b>Church Hall:</b> 9.00 Dance for Kids <b>BSSC:</b> 13.00 Meat draw	<b>15</b> <b>St Mary's Church:</b> 11.15 Family Service
<b>16</b> <b>Church hall:</b> 11.00 Petal Senses 19.30 Adult Ballroom and Latin Dance <b>BSSC:</b> 21.00 Quiz Night	<b>17</b> <b>Church hall:</b> 13.00 Petals Baby Yoga 15.55 Ballet 3-4yrs 16.30 Ballet 5-7yrs 18.30 Apton Dance	<b>18</b> <b>Church hall:</b> 10.00 Tai Chi 14.00 Tea Room 15.45 Fencing 18.30 Apton Dance <b>20.00 Parish Council Annual Public Meeting</b>	<b>19</b> <span style="background-color: green; color: black;">Green Bin#</span> <b>Church hall:</b> 10.00 Alzheimer's 12.30 Line dance 13.45 Line dance 18.30 Apton dance <b>BSSC:</b> 20.00 Bingo	<b>20</b> <b>Church hall:</b> 9.30 Baby Glows for toddlers <b>BSSC:</b> Bottle Draw	<b>21</b> <b>Church Hall:</b> 9.00 Dance for Kids <b>BSSC:</b> 13.00 Meat draw	<b>22</b> <b>St Mary's Church:</b> 11.15 am Holy Communion <b>BSSC:</b> Mothers Day lunch
<b>23</b> <b>Church hall:</b> 11.00 Petal Senses 19.30 Adult Ballroom and Latin Dance <b>BSSC:</b> 21.00 Quiz Night	<b>24</b> <b>Church hall:</b> 13.00 Petals Baby Yoga 15.55 Ballet 3-4 yr 16.30 Ballet 5-7yrs 18.30 Apton Dance	<b>25</b> <b>Church hall:</b> 10.00 Tai Chi 14.00 Tea Room 15.45 Fencing 18.30 Apton Dance 19.30 BAGS	<b>26</b> <span style="background-color: black; color: white;">Black Bin</span> <b>Church hall:</b> 10.00 Alzheimer's 12.30 Line dance 13.45 Line dance 18.30 Apton dance <b>BSSC:</b> 20.00 Bingo	<b>27</b> <b>Church hall:</b> 9.30 Baby Glows for toddlers <b>BSSC:</b> Pot of Gold	<b>28</b> <b>Church Hall:</b> 9.00 Dance for Kids <b>BSSC:</b> 13.00 Meat draw 21.00 TimeWarps - LIVE	<b>29</b> <b>St Mary's Church: Note!</b> Service at St. Johns Church, Stansted 10.30 <b>BSSC:</b> 16.00 Kids Film

Live Entertainment - Great Food - Excellent Bar - Snooker - Darts - Pool - Football - Cricket - Bowls

## Sports & Social Club News



### What's on at the club

6 <sup>th</sup> March	Bottle Draw
7 <sup>th</sup> March	Six Nations- England v Wales 16:45 pm LIVE
13 <sup>th</sup> March	50/50 Win or Lose
20 <sup>th</sup> March	Bottle Draw
22 <sup>nd</sup> March	Mothers Day Lunch
27 <sup>th</sup> March	Pot of Gold
28 <sup>th</sup> March	Timewarps Live at 9.00 pm
29 <sup>th</sup> March	The Good Dinosaur - Film for Kids 4.00 pm
11 <sup>th</sup> April	Main Offender Live at 9.00 pm / Easter Raffle Draw

### Farewell to Kenny and Katie!

Kenny and Katie have worked extremely hard at the Social club over the past couple of years, it was unfortunate that they decided that they would like to change careers and consequently they left in December. We would like to thank them for all of the hard work they put in and we wish them both the very best in their new jobs



**Saturday 7<sup>th</sup>  
March 16:45**  
**England vs  
Wales**  
**Live on the  
Big Screen**



**Sunday 22<sup>nd</sup>  
March.**  
**Please  
contact the  
Club for  
more details**

Day	Event	When
Mondays:	Quiz Night	21.00
Thursdays:	Bingo Night	20.00
Saturdays:	Meat Draw	13.00

#### Club Opening Hours:

Mon/Tue/Thu: 17.30 - 23.00  
Wed: 12.00 - 15.00 & 17.30 - 23.00  
Fri: 12.00 - 23.30 Sat: 09.30 - 23.30  
Sun: 12.00 - 22.30

#### Restaurant Hours:

Thursdays: 17:30-21:00  
Fridays: 12:00-15:00 & 17:30-21:00  
Saturdays: 09:30-12:00 (Breakfast) 12:00-15:00 & 17:30-21:00  
Sundays: Fresh rolls from the bar at opening

### Welcome to our new Stewards!

Charlie Moore and his partner Lynne have extensive experience running clubs and pubs for over 25 years. Charlie was a tank soldier in the armed forces before entering the hospitality trade. Both are qualified in all aspects of bar and kitchen management and are greatly looking forward to living in and running the club and meeting all our members. You can meet them on the 17<sup>th</sup> February.





**Saturday  
28<sup>th</sup>  
March**  
**Live at  
9pm**

**Free to  
members  
£3 for  
guests**



**29<sup>th</sup> March**  
**4.00 pm**  
**Film for Kids**  
**Free Popcorn  
and Juice**

Children must be supervised



**Pot of  
Gold**  
**Fri 27<sup>th</sup>  
March**



**50/50 Win or Lose**  
**Fri 13<sup>th</sup> March**

Birchanger Sports & Social Club  
229 Birchanger Lane, Birchanger, CM23 5QJ  
Tel: 01279 813441 Email: [club@birchanger.com](mailto:club@birchanger.com)  
[www.birchangerclub.com](http://www.birchangerclub.com)





## Birchanger Primary School

### Our amazing school garden

At Birchanger C of E Primary we are very fortunate to have extensive grounds which contain a wonderful nature garden. This amazing resource has become very overgrown over the years and this has meant that most of our children haven't been able to go inside it for a number of years.



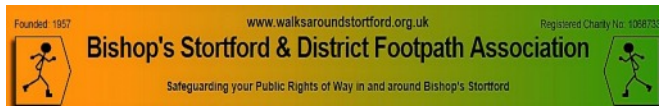
Thanks to the help of the Stansted charity Human Roots we are going to make some big changes to claim our garden back from the brambles and nettles. We hope to replace the current overgrown areas with a range of trees and plants.

This will provide our children with learning opportunities and mental health and wellbeing support.

In order to transform this garden we are going to involve all of our children and we hope that our families will join us for a tree planting at the end of March. The school is receiving 100 trees from the Woodland Trust and planting them will not only help the children to learn but it will help us to secure our Gold Award for this organisation.



We are also holding a community day on 28th April where we are hoping that members of the communities that serve our school will come and help us to add the plants to the cleared beds. The day will start at 10am and will run until 4pm. No experience is necessary to join us, just enthusiasm! We will provide tools and refreshments to keep us all going. It would be wonderful if you could come and join us for an hour or so and be part of this horticultural adventure that we are embarking upon. *Claire Berry - Headteacher*



**Sunday Walks** Departing 10.00am 5/6 miles  
8th March Perry Green, The Hoops, Tel: 439174, SG10 6EF

**22nd March** Harlow-Eastwick Memorial & Pub, Tel: 434117, CM20 2QY

Well what can I say regarding the weather? The ground underfoot should have been frozen and solid at this time of year but no, it has been both slushy and slippery – well such is life! I am hoping that my walk in February will conform to statistics; however everything appears to be in the big 'melting bag'.

So, we have loads of birds and flowers, even a bumblebee today (31.01.2020), thinking that spring is here. Our footpaths are definitely interesting, even some of our local 'diddy' roads are flooded and off-road, the paths are definitely slippery. However, with the correct boots and a good stick (forget that it makes you look old) a stick really does help you with your balance and it increases your walking strength! YES.

We really have good programme coming up so keep on coming. My good friend and neighbour, Lorna (and her tiny terrier) have been coming along with me on my last few walks to 'suss' out the most varied paths underfoot, good views, and best routes. We think our latest walk in February was an interesting one, ignoring the weather conditions.

Walk leaders do have to carry out a lot of exploratory walks to find a walk that suits everybody and we need more people to help out in this respect. As for myself, as a female on my own, it is pretty daunting but in the end it is so very satisfying. So I ask you, would you like to come with me and my unsung hero, Lorna and sort out a walk, we do it during weekdays.



I don't possess a camera or an iPhone and therefore I am totally reliant on readers and walkers to send me their photographs during their walks, so please send me any photos that you may think are of interest. I call the one above 'Let's get onto a Footpath'. It was taken in Stansted, does anyone recognize it?

*Daphne Wallace-Jarvis, Publicity Officer:*

dwjjwj.444@gmail.com

[www.walksaroundstortford.org.uk](http://www.walksaroundstortford.org.uk)

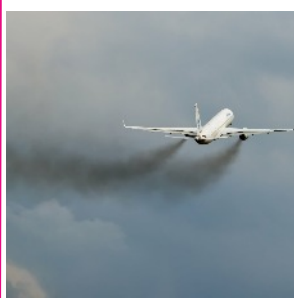




## Two steps forward and one back

It's been an eventful month for SSE in its long-running battle against the current Stansted Airport planning application, submitted two years ago by Stansted's owners, the Manchester Airports Group (MAG).

On 24 January, after seemingly endless deliberation, Uttlesford District Council (UDC) finally decided to refuse MAG's proposals. If the proposals had been approved, Stansted would have been allowed to handle 43 million passengers a year, making it almost as big as today's Gatwick, and it would have meant an extra 200 flights a day compared to today's levels.



MAG has always insisted that its planning application should be dealt with locally rather than nationally and so SSE has called upon MAG to respect the local UDC decision. The fact that MAG has not obtained the result that it wanted from UDC should not mean that it can now simply reverse its position and insist on its application being dealt with at national level.

Nevertheless, it is widely expected that MAG will appeal against UDC's refusal to the Secretary of State, the consequence of which would be a lengthy public inquiry and further uncertainty.

From the outset SSE has argued that this airport planning application should be dealt with nationally rather than locally – not least because the previous UDC administration made no secret of their intention to approve the application. However, the political landscape changed radically at the May 2019 local elections and the new Council has scrutinised MAG's expansion proposals for Stansted far more critically.

SSE's second line of defence was a legal challenge in the High Court to try to force the planning application to be dealt with nationally rather than locally. That case was heard last November and the Judge gave his ruling on 7<sup>th</sup> February this year, deciding against SSE, which creates a slightly tricky situation.



If MAG agrees to accept the UDC decision rather than lodge an appeal, there will be no need for SSE to challenge the High Court ruling. That is the outcome that SSE is hoping for, but it will be important to keep options open. *Brian Ross*

## Stansted Mountfitchet U3A 10th Anniversary 2019-20



It was a cold and misty morning in January when Tony Wellings and the Walking Group set off for Bishop's Stortford in order to return to Stansted via the tow path then through the Town Park and the Country Park. Tony is very knowledgeable on wildlife, but this time it wasn't a new species of hedgehog he discovered but an old discarded broom. Just what he needed,

as you can see by the beam on his face in the photograph below.



We have had a meeting for new members with tea and some lovely home made cakes and hope to make these a regular feature during the year. Two other new groups have also started; Book Group

2020 which will meet on the first Tuesday of the month and a Pilates Group which will meet on Thursdays at 12.50pm. The new cribbage group would also welcome some more members. They meet at the Day Centre on the 4th Thursday at 2.00pm. Further details of these groups can be found on our website: [www.u3asites.org.uk/stansted](http://www.u3asites.org.uk/stansted), or ring 0787 4385541.

At our next Saturday seminar on March 14th Neil Faulkner will be presenting 'The History of the World in a Morning' (minus the boring bits) Tickets can be ordered and paid for on our website. On the 9th May we will be having a special 10th Anniversary Quiz and Supper. Put this in your diary now, more details to come later.

The Speaker at our next Meeting on 20th March in St John's Hall, 1.30pm for 2.00pm, will be a local historian, Kate Cole, a genealogist and author who will speak on 'The Witches of Elizabethan Essex.' Tony – don't forget to bring your broom! Submitted by Eileen Quinn, Stansted Mountfitchet U3A



### Kemi Badenoch MP

Holds regular advice surgeries offering help and support for local residents.

If you would like to contact Kemi, you can email [kemi.badenoch.mp@parliament.uk](mailto:kemi.badenoch.mp@parliament.uk) or call 0207 219 1943





## The Hundred Parishes Society

Please take another look at the new polymer £20 banknote that has just been issued. It features the British artist JMW Turner (1775 – 1851) and his painting, *The Fighting Temeraire*. The



painting shows HMS Temeraire in 1838, being towed by a steam tug towards a scrapyard at Rotherhithe on the Thames. It was a sad ending for a ship that achieved considerable fame at the Battle of Trafalgar in 1805. The Temeraire was immediately astern of Nelson's flagship, the Victory, and played a major part in the battle, her crew capturing two enemy ships while suffering heavy casualties.



The captain of the Temeraire at Trafalgar was Eliab Harvey (1758 – 1830) from Chigwell in Essex. He shared his time between naval duties and being one of the two Members of Parliament for Essex. He was later knighted and promoted to the rank of admiral. Sir Eliab's final resting place is in the Hundred Parishes, in the Harvey family crypt beneath St Andrew's Church, Hempstead. The crypt holds the coffins of around fifty members of the extended Harvey family.

An earlier family member was William Harvey (1578 – 1657), the first doctor to describe the circulation of the blood. His mortal remains are also in Hempstead Church although his body was moved in 1883 by the Royal College of Physicians from the crypt into a large sarcophagus in the chapel above the private crypt.

A print of *The Fighting Temeraire* hangs in Saffron Walden in The Temeraire, a Wetherspoon pub whose walls are richly decorated with pictures and information about local history.

The £20 note is not the first to have a local connection. The £50 note in circulation from 1994 to 2011 featured Sir John Houblon. Members of his family once owned Hatfield Forest.

Ken McDonald, Secretary [www.hundredparishes.org.uk](http://www.hundredparishes.org.uk)

## THE FORGOTTEN GARDENS OF EASTON LODGE

March is usually daffodil time at the gardens and an opportunity to draw breath after the snowdrop open days. It is also the time to prepare for the full season monthly open days which are held from April to October.

This year, the winter weather has not been very kind, so volunteers' work has focused on infrastructure. There are still more path and fruit cage repair jobs, carpentry and painting to do. It is not quite the scale of the Forth Bridge but each year, as we develop new areas of interest for visitors, we add to the maintenance work!



Overwintering plants seem to have fared ok, so in the borders we will be giving shape to existing planting and adding more colour and variety. We are extending the dahlia bed and rotating our vegetable crops in the walled kitchen garden and filling out the Japanese garden. In the Italian garden, we are reducing the spread of some of the existing plants to make room for others.

We are always open to new volunteers, both for work in the gardens and to help on open days. We will be holding our annual new volunteers' day on 26<sup>th</sup> March. For more information on volunteering, on our open day dates, or arranging a group visit, please go to our website: [www.eastonlodge.co.uk](http://www.eastonlodge.co.uk) or ring our enquiries line: 01371 876979.

Jill Goldsmith



P. D. Tucker & P. Stapleton

Hazel End Road, Hazel End, Bps Stortford, Herts CM23 1HB

Tel: 01279 813429

Mon-Sat: 12noon - 3pm & 6 - 11pm Sunday: 12noon - 3pm



## Village Services and Activities

Alzheimer	Marian	07803 115826
Art Studio & Gallery	Heather Brown	01279 815453
Art Studio & Gallery	Brian Gough	01279 815012
Ballroom Dance	Fred Winters	01763 271942
Ballet for kids	Philippa McMeechan	01763 271010
Birchanger Magazine	Peter Sampson	01279 813193
BAGS	Rosemary Wheatley	01279 814678
Birchanger Voices	Tony Wilson	01279 813007
Birchanger Nursery	Karen Reilly	01279 810800
Bird Food	Lesley Robins	01279 812248
Builders - Another Level	Matt Marks	01279 814273
BSSC Club	Charlie Moore	01279 813441
Chiropodist	Julie Golden	01279 873492
Car Service	D. Bonney	01279 813315
Dementia	Debbie Baker	07927 011345
Dance	Maxine Williams	07854 251528
Garden Services	GWB Horticulture	01799 543483
Hairdresser Men/Boys	Emma Marks	01279 814273
Line Dancing	Shelley	01279 864781
Launderette	Ian Kennedy	01279 866183
Nail & Pedicure	Hien's Nails	01279 507019
Neighbourhood Watch	Peter Sampson	01279 813193
Over 60's club	Jean Camp	07843 707249
Painting & Décor	David Debnam	07973 861268
Parish Clerk	Keith Williams	01279 814773
Petals Children's Play	Hana Hainsby	07730 619522
Police Special	Martin Halls	<a href="mailto:Martin.Halls@essex.police.uk">Martin.Halls@essex.police.uk</a>
Property Services	Mark Taylor	07941 357934
Public Safety	Peter Sampson	07817 904333
St. Mary's Church	Elaine Wright	01279 813474
Tai Chi	Cait Goddard	07415 628935
The Three Horseshoes	Paul & Paula	01279 813429
The Three Willows	Mark Boden	01279 815913
Village Church Hall	Barbora Dragoskova	01279 815243

## Village Church Hall



**Modern hall, superb kitchen and additional meeting room available for hire**



### Forthcoming Fundraising Events:

Tearoom every Wednesday from 2.00pm to 4.00pm

### Hall Hire:

**Hall Administrator** - Barbora Dragoskova Tel. 01279 815243

Email [st.johns.church@btinternet.com](mailto:st.johns.church@btinternet.com)

**Key Holder** - Elaine Wright Tel. 01279 813474

Email: [stmaryschurch.birchanger@gmail.com](mailto:stmaryschurch.birchanger@gmail.com)

## St. Mary's Church News



### Church services

1 <sup>st</sup> March	11:15 am	First Sunday of Lent Matins service
8 <sup>th</sup> March	11:15 am	2 <sup>nd</sup> Sunday of Lent Holy Communion
15 <sup>th</sup> March	11:15 am	3 <sup>rd</sup> Sunday of Lent Family service
22 <sup>nd</sup> March	11:15 am	Mothering Sunday Holy Communion
29 <sup>th</sup> March	11:15 am	No service at St Mary's (see below)

### Church News

On the 29th March there will be a special Joint Benefice service held at St Johns Church Stansted at 10:30 am. We are encouraging all congregations from the three parishes to attend. After the service there will be time for a get together and refreshments. Anyone wishing to attend and need transport, please contact me.

The Parochial Church Council will hold its annual general meeting on the 26th April after the morning service. All are welcome to attend this important meeting to hear about the church mission and its financial position. We would love more people to attend and perhaps more volunteers to help with this important work. If you could spare some time for an hour or so on a Sunday morning to be with us, that will be great. Or if you want to just get involved please send us an email to the address below.

### Did you know?

Mothering Sunday in Britain (22<sup>nd</sup> March) has its origins centuries ago from the celebration of the third Sunday of Lent which was the day to visit the mother church or cathedral, it also included making a Simnel cake and taking it to mother. It was also a day in which those in service were allowed a day's leave to visit their mothers. At St Mary's, as in many churches, Mothering Sunday is celebrated by handing out posies of spring flowers to the mothers (and grandmothers) in the congregation by the children at the service.

### Dates for your Diary:

12th May, Coffee morning at Moorswood 10:30 am.

13th June, St Mary's Musical Charity Night with the Stansted U3A choir and Birchanger Voices (to be held in the hall).

Summer lunch date to be confirmed.

22nd October, The Fashion show returns! Date and Time to be confirmed.

### A Prayer for the Lent season

Come, all who are thirsty  
says Jesus, our Lord,  
come, all who are weak,  
taste the living water  
that I shall give.

Dip your hands in the stream,  
refresh body and soul,  
drink from it,  
depend on it,  
for this water  
will never run dry.

Elaine Wright (Church Warden)

[stmaryschurch.birchanger@gmail.com](mailto:stmaryschurch.birchanger@gmail.com)

## Village Church Hall



For information and bookings contact;  
Barbora Dragoskova 01279 815243  
[st.johns.church@btinternet.com](mailto:st.johns.church@btinternet.com)  
Key Holder - Elaine Wright 01279 813474  
[stmaryschurch.birchanger@gmail.com](mailto:stmaryschurch.birchanger@gmail.com)

## THE THREE WILLOWS



Fine dining & good beers. Children and dogs welcome. Bookings: 01279 815913  
Monday to Friday: 12 to 3pm & 5 to 11pm  
Saturday: 12 to 11pm Sunday: 12 to 6pm

## Quality Wild Bird Food

Premium Wild Bird Table Mix  
Peanuts  
Sunflower Hearts  
Niger Seeds  
Fat Balls  
Suet Pellets  
Meal worms  
Feeders etc.

Email: [villagebirdfood@gmail.com](mailto:villagebirdfood@gmail.com)  
Tel: 01279812248 Mob: 07752672187  
Free Delivery in Birchanger & Stansted

## D. Bonney & Sons



MOT Testing - Servicing - Diagnostic  
Mechanical Repairs  
Selection of New and Used Cars

Yew Tree Corner, Manuden  
Ring Malc or Niel on  
01279 813315 or 01279 815946

## State Registered Chiropodist

Mrs. Julie Golden S.R.Ch.

Home Visiting Practice

Est 1994  
Tel: 01279 873492  
Mob: 07916075451  
Dunmow Road  
Takeley CM22 6SH

A

## Painting & Decorating



Bring new life to  
your home  
Interior - Exterior  
General  
Maintenance  
No job too small

**David Debnam**

Tel: 01279 815214 Mob: 07973861268



**St.  
Mary's  
Church  
Urgently  
Needs  
Help!**

St. Mary's Church are in urgent need of a treasurer, a secretary and a churchwarden. Anyone who would like to help in any way. Please contact Elaine Wright:  
Tel. 01279 813474  
Email:  
[stmaryschurch.birchanger@gmail.com](mailto:stmaryschurch.birchanger@gmail.com)



LAUNDERETTE

WE  
DO  
DUVETS  
DIVINELY  
AND CLOTHES TOO!

Open 7 days a week  
Hockerill lights, Bishop's Stortford  
Large car park Tel: 01279 866183



## Aerial Satellite AV Security

- Aerial Installations
- Sky Installations & Subscriptions
- CCTV & Security Alarms
- Freesat Installations & Receivers
- Audio Visual Installations
- Multiroom Music & TV Distribution
- Wireless & Wired Networks
- TV Wall Mounting Services
- Family Run Business



01279 656 983 - 0800 587 2556

Unit 1, Suite 1 Peak Business Centre, Woodside Industrial Estate, Bishops Stortford CM23 5RG

### Wireless Security



Intruder alarms have never been so  
simple to install,  
operate, maintain and clean.

Mediacoms uses the latest  
technology to keep you & your  
property secure.

YOUR HOME AND COMMERCIAL SECURITY INSTALLER  
ALARMS CCTV DOOR ENTRY GATE AUTOMATION

[www.mediacom.co.uk](http://www.mediacom.co.uk)

[info@mediacom.co.uk](mailto:info@mediacom.co.uk)

**ADVERTISE  
HERE**

**If you are reading this,  
so are your  
potential customers!**

**Contact us for details.**



**Friendly, Professional & Reliable  
Sustainable Garden Services Provider  
Gardening, Landscapes & Tree Works**

Tel: 01799 543483 Mob: 07866 752713

- |                              |                                    |
|------------------------------|------------------------------------|
| One off Garden Tidies        | Regular Garden Maintenance         |
| Hard & Soft Landscaping      | Tree Pruning, Felling & Reductions |
| Hedge Cutting & Trimming     | Fencing & Timber Structures        |
| Advice & Planning            | Traditional Countryside Crafts     |
| Planting and Plant Sourcing  | Leaf & Snow Clearance              |
| Log Splitter & Operator Hire | Soil, Log & Aggregate Delivery     |
| Chipper & Operator Hire      |                                    |

Free No Obligation Quotes  
[www.gwbhorticulture.co.uk](http://www.gwbhorticulture.co.uk)

The Birchanger Village Magazine is published on behalf of the people of Birchanger and distributed free to 450 households in Birchanger. The views expressed herein do not necessarily reflect those of the editor, the magazine or any organisations or institutions represented. Material sent to the editor will generally be printed as received providing it is considered suitable by the magazine team. The editor reserves the right to edit content if considered unsuitable or where insufficient space is available. All material should be submitted by the 16th of the month to be published the following month.

**Printers:** Keeley & Lowe Tel: 020 7729 3350 - Email: [info@keeleylowe.com](mailto:info@keeleylowe.com)

**Editor:** Peter Sampson Tel: 01279 813193, Email: [magazine@birchanger.com](mailto:magazine@birchanger.com)

**Chairman:** Elizabeth Godwin.

**Treasurer:** Ken Wheatley.