



# Birchanger Village Magazine

November 2019

Issue 202



## Birchanger Community Speed Watch Gets Training - At Last

After an 11 month wait, Speed Watch training for ten Birchanger volunteers will be given at the Village Church Hall on the 6<sup>th</sup> November between 1.00pm and 3.00pm. The delay was reported to be due to lack of resources and high demand from other villages. The training will be given by Safer Essex Roads Partnership, part of Essex Highways.

Community Speed Watch is a scheme to allow volunteers to monitor the speed of passing vehicles using a hand-held speed detection device. These details are passed to the Police, who will issue a letter to the vehicle owner, advising them of the dangers of speeding, and reminding them of the law. The volunteers will operate in a location that has been approved by the police and will operate only during daylight hours.



Volunteers use hand-held devices that tell them the speed at which drivers are travelling through their 'patch'. When a driver is going a set amount above the speed limit – typically around 10% – the vehicle's registration, make, model and colour are recorded. A spreadsheet of the offenders' details is then passed to the local police force, which will likely add them to a national database.

### Will the driver get a ticket?

These schemes are predominantly about education, meaning no speeding tickets will be issued. Additionally, most schemes use equipment that is not of the correct specification, so issuing a penalty would not be possible on a legal footing. While penalties can't be issued, officers will act if speed watch volunteers repeatedly report a vehicle to the cops. Each force is different, but, typically, police will act after two reports of a vehicle speeding. In such a case the owner of the vehicle will be sent an official letter reminding them of the law. If three letters are sent, the force will carry out further investigation.

Most community speed watch activities take place in residential areas, with speed limits of 30-40mph, so driving at excessive speed is a serious offence. If a vehicle is reported for such an 'offence' the local police force is likely to take the case further with a 'strongly-worded' letter. Prosecution will not be possible from the speed watch team's recording. However, many police forces say they will actively 'target' repeat offenders for 'enforcement'.

## Was that a Bus?



## Find out about transport options in our area

There's no doubt that living in this part of the UK has many advantages. We are surrounded by beautiful countryside and picturesque villages, have London within easy reach, Cambridge on our doorstep, and all number of stately homes and interesting places to visit.

However, life being what it is, rural living comes with its own set of issues. One of which is transport. Cuts to local services mean buses are few and far between. So for most of us a car is essential - whether to get to the station for the daily commute, to medical appointments or the nearest town. But what happens when driving is no longer an option? According to Uttlesford Frontline, there are alternatives, although tracking them down can be time-consuming and frustrating. And what's available largely depends on where you live.

For the over 60's who find public transport too difficult, Uttlesford Community Travel can be a godsend as can the social car schemes which some villages offer to ferry residents to medical appointments. While for those who have been assessed as in medical need there's the non-emergency transport service for hospital appointments.

For a comprehensive overview of all local transport options, Uttlesford Frontline offers a free fact sheet called "Getting Places". Just visit online at; <https://uttlesfordfrontline.org.uk> and click on 'Transport' under 'Areas of Help'.

Information includes: Social car schemes; bus travel - with access to route planning and timetables; DaRT (on demand) services, villages covered and booking details plus how to check whether a particular bus is accessible for anyone with mobility problems; rail travel and how to gain assistance by Greater Anglia, as well as at Stansted Airport. Details about concessionary bus passes, the Blue Badge Scheme and help available to pay travel costs for medical appointments are included together with full contact details, links and telephone numbers.



# Editors Letter Box

## Dear Readers,

As you have read on the front page, Community Speed Watch is starting up in Birchanger in November. We have already appointed ten volunteers that want to participate in catching speeding cars and motorcycles in the village but we would like a few more people to spread the load on speed check days. Training will be given and it entails spotting, recording and reporting vehicles travelling over the speed limits in Birchanger Lane. Speed checks are done in groups around 2 or 3 times per month. If you are interested in joining Birchanger Speed Watch team then please call me on: 01279 813193 or email me at: [magazine@birchanger.com](mailto:magazine@birchanger.com).

In the meantime, Birchanger Parish council, together with County Councillor Ray Gooding, are looking at fresh initiatives to combat speeding in Birchanger and the possibility of installing various speed calming measures, so watch this space!

### Trevor Stone steps down as Magazine Distribution Manager

The Magazine team would like to thank Trevor Stone for his dedication over many years in his position as distribution manager for the magazine, without whom you would not receive your monthly magazine. Unfortunately for us he is leaving the village at the end of the month. Good luck with the move Trevor and Sally. Annalise Martin has kindly volunteered to take his place, starting this month.

## Christmas joy with Bishop's Stortford Choral Society



On 7 December Rutter's Requiem and Vaughan Williams's Fantasia on Christmas Carols will make a great way to start getting in the mood for Christmas! Vaughan Williams's 1912 twist to these carols probably contributed to them becoming much more well-known. Rutter completed his requiem in 1985 in memory of his late father and it was first performed in the Methodist Church in Dallas. In Bishop's Stortford, the Choral Society will also perform in the Methodist Church, in South Street, at 7.30pm on 7 December. The concert will include a raffle to raise funds for the Winter Night Shelter in the town.

Tickets and information on the Society can be found at: [www.singwithbscs.org.uk](http://www.singwithbscs.org.uk)

### Background:

Bishops Stortford Choral Society is a group of around 100 singers, led by its accomplished Musical Director Richard Brain. It is always pleased to welcome new members – so will hold an open rehearsal on 16 January, 7.45 pm at the Water Lane United Reformed Church.

The Choral Society sing large scale choral music by new and established composers and holds its concerts locally, most often in the town. It rehearses on a Thursday evening at 7.45 pm at Water Lane United Reformed Church between September and July. The Society's 2020 concerts include Rachmaninov's Vespers on 14 March in All Saints church and Elgar's Dream of Gerontius on 27 June in the Saffron Hall.

For more information go to: <http://www.singwithbscs.org.uk> or find them on Facebook.

Don't forget, your magazine is only as good as the content it receives, so please keep sending me your news, views, notices, concerns and complaints. Advertisers are also welcome. All copy should be submitted by the 16<sup>th</sup> of the month, preferably sooner and may be edited depending on space and content. Please contact me by E-mail, phone, or letter as shown below. Thank you and Kind Regards,

Join us on Facebook: [www.facebook.com/birchanger/](http://www.facebook.com/birchanger/)

*Peter Sampson*



[magazine@birchanger.com](mailto:magazine@birchanger.com)



01279 813193



2 Harrisons, Birchanger



# VILLAGE NEWS

*By Elizabeth Godwin*

## The Big Light Up Is Just a Month Away

The Big Light Up is on Friday November 29<sup>th</sup>. It will start as usual with Birchanger Club switching on its Christmas lights at 7.00pm followed by the rest of the village switching on their lights soon after. As in previous years, there will be a competition for the best light presentation in the lane and side roads chosen by the villagers. Every house in Birchanger can participate in making Birchanger one of the loveliest sights of Christmas. It is always a pleasure to walk in the village and see how lovely they all are. It is hard to choose a favourite but it is the choice of everyone who lives here. Voting slips can be found at the club, just put the address of the house whose display you like the best, with the name of the householder if you know it in the voting box in the club porch. You can also drop your vote in to my house at 330 Birchanger Lane. Last year's winner, John Clark, cannot be voted for this year. There is a cup for the winner which they hold until the following year. Remember that every Christmas light display is quite unique. Size does not matter, it is only the taking part that matters. The winner will be announced at 9 pm in the Club on Friday December 20<sup>th</sup>.

## Village Wedding Venues

Through the years the village hall has hosted many wedding receptions, either self-catering or with outside caterers brought in. Now if you are planning a small quiet affair you might also like to consider the Three Willows. There was a wedding reception there a few weeks ago. The reception took the form of drinks and a buffet. A large table was created to seat at least 30 guests and more space could have been made available, in the higher level of the pub. This space was reserved exclusively for the wedding party. Food was set out on a large table and any other customers were able to use the lower areas and the public bar. The arrangement worked well, and shows that The Three Willows is a location to consider for those planning a smaller wedding. There have been larger events in a marquee in the garden throughout the year.

## Do You Need a Lifeline?

If you are disabled, long term sick or just a bit more unsteady than you used to be a Lifeline Alarm could be just what you need. Using one of these can summon the right help just when you need it. Invaluable after a fall and other situations for so many people.

## Birchanger All Girls Society

The 'BAGS' invite woman of all ages to join them on the last Wednesday of every month in the village church hall

### Forthcoming Meetings:

Wednesday 27<sup>th</sup> November 2019 7.30 for 8.00 pm

An evening of Christmas songs with the help of

The Birchanger Voices

Followed by cheese and wine

Olivia: 07568 574703

Rosemary: 01279 814678

Uttlesford District Council are offering free installation of a lifeline system for a free 12 week trial period so you can discover just how the system works and the benefit the device brings to you. The worst months of the year for weather are on their way, so this is a very good time to consider using Lifeline for a trial period. You can find out more on 01799 510577.

## Stay in Birchanger and go to the Club

### STEAK NIGHT



Why not support your local club and try the steak night on Wednesdays? There is a special deal covering a steak meal for two including a bottle of wine for just £25. Just the thing for a mid-week pick-me-up. Those who have tried it said they would definitely recommend it. The normal menu is

not available on Wednesdays but is of course available on most other nights. There are always things going on at the club, so if you haven't tried it, perhaps now's the time.

## Manage Your Council Tax online

This is the time of year when there are a lot of demands on your bank balance. Unfortunately, council tax is one demand that has to be paid and there is no escaping it. There can be months when financial pressures are a little less and you could pay a little more off this inevitable council tax bill. This would mean there could be less to pay in months of high financial pressure which is where online management of council tax could benefit you. Find out more at UDC Revenues on line.

## Community Project Grant Scheme

Does your group, club, council, or any other properly constituted group in Birchanger need money for a particular project? Uttlesford District Council has grants, normally match funded, from between £100 to £3500 on offer until November 29<sup>th</sup> for any qualifying village scheme for a particular village project which will benefit the community. People in Birchanger have been awarded these grants before and it has made all the difference to their success. If this could apply to your club or organisation in Birchanger which is properly constituted and would like to find out more, call Sue Hayden on 01799 510563.



**ANOTHER LEVEL**  
**CONSTRUCTION Ltd**  
Don't just build .....create!

- New Build
- Extensions
- Conversions
- Renovations
- Roofing
- Brickwork
- Plastering
- And more



TELEPHONE 01279 814 273 MOBILE 07710 099 284



info@anotherlevelconstruction.co.uk

www.anotherlevelconstruction.co.uk

### What's New at Saffron Walden Museum?

This month, Saffron Walden Museum is putting on a 'Wild Life in Our Area' exhibition. The exhibition will run to the end of half-term and aims to show the huge range of wildlife to be found all over North West Essex. The exhibition will make us aware of what is all around us and perhaps inspire some to create their own wildlife area in their own gardens. After all we had Red Kites in Birchanger this year and there is a lot more out there to discover if you only know where to find it. For those wanting a rather different Halloween experience, you could try an evening among the ghosts at the museum on October 30th between 6.00 and 9.00pm. The ghosts will certainly be there along with other Halloween surprises.

### Foster Parents Are Needed Urgently

You need no special qualifications to become a foster carer, just time and commitment. Time might be where the problem lies for most of us who have busy lives. Foster children do go to school and have their own interests. All they need is the commitment, care, a safe home and a normal childhood which the majority of them have lacked for most of their lives.

Training will be required and will be given locally. Support is available 24/7. Children are matched to families, couples, or even a single carer. Age is no barrier, 69% of carers are over the age of 50. You may be single, a single parent, family, a same sex or heterosexual couple. You could be in your early twenties or retired. Inquiries are invited from everyone who is interested in bringing a child in need into their household. If you do decide to consider fostering, or want to find out more about what is involved, call 0800 801 530 for more information. There are children of all ages out there needing a home and people who are considering fostering a child are welcome to call that number to find out more. People might be worried about cost to themselves and if they could actually afford to do this. There is an allowance paid to every foster carer depending on the needs and age of the child. This could be up to £485 per week. Just call the number and find out more.

### Restaurant Review

The Mountbatten Indian restaurant in Bishop's Stortford was once the Red White and Blue pub. It has convenient access and good parking facilities attracting a large number of takeaway customers. The thriving takeaway business may be impacting adversely on those customers preferring to 'eat-in'. The volume of those coming in and out for a takeaway on the Saturday evening we chose to visit seemed very high. Meanwhile the restaurant, which was two thirds full of eating-in customers, simply had to sit and wait. It was at least an hour and twenty minutes before our food arrived. Not acceptable to our party who had long since finished the poppadums. When the food finally arrived it was very good. However, by then we were tired so we simply ate and left. A shame because delicious as the food ultimately was, the long wait seemed to sour everything. It appeared that other diners felt the same. The Mountbatten claims that the delays were caused by staff shortages. If so they have been going on for a long time. We had the same experience last year and hoped that there had been sufficient time for things to change, but unfortunately not!



Our U3A members have certainly been very busy over the last month. The Stansted U3A Singers annual concert at St John's Church played to a packed house and was enjoyed by all, audience and singers alike.



The seminar 'An Introduction to the Milky Way' saw a repeat visit by Dr Carolin Crawford of Cambridge University. The images and information were as amazing as usual. Don't miss out on our next Seminar on British and European Butterflies which will take place on 2nd November with butterfly specialist Richard Gibbons. See our website for details and tickets.

The Bus Pass Group had a visit to Welwyn Garden City for some shopping and to visit the Roman Baths. The Art Appreciation Group visited Hatfield Forest for inspiration and a large group went to Brick Lane Music Hall for lunch followed by an old-fashioned music hall show.

Don't forget to book for our Christmas Lunch at Bury Lodge on 19th December. The Bus Pass Group will be having an early one at the Cross Keys Pub in Saffron Walden in November. Some of the Poetry Group will be visiting Saffron Hall to see Benjamin Zephaniah in November and will be reading and discussing the poetry of Black Poets.

If you missed coming along to our 10th Anniversary Showcase in October, you are still welcome to visit us at a General Meeting, third Thursday of the month at St John's Church Hall to meet friends old and new and see if you like what we offer. Or you can contact us via the website or on the phone number below. At the meeting on 21st November a very popular speaker returns: Charlie Haycock will be taking an eccentric look at the countryside. Don't forget that parking restrictions in St John's Road are lifted for our monthly meetings between 1pm and 4pm.

*Eileen Quinn and Sally Rich ~ Stansted Mountfitchet U3A*

Tel: 07874 385541. Website: [www.u3asites.org.uk/stansted](http://www.u3asites.org.uk/stansted)



### Emma Marks Men and Boy's Haircuts

Tel: 01279 814273  
Mob: 07527227943

99 Birchanger Lane,  
Birchanger,  
Herts.  
CM23 5QF

### TAYLOR PROPERTY SERVICES



FENCING  
BOUNDARY HEDGE PLANTING  
EXTERNAL PROPERTY MAINTENANCE  
GUTTERING  
LANDSCAPING  
PATIOS AND DRIVEWAYS  
GARDEN CLEARANCE  
FLINT WALL REPAIRS

[mark.taylor@taylorsvcs.net](mailto:mark.taylor@taylorsvcs.net)  
[taylorpropertysvcs.com](http://taylorpropertysvcs.com)  
07941 357934





## How smart is a smart phone?

For those who bank online using a smart phone, please read the following account from a Lloyds Bank customer.



"I was the victim of attempted banking fraud recently. I received a phone call from 'Lloyds debit card fraud team' telling me that my account had been compromised and that they needed to check if three significant transactions attempted with my card, were made by me".

"They told me that there had also been an issue with my online banking so would need to transfer me to that department too. A few minutes later another 'Lloyds' team very convincingly ran through the security checks. They were even able to tell me the exact balance on my account, to the penny, to ensure I was confident it was a legitimate call. They also told me recent transactions that I'd made and were calling from the number listed on the back of my debit card. I had no reason to suspect anything! They then told me they had cancelled my debit card and I would get a new one in around three days, but to secure my online banking they needed me to go onto the app on my phone and directed me to change my password. At that point alarm bells rang".

"I asked that they just suspend my account entirely until I could get into the branch. At this point the man on the phone got quite pushy, telling me that as I wasn't following their security protocol and I would not be covered for any online bank transfers made from my account between then and when I could get into the branch in person. I had to return to work but an hour or so later called Lloyds from a land line. I went through the same procedure. First regarding the debit card fraud and then passed on to online banking fraud. Except at this point they confirmed that yes, an attempt had been made to make a large transaction on my credit card which they had blocked. But they stated no one from Lloyds had called me earlier that day and that my online banking was not compromised".

"This was all an elaborate scam. Someone had managed to gain access to my phone! The only way they had been stopped from full access to my bank accounts was due to the finger print recognition I have set up when I go online with Lloyds. The aim of the call was to get me to change the passwords on my phone, so that they could access my account! The lady from the Lloyds fraud team had not heard of this happening before and it seems to be a new scam. Please be vigilant. I cannot stress how convincing and professional the set up was".



The weather seems to be getting wetter. However, the forecasted winds and rain for Sunday the 29th September didn't really match the expected woe and doom and we have enjoyed a most generously dry summer.



A couple of interesting things: I went out with Tony Wellings the other day and we found a very rare nettle-leaved blue bell flower. Incidentally, I now know what badger poo looks like! Their latrines are some distance from their holts (their dens) and their poo - well it is rather like human 'dumps', and yes, a fairly large dollop.

It wasn't particularly windy but there was very little wildlife or birds about, so I think they may have been listening to the poor weather forecast. The leaves were still hanging onto the trees and bushes and there was an abundant supply of irresistible, large, and very sweet blackberries, a variety of hips, apples, and the bright red berries of the high climbing white Bryony (not edible and highly poisonous). Also about, were cobnuts, and some not so large, sloe berries. *Photo: Nettle leaved blue bell flower, courtesy of Tony Wellings.*

**Sunday Walks**      **Departing at 10.00am**      **5/6 miles**

03 Nov 2019 Hatfield Heath car park - behind the fish & chip shop TL 524151, Postcode CM22 7EB

17 Nov 2019 Gt Dunmow short stay car park, Chequers Lane TL 626219, Postcode CM6 1EQ

01 Dec 2019 ManudenCommunityCentre, David Collins Rd TL 486273, Postcode CM23 1EH

15 Dec 2019 Debden Village Shop, Mill Road TL 555335, Postcode CB11 3LB

26 Dec 2019 Departing 10.30am Stansted Castle car park TL 515248, Postcode CM24 8LY

12 Jan 2020 Braughing, opposite the Axe and Compass pub TL 379252, Postcode SG11 2QR

*Daphne Wallace-Jarvis, Publicity Officer -  
dwjjwj.444@gmail.com - www.walksaroundstortford.org.uk*

## Dynamic Counselling

**Therapeutic Services for Adults, Children and Families**

**A practice of two highly trained & experienced counsellors  
working at the heart of your local community.**

**We offer a safe, confidential space in which to work through  
and understand thoughts, desires, fears and anxieties.**

**Emma: 07900 348611 - Chris: 07585 080210**  
**info@ dynamiccounselling.co.uk**  
**www.dynamiccounselling.co.uk**

# what's on in the village...

		November 2019				
Mon	Tue	Wed	Thu	Fri	Sat	Sun
<b>Bin Collections:</b> Bradley Common collected on Fridays. Rest of Birchanger on Thursdays. <b>Garden bin collections marked with #</b>						
<b>Birchanger Parish Council Meetings:</b> Meets on the Tuesday of each month at 7.30 pm in the church hall - <b>Open to the public.</b>						
				1 <b>Church hall:</b> 9.30 Baby Glows for toddlers <b>BSSC:</b>	2 <b>BSSC:</b> 13.00 Meat draw 21.00 Hit Parade - LIVE	3 <b>St Mary's Church:</b> 11.15 am Mattins <b>Church Hall:</b> 12.00 Birchanger Litter Pickers Volunteers
4 <b>Church hall:</b> 11.00 Petal Senses 19.30 Adult Ballroom and Latin Dance <b>BSSC:</b> Quiz Night	5 <b>Church hall:</b> 13.00 Petals Baby Yoga 15.55 Ballet for kids 3-4 years 16.30 Ballet for kids 5-7 years	6 <b>Church hall:</b> 09.30 Tai Chi 14.00 Tea Room 15.45 Fencing 17.30 Apton Dance Studio 19.00 Apton dance for Beginners	7 <b>Green Bin</b> <b>Church hall:</b> 10.00 Alzheimer's 12.30 Line dance for beginners 13.45 Line dance 18.00 Apton dance - private lessons	8 <b>Church hall:</b> 9.30 Baby Glows for toddlers <b>BSSC:</b> Treasure Chest	9 <b>BSSC:</b> 13.00 Meat draw	10 <b>St Mary's Church:</b> 10.45 Remembrance day at memorial <b>BSSC:</b> 19.00 Firework Night - FREE display for all
11 <b>Church hall:</b> 11.00 Petal Senses 19.30 Adult Ballroom and Latin <b>BSSC:</b> Quiz Night	12 <b>Church hall:</b> 13.00 Petals Baby Yoga 15.55 Ballet for kids 3-4 years 16.30 Ballet for kids 5-7 years	13 <b>Church hall:</b> 09.30 Tai Chi 14.00 Tea Room 15.45 Fencing 17.30 Apton Dance Studio 19.00 Apton dance for Beginners	14 <b>Black Bin #</b> <b>Church hall:</b> 10.00 Alzheimer's 12.30 Line dance for beginners 13.45 Line dance 18.00 Apton dance - private lessons	15 <b>Church hall:</b> 9.30 Baby Glows for toddlers <b>BSSC:</b> 21.00 Esther Richards - LIVE Acoustic Night	16 <b>BSSC:</b> 13.00 Meat draw	17 <b>St Mary's Church:</b> 11.15 Family Service
18 <b>Church hall:</b> 11.00 Petal Sense 19.30 Adult Ballroom and Latin Dance <b>BSSC:</b> Quiz Night	19 <b>Church hall:</b> 13.00 Petals Baby Yoga 15.55 Ballet for kids 3-4 years 16.30 Ballet for kids 5-7 years	20 <b>Church hall:</b> 09.30 Tai Chi 14.00 Tea Room 15.45 Fencing 17.30 Apton Dance Studio. 19.00 for beginners	21 <b>Green Bin</b> <b>Church hall:</b> 10.00 Alzheimer's 12.30 Line dance for beginners 13.45 Line dance 18.00 Apton dance - private lessons	22 <b>Church hall:</b> 9.30 Baby Glows for toddlers <b>BSSC:</b>	23 <b>BSSC:</b> 13.00 Meat draw Evening - Charity Quiz Night in aid of Birchanger Nursery	24 <b>St Mary's Church:</b> 11.15 am Holy Communion - Christ The King
25 <b>Church hall:</b> 11.00 Petal Senses 19.30 Adult Ballroom and Latin Dance <b>BSSC:</b> Quiz Night	26 <b>Church hall:</b> 13.00 Petals Baby Yoga 15.55 Ballet for kids 3-4 years 16.30 Ballet for kids 5-7 years	27 <b>Church hall:</b> 09.30 Tai Chi 14.00 Tea Room 15.45 Fencing 17.30 Apton Dance Studio. 19.00 for beginners 19.30 BAGS	28 <b>Black Bin #</b> <b>Church hall:</b> 10.00 Alzheimer's 12.30 Line dance for beginners 13.45 Line dance 18.00 Apton dance - private lessons	29 <b>Church hall:</b> 9.30 Baby Glows for toddlers <b>BSSC</b> 19.00 The BIG Christmas Light Up	30 <b>BSSC:</b> 13.00 Meat draw Evening - Cat's Charity Race Night in aid of Tommy's The Baby Charity	30 <sup>th</sup> November <b>Church Hall:</b> 14.00 to 16.00 <b>Christmas Bazaar</b>



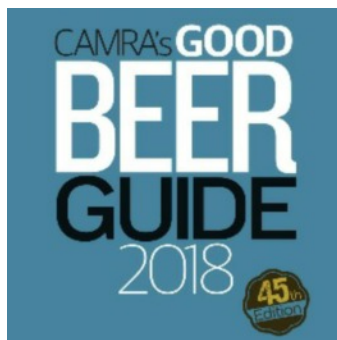


**BIRCHANGER**  
Sports & Social Club

## Sports & Social Club News



Live Entertainment - Great Food - Excellent Bar - Snooker - Darts - Pool - Football - Cricket - Bowls



### Treasure Chest

Try your luck and pick the right key,  
you could win £ Hundreds!



**Friday 8<sup>th</sup> November**



### Hit Parade

### Hit Parade

**LIVE Here on Saturday 2<sup>nd</sup> November 21.00**

Hit Parade are a four-piece covers band armed with an extensive and varied repertoire.

Hit Parade pride themselves on delivering an eclectic set to suit all types of music lovers.

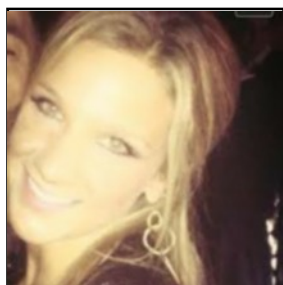
Combine that with their reputation for energetic performances; Hit Parade will ensure the best live music experience for any type of event. Not to be Missed!

**Firework Night - Sunday 10<sup>th</sup> November FREE Entry**



### Club Calendar at a Glance

Saturday 2 <sup>nd</sup> Nov.	Hit Parade - LIVE
Friday 8 <sup>th</sup> Nov.	Treasure Chest
Sunday 10 <sup>th</sup> Nov	Fireworks Night (Free) 7.00pm
Friday 15 <sup>th</sup> Nov.	Esther Richards - Acoustic Night! - LIVE
Saturday 23 <sup>rd</sup> Nov.	Charity Quiz Night for Birchanger Nursery
Friday 29 <sup>th</sup> Nov.	Turning on the Christmas Lights 2019 with Birchanger School Choir / Carol Service
Saturday 30 <sup>th</sup> Nov.	Cat's Charity Race Night



**Esther Richards**  
Acoustic Night - LIVE  
Friday 15<sup>th</sup> November  
21.00

### Charity Quiz Night

**Saturday 23<sup>rd</sup> November**

In aid of Birchanger Nursery

### Cat's Charity Race Night

**Saturday 30<sup>th</sup> November**  
In aid of Tommy's The Baby Charity

### Weekly Events:

Day	Event	When
Mondays	Quiz Night	21.00
Wednesdays	Steak Night	Evening
Thursdays	Bingo Night	20.30
Fridays	Bottle Draw	Evening
Saturdays	Meat Draw	13.00

### Club Opening Hours:

Mon/Tue: 17.30 - 23.00  
Wed/Thu: 12.00 - 15.00 & 17.30 - 23.00  
Fri/Sat: 12.00 - 23.30 / Sun: 12.00 - 22.30

### Restaurant Hours:

**Lunch:** Wed, Thu, Fri, Sat, Sun.  
**Evening:** Tue, Wed, Thu, Fri, Sat.

Birchanger Sports & Social Club, 229 Birchanger Lane, Birchanger, CM23 5QJ  
Tel: 01279 813441 Email: club@birchanger.com www.birchangerclub.com

# Birchanger Primary School

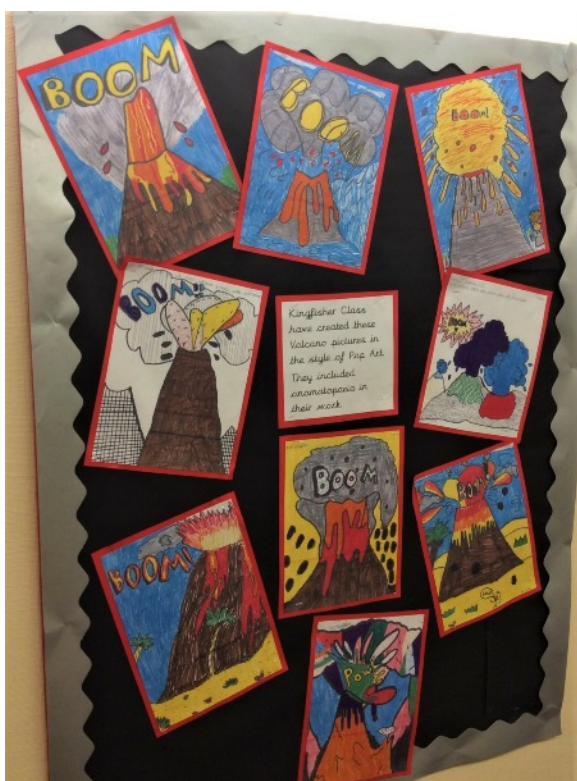


## Boom!

All our children are settled into their learning at school. In all classes, the school topic this term is 'Boom'! This combines learning about sound in science and in music with the geography of North America and volcanoes. The work on volcanoes has been particularly popular this half term. It has really caught the imagination of children which they have shown in the written work and the art that they have produced. Some of this colourful work is displayed in our entrance for everyone to see.

## Musical Inspiration

At the start of November we are going to focus on music starting with a visit from a string trio from Essex music services who are going to come and inspire us with their playing. This will build on the music that we already have in our school. We are very lucky to have a number of talented musicians in school who give 1 to 1 lessons on the violin, piano and guitar. Our Year 4/5 children already have ukulele lessons and our older children are getting ready to sing at the O2 Arena in January as part of a 'Young Voices' concert. We are going to bring all of this together at the end of November with a concert for families and any money that we raise from this concert will go towards subsidising a trip to the West End for KS2 to see 'The School of Rock'.



## Christmas Musical Events

Other musical events that we are planning include singing some carols at the Sports and Social club as part of the 'Birchanger lights up' event at the end of the month. We will also hold our annual Christingle service at the church where our whole school will be supported by our choir. We have a choir thanks to Ann (the church organist) who comes and plays for us each week in assembly. Music will also be an important part of our nativity performance which gives an opportunity for our youngest children to shine in their first public performance of the year. We shall be celebrating the end of term with a Christmas concert and we are teaching our children British sign language so that they can sign as well as sing.



By the end of this term we hope that our children will be ready to 'blow the roof off' with their musical talent and anyone is welcome to join us for any of these events. *Claire Berry - Headteacher*

## Are you interested in helping to shape the future of Birchanger Primary School?

We are looking for volunteers with a genuine commitment and desire to help support your village primary school. You would be working with a small group of dedicated volunteers and staff, who strive to improve outcomes for all our pupils.

At Birchanger School we combine the most current curriculum and initiatives, with traditional values and most importantly we understand how important the school is as part of the village community.

If you are over 18, enthusiastic about giving children the best start in education and especially if you have an education, legal, HR, or arts background, we would love to hear from you.

For more information about this fulfilling volunteer opportunity, please contact the Governors via the school on: 01279 812362 or email them at [admin@birchanger.essex.sch.uk](mailto:admin@birchanger.essex.sch.uk)





## Airport Planning Application should be afresh

That's the verdict of leading planning barrister Paul Stinchcombe QC in independent legal advice prepared for SSE. His full (25-page) legal opinion can be found at;  
<http://stopstanstedexpansion.com/press533.html>

The QC's opinion sets out the key precedents in planning law and confirms that Uttlesford District Council (UDC) is lawfully entitled to reconsider the entire Planning Application. Moreover, a number of new material factors have arisen since the Application was provisionally approved last year and so there is not only an entitlement for UDC to reconsider, but an obligation to do so.

The QC's advice explains that the new Planning Committee could quite lawfully and reasonably reach a different planning judgment from the former Committee who, by the slenderest of margins (the Chairman's additional casting vote), provisionally approved the Application last November.

The five members of the former Planning Committee who voted in favour of the expansion plans last year are no longer councillors, whereas the five who opposed it were all re-elected and all continue to serve on the Committee.

Importantly, the QC's advice also points out that UDC could support SSE's High Court challenge for the Planning Application to be treated as a Nationally Significant Infrastructure Project. If UDC supported SSE's challenge, there would be a greater prospect of success and if the case is won, the responsibility for dealing with the Application would automatically transfer to the Secretary of State for Transport thereby removing any risk of a costs award against UDC as well as the costs of a Public Inquiry.

SSE Chairman Peter Sanders commented: "We urge UDC to make representations to the High Court for this Planning Application to be dealt with at national level. There is compelling logic for UDC to do so, in the interests of local council taxpayers. However, if UDC continues to insist on dealing with the Application itself, the new Planning Committee must deal with the entire Application afresh." SSE legal challenge has been scheduled for a three day hearing in the High Court from 12-14 November. *Brian Ross*

## St Mary's Christmas Bazaar

**At The Church Hall**  
**Saturday 30<sup>th</sup> November 2.00pm to 4.00pm**

Lots of lovely gifts for sale including crystal glassware, plants, cosmetics etc cakes, toys, tombola and raffle.

Entry £1 includes tea/coffee and a mince pie



**Lift your Spirit**  
**Saturday 9<sup>th</sup> November 7.00pm**  
**The United Reformed Church, Water Lane**  
**Bishop's Stortford**



Come and join **The Harmonaires**, one of the region's most engaging choirs, for a recital concert filled with beautiful, uplifting, soul-enriching music. Featuring choral classics by Rutter, Chilcott and Gjeilo; music from gospel and folk traditions and spirit-raising arrangements of contemporary popular music, this is sure to be a stunning evening. A straight-through programme of just over an hour in support of the Catenian Bursary Fund for young people.

**TICKETS:** Adults £12 Students £6 Available online at [www.theharmonaireschoir.com](http://www.theharmonaireschoir.com) or call 07912 025 777.

The next Harmonaires Choir event will be carols and other Christmas music at St Joseph's Church, Bishop's Stortford on December 14<sup>th</sup>. More details can be found on the website.

*Elizabeth Jennings*



**Ballet, Tap, Modern & Jazz**

★★★★★  
**MITCHELL**  
**SCHOOL OF DANCE**

**NEW CLASSES**  
**St. John's Church Hall,**  
**Stansted Mountfitchet &**  
**St Mary's Church Hall, Birchanger**

Tel: 01763 271010  
 email: [buntingforddance@btinternet.com](mailto:buntingforddance@btinternet.com)  
[www.mitchellschoolofdance.co.uk](http://www.mitchellschoolofdance.co.uk)  
 Our new website page is being developed  
 Facebook Mitchell School of Dance

## New Dance School comes to town

Mitchell School of Dance, part of the Buntingford School of Dance is offering ballet lessons in the Village Church Hall every Tuesday.

Pre-primary ballet for 3-4 year olds is held from 3.55 to 4.25pm.

Primary Ballet for 5-7 year olds is held from 4.30 to 5.00pm.

Contact Philippa McMeekan on 01763 271010 to book, or for further information on their dance classes.



## The Hundred Parishes Society

This year our farmers celebrated the season of mellow fruitfulness with good crops of wheat while the hedgerows have been well-stocked with crab apples, sloes, rose hips and hawthorn berries. Folklore hints that masses of fruits foretell a harsh winter to come; in reality the favourable conditions last spring enabled the flower buds formed the previous summer to blossom.

Each year has its own unique pattern of weather with records of notable events. The spire of Finchingfield Church blew down during the great storm of February 1661. The inhabitants of Finchingfield suffered again as 16 barns were destroyed in the great storm of November 1703. The freezing conditions of the very cold winter of 1895 allowed the people of Saffron Walden to enjoy tobogganing by moonlight while folk in Dunmow held an ice carnival. There are many accounts of hot summers when wells ran dry or hail ruined crops.

Those who study long-term trends are concerned about the warming of the atmosphere, hotter summers and an increase in the frequency of storms which can cause serious flooding, damage to trees and property and loss of power.



In May the UK Government declared a Climate Emergency with ambitious plans to plant 50 million trees per year across the country to help soak up carbon. Current tree cover in the Hundred

Parishes is about 6% and any new trees will bring significant visual changes to its landscape. Trees produce timber, habitats for wildlife and reduce flooding risk. Groups of trees can modify the local climate by providing shade, cooling the air and making urban areas more attractive.

To ensure that this project is successful, consideration must be given to the location of plantings and the most appropriate species, with maintenance plans so that these new trees thrive.

*Tricia Moxey, Trustee [www.hundredparishes.org.uk](http://www.hundredparishes.org.uk)*

## Spread Some Kindness and Help Tackle Loneliness

Are you interested in making a real difference in your local community without dedicating huge amounts of time? With one in four Essex residents often or always feeling lonely, United in Kind, a new county-wide movement which aims to tackle loneliness and social isolation, needs your support.

By taking just a few minutes out of your day to take a neighbour's bin out, chat to a stranger at a bus stop or make time to call in on someone who lives alone nearby, you can make a big difference to how connected that person feels in their community.

Or if you have more time to spare, why not volunteer a couple of hours to help at one of the many community organisations, charities and groups who are already supporting Essex residents who feel lonely or isolated? It's time to re-connect and make everyone feel part of a kinder community. To find out how you can get involved

and to see what's happening in your community, please visit [www.unitedinkind.org.uk](http://www.unitedinkind.org.uk).

You can also share your stories of kindness and inspire others to follow your lead on social media by using #UnitedInKind.

Alternatively, log on to facebook at

<https://www.facebook.com/unitedinkind>

Email: [provide.unitedinkind@nhs.net](mailto:provide.unitedinkind@nhs.net)

**Together we can tackle loneliness with kindness. Start today!**

## THE FORGOTTEN GARDENS OF EASTON LODGE

By the time you read this we will have closed up the Gardens for the winter and tidied away the tables and chairs to protect them from whatever the winter throws at us!



What a season it has been. It started with record numbers of snowdrops in February during that amazing warm spell. The Gardens and our vegetables have been much appreciated

throughout the spring and summer. Most recently, the 'Apples & Bees Day' was our second busiest September open day. Despite the horrible weather forecast, visitors drove through pouring rain and arrived with us in sunshine and had a lovely day, before our luck ran out around 2.30! By the end of the day the number of visitors exceeded our best ever year and we are hoping for a busy October open day with the Ukes of Hazard to round off the season!

We have cleaned the lily pond, the stone steps have been restored, the mosaic tables look as good as new after cleaning and restoration and the far end of the walled kitchen garden is back in productive use. We have also returned Japanese features to the Gardens. The winter gives us time to recover and get onto new projects. We also offer talks about the Gardens through the closed season.

For more information or to keep up with our news go to our website: [www.eastonlodge.co.uk](http://www.eastonlodge.co.uk) Jill Goldsmith



**P. D. Tucker & P. Stapleton**

Hazel End Road, Hazel End, Bps Stortford, Herts CM23 1HB

**Tel: 01279 813429**

Mon-Sat: 12noon - 3pm & 6 - 11pm Sunday: 12noon - 3pm



## Village Services and Activities

Alzheimer	Marian	07803 115826
Art Studio & Gallery	Heather Brown	01279 815453
Art Studio & Gallery	Brian Gough	01279 815012
Ballroom Dance	Fred Winters	01763 271942
Ballet for kids	Philippa McMeechan	01763 271010
Birchanger Magazine	Peter Sampson	01279 813193
BAGS	Rosemary Wheatley	01279 814678
Birchanger Voices	Tony Wilson	01279 813007
Birchanger Nursery	Karen Reilly	01279 810800
Bird Food	Lesley Robins	01279 812248
Builders - Another Level	Matt Marks	01279 814273
BSSC Club	Kenny Gould	01279 813441
Chiropodist	Julie Golden	01279 873492
Car Service	D. Bonney	01279 813315
Dementia	Debbie Baker	07927 011345
Dance	Maxine Williams	07854 251528
Garden Services	GWB Horticulture	01799 543483
Hairdresser Men/Boys	Emma Marks	01279 814273
Line Dancing	Shelley	01279 864781
Laundrette	Ian Kennedy	01279 866183
Nail & Pedicure	Hien's Nails	01279 507019
Neighbourhood Watch	Peter Sampson	01279 813193
Over 60's club	Jean Camp	07843 707249
Painting & Décor	David Debnam	07973 861268
Parish Clerk	Keith Williams	01279 814773
Petals Children's Play	Hana Hainsby	07730 619522
Property Services	Mark Taylor	07941 357934
Public Safety	Peter Sampson	07817 904333
St. Mary's Church	Elaine Wright	01279 813474
Tai Chi	Mary Dann	07771 656063
The Three Horseshoes	Paul & Paula	01279 813429
The Three Willows	Mark Boden	01279 815913
Village Church Hall	Elaine Wright	01279 813474

## Village Church Hall



### Forthcoming Fundraising Events:

#### St Mary's Christmas Bazaar

Church Hall - Saturday 30th November 2.00pm to 4.00pm  
Entry £1 includes tea/coffee and a mince pie.

#### Epiphany Lunch at the Church Hall

Sunday 5th January 2020 at 1.00pm. Hot 2 course meal - £10 per person. Call Pam Lee on 07702171744 for details.

#### Family Prize Bingo Evening

Saturday 13th January 2020 - Church Hall 7.00pm.  
£10 per adult. £5 for children - Includes ploughman's supper.  
Wine and soft drinks available. To book, call Pam Lee on 07702171744.

**Tearoom:** Every Wednesday from 2.00pm to 4.00pm.

**For hall bookings please contact: Elaine Wright 01279 813474.**  
Email [stmaryschurch.birchanger@gmail.com](mailto:stmaryschurch.birchanger@gmail.com).

## St. Mary's Church News



### Church services

3rd November 11:15am Mattins service, All Souls day  
10th November 10:45am Remembrance service at the memorial  
17th November 11:15am Family Service  
24th November 11:15am Holy Communion; Christ the King

### Church News

This year from the 3rd November we will be placing the "There but not there" Perspex figures around the church to remember those who gave their lives for peace. We hope that you will come along to see them. The remembrance service will take place as usual at 10:45am at the memorial. The local scouts group will be attending. All are welcome.

All Saints' Day (also known as All Hallows' Day or Halloween) is the day after All Hallows' Eve (Hallowe'en). It is a feast day celebrated on 1st November by Anglicans and Roman Catholics. It is an opportunity for believers to remember all saints and martyrs, known and unknown, throughout Christian history.

All Souls' Day is marked on 2nd November (or the 3rd if the 2nd is a Sunday), directly following All Saints' Day, and is an opportunity for Roman Catholics and Anglo-Catholic churches to commemorate the faithful departed. On the 3rd November we will say a special prayer for those departed. For those who cannot attend the service and would like a loved one remembered please call us with their details: full name and when they departed. For those who will be attending, a list will be placed at the back of the church for you to place your departed's details. See below for contact details.

The 24th November is Christ the King Sunday which celebrates the full authority of Christ as King and Lord of the universe. Officially called "The Feast of Our Lord Jesus Christ the King," it is celebrated on the final Sunday of Ordinary Time, the Sunday before Advent.

On the 15th October £129 was raised during a coffee morning at Pim and Liz Godwin's house. 17 people attended and funds raised will go towards the upkeep of the village church. The next coffee morning will be on the 10th December and promises to be a bumper with Christmas goodies including mince pies!

### Dates for your diary

Yes the Christmas Bazaar is back! The Church hall 2 - 4pm 30th November, this will be a brilliant way to buy your Christmas presents. A mince pie and a cuppa awaits you with many stalls with new and luxury goods at reduced prices. Come and bag a bargain.

Our annual Carol Service by candlelight will be on Friday 20th December at 7pm. Come and help us through readings and carols, build the Nativity scene, and enjoy some mince pies and mulled wine afterwards. We hope you can join us!

### Prayer for November

*Almighty God, help me in these fleeting days that I may not use my time to consider and hesitate,  
but be positive in my desires and pursue them.  
Grant that I may have the strength to hold each day precious,  
and live it more than consistently. Amen.*

Can you help? We need some of your time! If you can help, please call me, Elaine Wright (Church Warden) on 01279 813474 or Email me at: [stmaryschurch.birchanger@gmail.com](mailto:stmaryschurch.birchanger@gmail.com)

## Village Church Hall



For further information and bookings contact;

Elaine Wright on 01279 813474  
stmaryschurch.birchanger@gmail.com

## THE THREE WILLOWS



Fine dining & good beers. Children and dogs welcome. Bookings: 01279 815913  
Monday to Friday: 12 to 3pm & 5 to 11pm  
Saturday: 12 to 11pm Sunday: 12 to 6pm

## Quality Wild Bird Food

Premium Wild Bird Table Mix  
Peanuts  
Sunflower Hearts  
Niger Seeds  
Fat Balls  
Suet Pellets  
Meal worms  
Feeders etc.

Email: villagebirdfood@gmail.com  
Tel: 01279812248 Mob: 07752672187  
Free Delivery in Birchanger & Stansted

## D. Bonney & Sons



**Motor Engineers**

MOT Testing - Servicing - Diagnostic  
Mechanical Repairs  
Selection of New and Used Cars

Yew Tree Corner, Manuden  
Ring Malc or Niel on  
01279 813315 or 01279 815946

## State Registered Chiropodist

Mrs. Julie Golden S.R.Ch.

Home Visiting Practice

Est 1994  
Tel: 01279 873492  
Mob: 07916075451  
Dunmow Road  
Takeley CM22 6SH

A

# ADVERTISE HERE

If you are reading this,  
so are your  
potential customers!  
Contact us for details.

## Painting & Decorating

Bring new life to your home



Interior - Exterior  
General  
Maintenance  
No job too small

**David Debnam**

Tel: 01279 815214 Mob: 07973861268



LAUNDERETTE

WE  
DO  
DUVETS  
DIVINELY  
AND CLOTHES TOO!

Open 7 days a week  
Hockerill lights, Bishop's Stortford  
Large car park Tel: 01279 866183

# m mediacomms

## Aerial Satellite AV Security

- Aerial Installations
- Sky Installations & Subscriptions
- CCTV & Security Alarms
- Freesat Installations & Receivers
- Audio Visual Installations
- Multiroom Music & TV Distribution
- Wireless & Wired Networks
- TV Wall Mounting Services
- Family Run Business



01279 656 983 - 0800 587 2556

Unit 1, Suite 1 Peak Business Centre, Woodside Industrial Estate, Bishop's Stortford CM23 5RG

## Wireless Security

Intruder alarms



Intruder alarms have never been so  
simple to install,  
operate, maintain and clean.

Mediacoms uses the latest  
technology to keep you & your  
property secure.

YOUR HOME AND COMMERCIAL SECURITY INSTALLER  
ALARMS CCTV DOOR ENTRY GATE AUTOMATION

www.mediacomms.co.uk

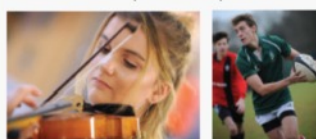
info@mediacomms.co.uk



**Saffron Walden  
County High School**

## Sixth Form Open Evening

Thursday 7th November 2019  
6.00pm - 9.00pm  
Presentations 6.15pm and 7.15pm



"Joining the Sixth Form was one of the best decisions I ever made. It brought out the best in me."



**Friendly, Professional & Reliable  
Sustainable Garden Services Provider  
Gardening, Landscapes & Tree Works**

Tel: 01799 543483 Mob: 07866 752713

One off Garden Tidies	Regular Garden Maintenance
Hard & Soft Landscaping	Tree Pruning, Felling & Reductions
Hedge Cutting & Trimming	Fencing & Timber Structures
Advice & Planning	Traditional Countryside Crafts
Planting and Plant Sourcing	Leaf & Snow Clearance
Log Splitter & Operator Hire	Soil, Log & Aggregate Delivery
Chipper & Operator Hire	

Free No Obligation Quotes  
[www.gwbhorticulture.co.uk](http://www.gwbhorticulture.co.uk)

The Birchanger Village Magazine is published on behalf of the people of Birchanger and distributed free to 450 households in Birchanger. The views expressed herein do not necessarily reflect those of the editor, the magazine or any organisations or institutions represented. Material sent to the editor will generally be printed as received providing it is considered suitable by the magazine team. The editor reserves the right to edit content if considered unsuitable or where insufficient space is available. All material should be submitted by the 16th of the month to be published the following month.

**Printers:** Keeley & Lowe Tel: 020 7729 3350 - Email: [info@keeleylowe.com](mailto:info@keeleylowe.com)

**Editor:** Peter Sampson Tel: 01279 813193, Email: [magazine@birchanger.com](mailto:magazine@birchanger.com)

**Chairman:** Elizabeth Godwin.

**Treasurer:** Ken Wheatley.