



Birchanger Village Magazine

September 2019

Issue 200



Magazine reaches 200 issues

By Elizabeth Godwin (Chairman)

Until our editor told me, I had no idea that our Birchanger Village Magazine reached 200 editions this month. The original magazine, which was first published in 1996, was the brainchild of Elizabeth Jennings who was the church rector's secretary at the time. She also wrote the Benefice Magazine and was happy to have a go at producing the four page offering that we started with.

Things moved on from there. Volunteers were found to distribute the magazine and a magazine support committee was appointed. A benevolent Birchanger resident offered to print the publication at a very low cost and local 'reporters' started to send in news copy, photos and information. They all contributed to the magazine in various ways, shaping it into the 12 page magazine you see today. Funding however was (still is) always a problem. An advertising team set out to persuade local businesses to advertise with us. The contributions and voluntary donations from them and other individuals have kept us going ever since. We are very grateful for their support, as without them Birchanger Magazine could not exist. The magazine was handed over to Eddie Gilbey in 2003 when Elizabeth Jennings left Birchanger for Stansted.

Over the years, we have had many amateur contributors reporting on news, events and notices about Birchanger with all manner of different writing abilities. They have all volunteered their time and have done a great job keeping the magazine alive. We have celebrated so many otherwise unsung heroes, kept residents up to date on issues which might affect them, advertised and reported local events and tried to reflect and report on anything which could have an impact on Birchanger without forgetting the fun and the celebrations in the village. Thank you for supporting us. With your help we will hopefully be able to produce another 200 editions!

Magazine July 1996



Magazine January 2003



Archive Photos over the years



See more on page 2



Editors Letter Box

Dear Ed,

Cricket for Dementia 1st September

Thank you so much for kindly agreeing to include information about the upcoming T20 Dementia Cricket Game in the Birchanger Village Magazine. The game will be held at the sports and social club on Sunday 1st September. Birchanger Sports and Social Club was first established in 1891 and started playing cricket on its grounds in 1895.

The club has always supported its residents and sports players who have represented their local village, and today is a celebration of that. Many of the club's players, friends and families have been affected by dementia and Birchanger Cricket Club wanted to highlight the nature of this disease and its effects on those closest, by putting on a T20 Dementia Cricket Game.

The purpose of this game is to highlight the incredible selfless work of local community volunteer groups who support families affected by dementia and also highlight the positive nature that physical activity can have on those with the disease.

Organisers of this event would like to say a personal thank you to the volunteers and workers at CVSU and Birchanger Cricket Club for supporting our local community for so long and all the friends and families who will make this day special. Once again thank you so much for your support, we are extremely grateful for the feature (see page 8).

Best Regards, Aga Korfel, Community Programmes Lead, Council for Voluntary Service Uttlesford

Magazine 200th Edition

By Eddie Gilbey (Editor 2003-2015)

It has been a while since I relinquished the editorship of our village magazine, so it's time I contributed something. The current Birchanger Village Magazine was established in 2003 after the original 'Birchanger Magazine' ceased publication. There was clearly a desire to continue publishing something that focused just on Birchanger and as editor that's just what I did.

The first issue (January 2003) was fortunate in that it reported the installation of the village sign with a selection of photos. The installation was not without controversy. Andrew Spurr, our rector of the day, was critical of it as it included an image of St Mary's church. He felt it was too "pastoral" with images of a fox, a pheasant, and the church which he thought was under attended. I pointed out that the church had been here longer than any of us and the fox and pheasant were seen in the village more often than he was. He hasn't spoken to me since then! In March 2004 I had the sad duty to report on the murder of Ben Hardwidge that occurred in Duck End at the same time as the monthly editorial meeting. The perpetrator was caught later that same night and eventually sentenced to eight years but he was released long before that.

Over the years I managed to ruffle a few other feathers. For example, in issue 94, I suggested that East Herts Council had designs on placing their excess housing requirements in the village. I decided to publish a doctored photo of Hitler and various generals looking over a map of Birchanger Wood.

I also upset the primary school with a road safety article criticising some of the pupils' cycling proficiency!

One Christmas the Essex Air Ambulance landed on the club field to take an old lady to hospital. Sadly she did not survive. I received a phone call from a bereaved relative where I was invited to "Rot in Hell" for reporting it.

More recently, I upset Birchanger Sports and Social Club Committee for suggesting the membership and committee were divided on the acquisition of a climbing frame for the Club lawn.

Most of my content was drawn either from the village archive or from observations of events and changes in the village. Elizabeth Godwin supplied most of the news and still has a column in today's publication.

I stepped down as editor in August 2015 after 16 years and 152 issues, handing over to Tom Granger who then passed it on in 2016 to the current editor, Peter Sampson, so I never had the chance to comment on vexatious matters like the traveller invasion, Brexit, or the controversial A120 roundabout junction change. That is now someone else's job!

Don't forget, your magazine is only as good as the content it receives, so please keep sending me your news, views, notices, concerns and complaints. Advertisers are also welcome. All copy should be submitted by the 16th of the month, preferably sooner and may be edited depending on space and content. Please contact me by E-mail, phone, or letter as shown below. Thank you and Kind Regards,

Join us on Facebook: www.facebook.com/birchanger/

Peter Sampson



magazine@birchanger.com



01279 813193



2 Harrisons, Birchanger

VILLAGE NEWS

By Elizabeth Godwin

Dementia Cricket Match at Birchanger Club

Please come along and support dementia sufferers and their families at the Dementia Cricket Match which will be held on the Birchanger Sports and Social Club's cricket pitch on 1st September at 12.30pm. This will not only underline awareness of what dementia means to sufferers and carers, it will also provide an afternoon out and perhaps raise additional funds for further events and help towards the care and treatment for dementia.

Has Our Library Service Been Saved?

The chances are that it has been, although the format and visiting times may change. Last year Essex County Council threatened to close libraries and to stop the mobile service for outlying villages. This brought howls of protest which resulted in petitions and marches to county hall. This has made ECC rethink what they were planning to do. Instead of closures there will be new ways of working, plans for improvement and new ideas. The service will be updated and flexibly managed, whatever that might mean. Instead of closures there will be more outreach. Opening hours will be changed to suit library users and there will be wider use of smart technology. That is the promise, now we await the delivery. In the meantime we will stay as we are for a year at least while possible new delivery methods are worked out.

Remember You Need Breakfast

We have all been told that skipping breakfast is very bad for us but the serious bit is that missing breakfast regularly is an open invitation to such issues as obesity and diabetes as we inevitably grab something unsuitable when hunger strikes later in the day. Many schools recognise the problem. Teachers can tell just by looking who has missed breakfast, so breakfast clubs have been set up in many schools. Not many of us can claim to have an employer who does this and most of us just grab an over sweet coffee and croissant to eat on the journey into work and wonder why the pounds pile on. Give yourself an extra 10 minutes in the morning and eat a healthy breakfast. You will soon feel the benefit and find you will be better prepared for a busy day.

Do You Floss?

Not enough of us do apparently as we all believe that simply brushing our teeth is enough. I might have to think differently after a lecture from the dentist recently. Apparently the bacteria between

your teeth are very harmful, particularly if they manage to get into the blood stream where it can increase the risk of heart disease, stroke, cancer or premature birth to name a few. Plaque also weakens teeth and can lead to them falling out. We are supposed to floss once a day to prevent this. Not everyone seems to have got the message. I went to a chemist after my lecture to try and obtain some flossing equipment. The assistant had to search hard for it and then I am not sure it was the right stuff!

Have You a Garden Shed You Don't Need?

If so, Birchanger School would love to hear from you. The school is now under instruction by the School Council to take recycling very seriously. They have a wide reaching recycling project but urgently need somewhere to store their recycling material until it can be taken to the tip. Maybe your old shed is just what they need. If you do have a shed to spare please call the school on 01279 812362.

Cashless Parking Payment Comes to Uttlesford

This works together with your mobile phone and is not so easy to follow at first. The simplest method to pay is by text message, however, you will need to use your credit card every time you use this method.



To register, go online to MiPermit (authorised by UDC) and follow the instructions. There will be further instructions to follow the first time you park and you will need your credit card. After that you parking should become much easier and your credit card should be unnecessary. At least

that is the intention. Parking wardens are informed which cars have been paid for and how long they have paid to park. That is the theory, yet to be tested. It all sounds a bit complicated to me!

Children learn from Example

A few days ago whilst walking down Birchanger Lane, I saw an elderly man pick up a piece of litter from his carefully mown lawn and place it in the gutter for someone else to pick up! If so called 'sensible' citizens behave like this, how can we tell the children it is wrong? Surely our older citizens know better? It is hard to reconcile the fact that our litter volunteers go out every month to clear up the rubbish in our village, while other people are behaving like this. Big thanks to the Birchanger Pickers; they at least do a great job.

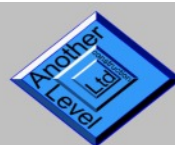
Birchanger All Girls Society

The 'BAGS' invite woman of all ages to join them on the last Wednesday of every month in the village church hall

Forthcoming Meetings:

Wednesday 25th September 2019 7.30 for 8.00 pm
An interesting talk led by an art historian

Telephone for details
Olivia: 07568 574703 Rosemary: 01279 814678



ANOTHER LEVEL
CONSTRUCTION Ltd
Don't just buildcreate!

- New Build
- Extensions
- Conversions
- Renovations
- Roofing
- Brickwork
- Plastering
- And more



TELEPHONE 01279 814 273 MOBILE 07710 099 284



info@anotherlevelconstruction.co.uk

www.anotherlevelconstruction.co.uk

Time to Start Thinking About the Big Light Up

Christmas may be a bit of a scary prospect to face just after the holidays and before the weather has started to get cold, but it is not so very far away. The big Birchanger Light Up is set to happen on Saturday November 29th at the social club. More details will follow but let's make it even better than it was last year. Plan, then enjoy.

UDC Multi Agency Road Show

This Road Show has never yet made it to Birchanger, but for those in need of any advice, this is a useful event. The next one which is quite near to us will be held on September 3rd from 10.00 am at Beech Close, Takeley, CM22 6RQ. At this event you can get advice on housing, debt, eviction, and support with health matters, training available locally and much more.

Brexit Worries

As October 31st looms closer, with the prospect of leaving the EU without a deal becoming increasingly likely, most are concerned about just how this will affect them. This is especially worrying for those running small businesses, EU nationals who live and work in the UK and those UK citizens who have homes or live in the EU on a permanent basis to name a few.

Uttlesford District Council has a website which is regularly updated and which will become increasingly vital as the date grows nearer and more information becomes available. Many of your questions will be answered there. There is a wealth of information on the website already and it is well worth a look. Log on to: uttlesford.gov.uk/article/6050.

Fancy Meeting a Lion?

And a 207 year old one at that! Wallace the lion has taken up residence again at Saffron Walden Museum. Born in Edinburgh in 1812, Wallace was one of the first lions to be bred in the UK. His career was not exactly ideal as somehow Wallace found himself in the ownership of a man who had a touring menagerie. Wallace's



role in this was to fight off dogs that were sent into the cage to taunt him while men bet on who the winner would be.

Despite this despicable treatment, Wallace lived for 26 years and must have been appreciated as

he was sent by stage coach to Saffron Walden museum, where he was stuffed with sawdust and put on display. Reorganisation of the museum in the 1960s meant that Wallace was nearly chucked out, but mercifully went into storage instead. Newly resurrected Wallace has returned to the museum and is on display once more. Perhaps this is your only chance to see a lion close up?

Founded: 1957

www.walksaroundstortford.org.uk

Registered Charity No: 1068733

**Bishop's Stortford & District Footpath Association**

Safeguarding your Public Rights of Way in and around Bishop's Stortford

Sunday Walks Departing at 10.00am 5/6 miles

01 Sept 2019 St Cecelia Church, Church End, Little Hadham
TL 446227, Postcode SG11 2DZ
29 Sept 2019 Matching Green, Park on Road Nr Chequers PH
TL 536110, Postcode CM170PZ
13 Oct 2019 Stanstead Abbots Car Park (off Main Road)
TL 384119, Postcode SG12 8AG



Photograph – Spindle Berries

Don't forget to check our website, as there may always be a surprise walk listed. Also, watch out and check for road closures and build in your 'get-to' timings accordingly! Have a lovely summer, dodge the showers, enjoy the sun and see you on the 1st September at Little Hadham.

Daphne Wallace-Jarvis, Publicity Officer:

dwwjwj.444@gmail.com www.walksaroundstortford.org.uk

Birchanger Summer

Fete

RAFFLE

Face-painting

PONY RIDES

Tombola

HOGROAST & BBQ

Dog Show

Children's Rides

Live music from THE BIG CHEESE

Plus lots more.....

Saturday 7th September

1.00pm



Emma Marks Men and Boy's Haircuts

Tel: 01279 814273
Mob: 07527227943

99 Birchanger Lane,
Birchanger,
Herts.
CM23 5QF

TAYLOR PROPERTY SERVICES



FENCING
BOUNDARY HEDGE PLANTING
EXTERNAL PROPERTY MAINTENANCE
GUTTERING
LANDSCAPING
PATIOS AND DRIVEWAYS
GARDEN CLEARANCE
FLINT WALL REPAIRS

mark.taylor@taylorsvcs.net
taylorpropertysvcs.com
07941 357934



Action Fraud has received 63 reports about a scam in which fraudsters target people with offers of “low cost” loans or “free” government grants. What the victims aren’t told is that the money they’ll receive is actually an advance payment for Universal Credit. The criminals use the personal information they’ve obtained under false pretences to make an application

in the victim’s name. After the fraudsters have taken their “fee” from the advance payment, the victim is then left to pay back the total amount once their repayments begin.

How you can protect yourself:

- Never share your personal or financial information with someone you don’t know and trust, especially if it’s in response to an offer of “free money” or a “free grant”.
- Department for Work & Pensions (DWP) staff will never approach you in the street or ask for your personal/financial details over social media.
- If you have concerns about your benefits, you should visit www.gov.uk/contact-jobcentre-plus
- If you suspect your identity may have been stolen, you can check your credit rating quickly and easily online. You should do this every few months anyway, using a reputable service provider and following up on any unexpected or suspicious results.

Fraudsters Targeting Social Media Influencers

The National Fraud Intelligence Bureau has received intelligence to suggest that fraudsters are contacting social media influencers, based in the UK and abroad, offering them the opportunity to market a bogus product, service or investment opportunity.

Fraudsters will present professional and credible pitches to the social media influencers and try to convince them to feature the opportunity for a fee on their social media profiles in order to entice unsuspecting followers of the influencer to sign up or make a purchase.

Additionally, fraudsters are using the names of well-known public figures, implying that their opportunity or product is endorsed by the figure when it is not.

The public should be aware that any apparent endorsement by celebrities, influencers or personalities does not necessarily mean that an investment, product or service is genuine. The public is urged to exercise a cautious approach to any such offer of investment, product or service with the same caution they would at any other time.

What You Need To Do

- If you are purchasing goods from a company you don’t know and trust, carry out some research first, or ask friends or family for advice before completing a purchase.
- Professional-looking websites, adverts or social media posts do not guarantee that an investment opportunity or product is genuine. Criminals can exploit the names of well-known brands or individuals to make them appear legitimate.
- Avoid paying for goods or services by bank transfer unless you know and trust the person or company. Payments via bank transfer offer you no protection if you become a victim of fraud. Instead, use your credit card or payment services such as PayPal as they offer you greater protection if you become a victim of fraud.



U3A Stansted

Our next meeting will take place on Thursday 19th September. Doors open at 1.30pm for the meeting at 2.00pm at St John’s Church Hall, Stansted. Parking restrictions will be lifted in St John’s Road between 1.00pm and 4.00pm, where Dudley Chignall will be giving a talk on Beatrix Potter’s Illustrations and her inspirations from the Lake District.

There are lots of groups for you if you like walking with a purpose. The Walking and Appreciating Nature Group recently walked from Wickham Hall to Farnham and back. A small band from the Bus Pass Group is going to Royston market for market day, using the Busway bus. Last month they walked from Ware to Hertford along the River Lea, (see photo) seeing lots of wildlife on the way. The Gardening Group have also had an outing to Capel Manor Garden in Enfield, to admire the acres of garden there and our Art Appreciation Group will soon be visiting Hatfield Forest for inspirations on forest art.



Bus Pass Group July

Diary dates: Tickets are now on sale for the U3A Singers Concert on 5th October. Adults £8 and £4 for children. Tickets can be obtained from our website or by telephoning the number below. Don’t miss our special astronomy seminar ‘An Introduction to the Milky Way’ on October 7th starting at 7.30pm in the Day Centre. Tickets £4.50, please see our website or phone the number below.

A big date for your diary is our open day on October 17th. Do come and meet us on our 10th Anniversary when we will be showcasing our group activities in St John’s Church from 1.30 to 4.00pm. Free refreshments and all visitors are welcome. Please pick up one of our activity leaflets which you will find in various venues in the village,

Eileen Quinn - Stansted Mountfitchet U3A - Tel: 07874 385541 - www.u3asites.org.uk/stansted

Children Have Issues with Mental Health As Well

At one time nobody ever thought that this was possible, but with the numerous school tests and pressures on children to get good results, unnecessary stress can start at an early age. Children react to this in different ways and sometimes they need more than just parental help. Having children around more in the holidays means that parents and carers have the opportunity to see just how their children are and parents may pick up that there may be something wrong but are not sure where to go for advice. Sometimes it is best to visit your GP or talk to the class teacher, but general advice can be found on line at MindEd which is a website which gives advice on this issue based in Cambridgeshire.

What's on in the village...

		September 2019				
Mon	Tue	Wed	Thu	Fri	Sat	Sun
Bin Collections: Bradley Common collected on Fridays. Rest of Birchanger on Thursdays. Garden bin collections marked with #						
Birchanger Parish Council Meetings: Meets on the first Tuesday of each month at 7.30 pm in the church hall - Open to the public.						
30 Church hall: 11.00 Petal Senses 19.30 Adult Ballroom and Latin Dance BSSC: Quiz Night				T20 Dementia Cricket Game BSSC Cricket Field: Sunday 1st September 12.30pm for 13.00 + BBQ & Raffle		1 St Mary's Church: 11.15 am Matins Church Hall: 12.00 Birchanger Litter Pickers Volunteers
2 Church hall: 11.00 Petal Senses 19.30 Adult Ballroom and Latin Dance BSSC: Quiz Night	3 Church hall: 9.40 Ballet for adults 13.00 Petals Baby Yoga 15.45 Ballet for Juniors	4 Church hall: 09.30 Tai Chi 14.00 Tea Room 15.45 Fencing 17.30 Apton Dance Studio 19.00 Apton dance for Beginners	5 Black Bin # Church hall: 10.00 Alzheimer's 12.30 Line dance for beginners 13.45 Line dance 18.00 Apton dance - private lessons	6 Church hall: 9.30 Baby Glows for toddlers BSSC: Bottle Draw	7 BSSC: 13.00 Birchanger Fete & the Big Cheese in the Tent 21.00 The Big Cheese - LIVE	8 St Mary's Church: 11.15 am Holy Communion
9 Church hall: 11.00 Petal Senses 19.30 Adult Ballroom and Latin BSSC: Quiz Night	10 Church hall: 9.40 Ballet for adults 13.00 Petals Baby Yoga 15.45 Ballet for Juniors.	11 Church hall: 09.30 Tai Chi 1 14.00 Tea Room 15.45 Fencing 17.30 Apton Dance Studio 19.00 Apton dance for Beginners	12 Green Bin Church hall: 10.00 Alzheimer's 12.30 Line dance for beginners 13.45 Line dance 18.00 Apton dance - private lessons	13 Church hall: 9.30 Baby Glows for toddlers BSSC: Treasure Chest	14 BSSC: 13.00 Meat draw	15 St Mary's Church: 11.15 Family Service
16 Church hall: 11.00 Petal Senses 19.30 Adult Ballroom and Latin Dance BSSC: Quiz Night	17 Church hall: 9.40 Ballet for adults 13.00 Petals Baby Yoga 15.45 Ballet for Juniors	18 Church hall: 09.30 Tai Chi 14.00 Tea Room 15.45 Fencing 17.30 Apton Dance Studio. 19.00 for beginners	19 Black Bin # Church hall: 10.00 Alzheimer's 12.30 Line dance for beginners 13.45 Line dance 18.00 Apton dance - private lessons	20 Church hall: 9.30 Baby Glows for toddlers BSSC: Bottle Draw	21 BSSC: 13.00 Meat draw	22 St Mary's Church: 11.15 Matins
23 Church hall: 11.00 Petal Senses 19.30 Adult Ballroom and Latin Dance BSSC: Quiz Night	24 Church hall: 9.40 Ballet for adults 13.00 Petals Baby Yoga 15.45 Ballet for Juniors	25 Church hall: 09.30 Tai Chi 14.00 Tea Room 15.45 Fencing 17.30 Apton Dance Studio. 19.00 for beginners 19.30 BAGS	26 Green Bin Church hall: 10.00 Alzheimer's 12.30 Line dance for beginners 13.45 Line dance 18.00 Apton dance - private lessons	27 Church hall: 9.30 Baby Glows for toddlers BSSC: Treasure Chest	28 BSSC: 13.00 Meat draw 21.00 Main Offender Band - LIVE	29 St Mary's Church: 11.15 Harvest Service Communion

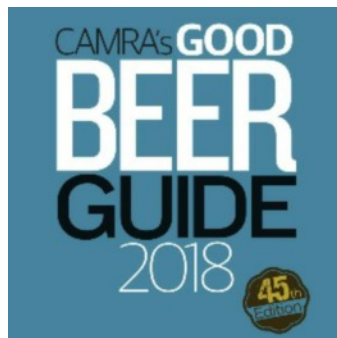


BIRCHANGER
Sports & Social Club

Sports & Social Club News



Live Entertainment - Great Food - Excellent Bar - Snooker - Darts - Pool - Football - Cricket - Bowls



Treasure Chest

Try your luck and pick the right key,
you could win £ thousands!

Fri. 13th & 27th Sept.



Kitchen Re-launch Exciting New Menu!

Birchanger Club are proud to announce their
brand new menu
For further details and bookings please call the
club on
01279 813441

Birchanger Summer Fete

Saturday 7th September 1.00pm

We still have pitches available for Craft and
Produce stalls.

Please contact Evan for more details.
evanhill@hotmail.co.uk

Registration for the Dog Show on the day

LIVE at the Fete 7th September at 13.00 and 21.00



Playing Here
28th September
LIVE at 9.00pm

Club Calendar at a Glance

Sun 1 st Sept.	T20 Dementia Cricket Game 1.00pm
Fri 6 th Sept.	Bottle Draw
Sat 7 th Sept.	Birchanger Fete
Sat 7 th Sept.	Big Cheese LIVE 1.00pm & 9.00pm
Fri 13 th Sept.	Treasure Chest
Fri 20 th Sept.	Bottle Draw
Fri 27 th Sept.	Treasure Chest
Sat 28 th Sept.	Main Offender LIVE 9.00pm

Weekly Events:

Day	Event	When
Mondays	Quiz Night	21.00
Thursdays	Bingo Night	20.00
Fridays	Bottle Draw	Evening
Saturdays	Meat Draw	13.00

Club Opening Hours:

Mon/Tue: 17.30 - 23.00
Wed/Thu: 12.00 - 15.00 & 17.30 - 23.00
Fri/Sat: 12.00 - 23.30 / Sun: 12.00 - 22.30

Restaurant Hours:

Lunch: Wed, Thu, Fri, Sat, Sun.
Evening: Tue, Wed, Thu, Fri, Sat.

Birchanger Sports & Social Club, 229 Birchanger Lane, Birchanger, CM23 5QJ
Tel: 01279 813441 Email: club@birchanger.com www.birchangerclub.com

Birchanger Cricket Club Brings You **T20 Dementia Cricket Game**



Sunday 1st September
12.30 for 1.00pm game start
Birchanger Cricket Club CM23 5QJ

Many club players, friends and families have been affected by dementia and Birchanger Cricket Club wanted to highlight the nature of this disease and its effect on those closest by putting on a T20 dementia cricket game.

Please come and join us for an afternoon of cricket followed by a fundraising BBQ and raffle. All are welcome.

The event is free to attend, all donations collected will go towards Dunmow Dementia Cafe and setting up dementia activities in our area.

Kemi Badenoch MP Supports Calls to Improve Mobile Phone Coverage

Kemi Badenoch, the Member of Parliament for Saffron Walden, has supported a proposal which would improve mobile coverage in rural areas. The plans proposed by mobile operators would mean allowing access to each other's masts on a reciprocal basis to improve competition in the countryside, creating a 'Shared Rural Network'. Mrs Badenoch stated:

"Improving infrastructure in communities across our constituency has been a priority since my election".

"A 'Shared Rural Network' would vastly increase operational coverage for many constituents at home and at work, especially for those in the rural parts of our constituency".

"Improving digital connectivity would also mean local businesses could thrive, helping to grow the local and regional economy".

"These proposals provide an efficient and effective solution to tackling the blight of poor connectivity."



Kemi Badenoch is one of a group of 78 cross-party MPs representing rural constituencies who have signed the letter to the Secretary of State for Digital, Culture, Media and Sport, Jeremy Wright. The letter asks him to support the initiative which would

significantly improve rural coverage and enhance economic, educational and leisure opportunities in rural areas where, in some cases, there is no coverage at all.

The four Mobile Network Operators (MNOs) put forward a proposal for a 'Shared Rural Network' after the MPs called on the Secretary of State to impose compulsory roaming between providers if the industry did not come up with its own solution. In the letter they say:

"Whilst we have previously written to you in support of roaming, we see industry's proposal for a Shared Rural Network as potentially another effective way of extending mobile coverage and believe it should replace Ofcom's coverage proposals because, in part, it has the support of all four MNOs. We also see the ask of £620m from the Government to build these masts as better value for taxpayers' money, when you take into consideration the potential £800m discount Ofcom had planned to offer just two operators at the next auction and would instead urge Government to invest that discount in improving coverage."

The MPs are also supporting the industry's call for the reform of Permitted Development Rights to allow for taller masts, equivalence in policy with fixed broadband such as business rates relief in line with those for new fixed fibre networks and also better access to public sector sites and land.



Are you living or caring for someone affected by Dementia?

Join us every week for companionship, support, activities occasional speakers, information & advice.

DEMENTIA CAFE

NEW TIME!

When: 10am - 12am, Fridays (starting from 16th August 2019)
Where: The Garden Room, Hill St, Saffron Walden, CB10 1EH

To find out more call
01799 510525
volunteer@volunteeruttlesford.org.uk







Gordon Blue Restaurant Review

Last month I thought I would return to the Cock at Henham to see if the food was as good as it was on my visit last year, and if anything it was better. Well, I have to say, the specials were even more scrumptious, and every dish came with a multiple choice of potatoes, with interesting and different vegetables appropriate to the dish. The pork dishes were particularly good. Fish on offer included sea bass, salmon and prawns as well as classic fish and chips. There were a

variety of steaks, chicken dishes, and good sized burgers.



The cooking is definitely more refined than on my last visit, prices are around average for good pub grub, and the staff are able to cater for most dietary

requirements. The day was warm and sunny during my visit, so more than half of the customers chose to eat in the garden. In winter there is a large open fire and plenty of seating for everyone. The food will suit all tastes. Classic pub grub of a high standard is there, along with some very special cooked to order food. It's well worth a try.

Elizabeth Godwin



Climate Change: Deeds Must Now Match The Words



On the 30th July, Uttlesford District Council declared a climate emergency and committed to achieving net zero carbon status by 2030. SSE has now challenged the Council to convert words into deeds by making clear that it will not support further expansion at Stansted Airport.

Aviation is the fastest growing contributor to global climate change and Stansted Airport is the largest single source of carbon dioxide (CO₂) emissions in the East of England.

If the current planning application for 43 million passengers per annum (mppa) were to be approved, Stansted would be responsible for the equivalent of 4.9 million tonnes of CO₂ – the same amount as produced annually by around two million average family cars.



SSE Chairman Peter Sanders has called upon all UDC councillors to demonstrate their commitment to tackling climate change, saying as follows:

"It is now time to convert words into actions. The Council's declaration of a climate emergency would be a hollow gesture if it were now to approve the expansion of the airport to 43mppa, almost equivalent to today's Gatwick." Mr Sanders concluded: "The need to tackle climate change is an urgent challenge which transcends politics and we owe it to our children and grandchildren to do everything in our power to prevent a climate emergency becoming a climate disaster. Our local council now needs to rise to this historic challenge. We very much hope that on an issue as important as this for future generations, councillors will agree with SSE that reducing the adverse environmental impacts of aircraft carbon emissions is now a high priority matter and the right thing to do. History will remember those who fight for what they believe to be right long after it has forgotten those who gave way on such a vital issue."

Brian Ross

m mediacomms

Aerial | Satellite | AV | Security

- Aerial Installations
- Sky Installations & Subscriptions
- CCTV & Security Alarms
- Freesat Installations & Receivers
- Audio Visual Installations
- Multiroom Music & TV Distribution
- Wireless & Wired Networks
- TV Wall Mounting Services
- Family Run Business



01279 656 983 - 0800 587 2556

Unit 1, Suite 1 Peak Business Centre, Woodside Industrial Estate, Bishops Stortford CM23 5RG

Wireless Security
Intruder alarms



**Intruder alarms have never been so
simple to install,
operate, maintain and clean.**

**Mediacoms uses the latest
technology to keep you & your
property secure.**

YOUR HOME AND COMMERCIAL SECURITY INSTALLER
ALARMS CCTV DOOR ENTRY GATE AUTOMATION

www.mediacomms.co.uk

info@mediacomms.co.uk



The Hundred Parishes Society

Almost every parish within the Hundred Parishes has a church of great antiquity. Each one is different. The most notable external feature is often the tower, erected originally to house a bell or set of bells, raised high so their sound would travel above the surrounding rooftops to summon parishioners to prayer or for a special occasion. Almost all our church towers are square with just two being round: Bardfield Saling and Bartlow.

Some churches have a spire, usually extending upwards from the square tower base and tapering to a point. The combination of tower and spire may be called a steeple. The shapes of spires vary greatly; tall and thin styles are often referred to as 'Hertfordshire spikes' although they are not confined to Hertfordshire. The tallest local steeples are at Saffron Walden (193 feet) and Thaxted (181 feet).



Wareside Church with octagonal bell tower

A few churches have a bellcote, where one or two bells hang in a small frame above one end of the roof. Several of these were erected to replace a collapsed bell tower. Wimbish seems to be our only parish church with no tower, spire or bellcote, following the demolition of its tower in 1883. A few churches have unusual towers or spires including Little Dunmow's separate thin turret, Wareside's octagonal bell tower and High Wych's thin circular spire. The spires of two churches in adjacent parishes, Ickleton and Hinxton, each have a 'sanctus' bell, high up on the outside of the spire - an uncommon design feature.



Sawbridgworth St. Mary's with Hertfordshire spike

Next time you are out and about, please keep an eye open for the rich variety of local church architecture. A picture of each parish church appears amongst the thousand photos in the Society's book, *The Hundred Parishes: An Introduction*, available in tourist information centres and libraries

Ken McDonald, Secretary - www.hundredparishes.org.uk

THE FORGOTTEN GARDENS OF EASTON LODGE

What a year we've had so far, with warm sunshine in February, a heatwave in July and then a little rain. Our visitors have really enjoyed seeing changes to the Gardens. The walled kitchen garden is in full production and our visitors have snapped up our vegetables. It has also been a good year for butterflies so far, with white admirals spotted for the first time and peacocks hatching out in large numbers. We will find out on 6th September how the bats are faring. Steve and Frances, from Essex Bat Group, will be leading a bat walk with detectors in the Gardens. Start time 7.30pm – why not join us? £1 donation.

We know that our bees have not been very happy, they have been enjoying the lavender but they have made little honey and there are only a few of them. Michelle, our beekeeper, will be at the Gardens for our Apple and Bees Day on Sunday 22nd September and will be able to answer all your questions about why it might have been a hard year for the bees. We will also be joined by apple experts, including those from Crossing Temple Barns, and we will be juicing and tasting the fruits of the Gardens. Bishop's Stortford Ukelele Society will be strumming away and as usual there will be free children's activities. Gates open 11.30am to 5.00pm, last entry 4.00pm – entry price £4.50 and free for children under 16 years old. There will be hot and cold refreshments including locally sourced bacon rolls, cheese rolls, hot and cold drinks and our usual wide selection of homemade cakes.



It has been good to see a little rain here recently; it has perked up the dahlias and veg! And for once we have a good number of butterflies, hence photo of red admiral (just seeable in the centre), with the restored steps in the background. For more information and news, go to our website: www.eastonlodge.co.uk or find us on Facebook.

Jill Goldsmith



P. D. Tucker & P. Stapleton

Hazel End Road, Hazel End, Bps Stortford, Herts CM23 1HB

Tel: 01279 813429

Mon-Sat: 12noon - 3pm & 6 - 11pm Sunday: 12noon - 3pm

Village Services and Activities

Alzheimer	Marian	07803 115826
Art Studio & Gallery	Heather Brown	01279 815453
Art Studio & Gallery	Brian Gough	01279 815012
Ballroom Dance	Fred Winters	01763 271942
Ballet	Wendy Mitchell	01992 812781
Birchanger Magazine	Peter Sampson	01279 813193
BAGS	Rosemary Wheatley	01279 814678
Birchanger Voices	Tony Wilson	01279 813007
Birchanger Nursery	Karen Reilly	01279 810800
Bird Food	Lesley Robins	01279 812248
Builders - Another Level	Matt Marks	01279 814273
BSSC Club	Kenny Gould	01279 813441
Chiropodist	Julie Golden	01279 873492
Car Service	D. Bonney	01279 813315
Dementia	Debbie Baker	07927 011345
Dance	Maxine Williams	07854 251528
Garden Services	GWB Horticulture	01799 543483
Hairdresser Men/Boys	Emma Marks	01279 814273
Line Dancing	Shelley	01279 864781
Launderette	Ian Kennedy	01279 866183
Nail & Pedicure	Hien's Nails	01279 507019
Neighbourhood Watch	Peter Sampson	01279 813193
Over 60's club	Jean Camp	07843 707249
Painting & Décor	David Debnam	07973 861268
Parish Clerk	Keith Williams	01279 814773
Petals Children's Play	Hana Hainsby	07730 619522
Property Services	Mark Taylor	07941 357934
Public Safety	Peter Sampson	07817 904333
St. Mary's Church	Elaine Wright	01279 813474
Tai Chi	Mary Dann	07771 656063
The Three Horseshoes	Paul & Paula	01279 813429
The Three Willows	Mark Boden	01279 815913
Village Church Hall	Elaine Wright	01279 813474

Village Church Hall



Modern hall, superb kitchen and additional meeting room available for hire



Forthcoming Fundraising Events

Tearoom: Every Wednesday from 2.00pm to 4.00pm

For hall bookings please contact: Elaine Wright 01279 813474.
stmaryschurch.birchanger@gmail.com

St. Mary's Church News



Church Services

1 st Sept	11:15 am	Matins service
8 th Sept	11:15 am	Holy Communion
15 th Sept	11:15 am	Family service
22 nd Sept	11:15 am	Matins
29 th Sept	11:15 am	Harvest Service Communion

Please bring your dry and tinned food items for local food bank

Church News

On the 28th July the summer lunch was relocated again to the church hall due to the wet weather. This didn't dampen (excuse the pun) the festivities instead it enhanced it by bringing us closer together with lots of fabulous food, flowing wine and a good variety of conversations. All those present enjoyed the company and raised a sum of money in aid of St. Mary's church fund. A big thank you to Elizabeth and Pim Godwin, Pam Lee, Rosemary and Sue for making it all happen.

On the 16th August the church hall was host to Prize Bingo! A merry band of players had dabbers in hand and raised a sum of money for the hall and church. Thanks go to Pam, Rosemary and Sue who once again pulled a great evening off.

Without these fund raising activities our church would not be able to survive. Donations we thankfully receive each week do not cover the costs of keeping our beautiful church open. Our insurance is £1400 per year! Therefore fund raising activities are crucial in keeping our beautiful church open. Perhaps you can help?

Would you like to donate to St. Mary's at no extra cost to you? If you shop on line all you have to do is order your online shopping through the charity 'The Giving Machine'. Simply use their website, www.thegivingmachine.co.uk and pick St. Mary's Church Birchanger as your chosen charity, and you can make your on-line purchases. When you register use our unique sign up code 265987. They will donate commission to us! You can buy from most major stores. It's easy, costs you nothing and earns money for our church. If you have any questions please contact Elaine Wright by email below.

Did you know?

Holy Cross day is celebrated On the 14th September. Holy Cross Day has been associated with the dedication of a group of buildings that were built by Emperor Constantine in Jerusalem on the sites of Christ's crucifixion and his tomb. This dedication occurred on September 14, 335. During the excavation, a relic that was believed to be the cross was discovered by Constantine's mother, Helena. From the fourth century on, the Church of Jerusalem claimed to have this relic in their possession and had a feast to celebrate its discovery.

Prayer for September

*O Lord of wisdom, kindle me with a love for true knowledge,
that I may strive, in the moments I have now,
to culture my life. Not by might, not by power, but by thy spirit,
O Lord, may I learn and teach thy children. Amen.*

For more information about St. Mary's Church, please contact Elaine Wright by email: stmaryschurch.birchanger@gmail.com or log on to our Facebook page.

Village Church Hall



For further information and bookings contact;

Elaine Wright on 01279 813474
stmaryschurch.birchanger@gmail.com

THE THREE WILLOWS



Fine dining & good beers. Children and dogs welcome. Bookings: 01279 815913
Monday to Friday: 12 to 3pm & 5 to 11pm
Saturday: 12 to 11pm Sunday: 12 to 6pm

Quality Wild Bird Food

Premium Wild Bird Table Mix
Peanuts
Sunflower Hearts
Niger Seeds
Fat Balls
Suet Pellets
Meal worms
Feeders etc.

Email: villagebirdfood@gmail.com
Tel: 01279812248 Mob: 07752672187
Free Delivery in Birchanger & Stansted

D. Bonney & Sons



**Motor
Engineers**

MOT Testing - Servicing - Diagnostic
Mechanical Repairs
Selection of New and Used Cars

Yew Tree Corner, Manuden
Ring Malc or Niel on
01279 813315 or 01279 815946

State Registered Chiropodist

Mrs. Julie Golden S.R.Ch.

Home Visiting Practice

Est 1994
Tel: 01279 873492
Mob: 07916075451
Dunmow Road
Takeley CM22 6SH

A



The Big Bus for Little People

Now visits
Walson Way,
Forest Hall,
Stansted
CM24 8EU

Wednesday Afternoons

From 1.45 - 3.0pm during term time and at half term breaks. We have lots of pre-school activities on-board Buffy, including regular cooking sessions. Cost £2.50 per child (voluntary donation)

Painting & Decorating

Bring new life to your home



Interior - Exterior
General
Maintenance
No job too small

David Debnam

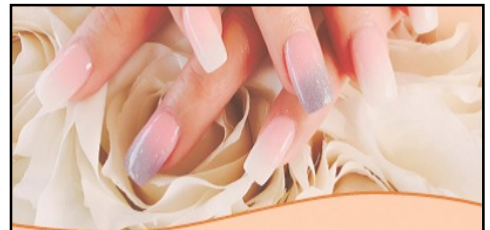
Tel: 01279 815214 Mob: 07973861268



LAUNDERETTE

WE
DO
DUVETS
DIVINELY
AND CLOTHES TOO!

Open 7 days a week
Hockerill lights, Bishop's Stortford
Large car park Tel: 01279 866183



Hien's Nails
Nail & Pedicure Treatment Specialists

New salon now open

12 Church Street, Bishop's Stortford
Hertfordshire CM23 2LY

- Brand new salon ➤
- Luxury pedicure chairs ➤
- Comfortable waiting area ➤

www.HiensNails.co.uk

Walk-in bookings welcome. To book call:

☎ 01279 507019 ☎ 07429 013088

**ADVERTISE
HERE**

**If you are reading this,
so are your
potential customers!
Contact us for details.**



**Friendly, Professional & Reliable
Sustainable Garden Services Provider
Gardening, Landscapes & Tree Works**

Tel: 01799 543483 Mob: 07866 752713

One off Garden Tidies	Regular Garden Maintenance
Hard & Soft Landscaping	Tree Pruning, Felling & Reductions
Hedge Cutting & Trimming	Fencing & Timber Structures
Advice & Planning	Planting and Plant Sourcing
Log Splitter & Operator Hire	Traditional Countryside Crafts
Chipper & Operator Hire	Leaf & Snow Clearance
	Soil, Log & Aggregate Delivery

Free No Obligation Quotes
www.gwbhorticulture.co.uk

The Birchanger Village Magazine is published on behalf of the people of Birchanger and distributed free to 450 households in Birchanger. The views expressed herein do not necessarily reflect those of the editor, the magazine or any organisations or institutions represented. Material sent to the editor will generally be printed as received providing it is considered suitable by the magazine team. The editor reserves the right to edit content if considered unsuitable or where insufficient space is available. All material should be submitted by the 16th of the month to be published the following month.

Editor: Peter Sampson Tel: 01279 813193, Email: magazine@birchanger.com.

Chairman: Elizabeth Godwin.

Treasurer: Ken Wheatley.