



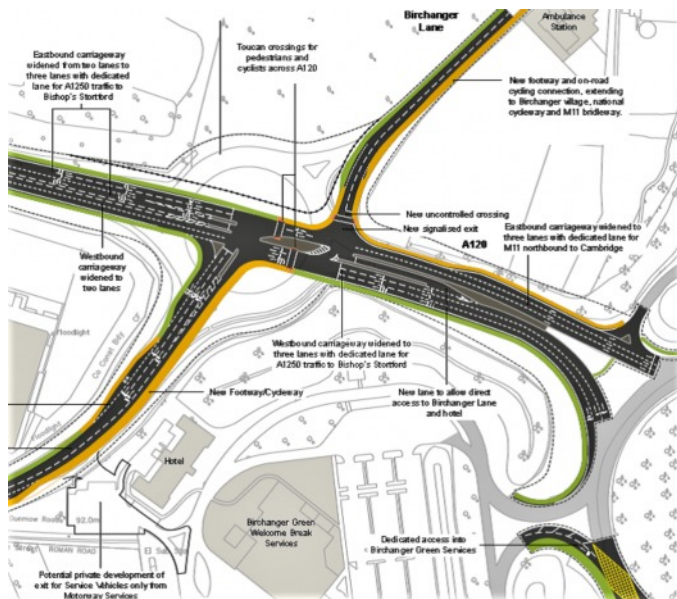
# Birchanger Village Magazine

August 2019

Issue 199



## Junction 8 / A120 Works Delayed



The controversial works replacing the roundabout at the end of Birchanger Lane with a crossroad and traffic lights has been delayed until sometime in 2020. Furthermore, the planned HGV exit from the services onto the A1250 Dunmow Road has been cancelled.

Birchanger Parish Council is concerned about the inevitable additional rat running that will take place whilst the works on the project are being done. Councillor Ray Gooding was asked for an update on the situation which was originally planned to start mid-2019 and what action would be taken about mitigating traffic measures. Cllr. Gooding gave a statement as follows:

"I have been advised that given the nature of the work there will be significant traffic management involved to ensure the free flow of traffic on this busy junction and that will obviously include measures to protect Birchanger Lane from unwarranted use during the various stages of the work. The latest timescale is as follows".

- Aug 2019 Tender documents will be completed
- Jan 2020 Contract will be awarded
- Start ASAP after that.

The website will soon be updated accordingly.

## Locals Raise Over £500 For The Alzheimer's Society

'Cupcake Day' at the village hall in aid of the Alzheimer's Society was a great success according to co-arranger Zoe Welsh.

Held on Sunday 14<sup>th</sup> July at the village hall, Zoe together with fellow organiser Yvonne Gray, raised over £500 for the charity.



Apart from the delicious cupcakes there was also a large selection of scrumptious sliced cake including chocolate, lemon drizzle and Victoria sponge. Tea and coffee was on hand to wash the cake down.

Zoe and Yvonne would like to thank everyone who donated items for the event and to the many villagers that came and supported them. All in all it was a very satisfying day.

## No Art Show in Birchanger This Year

Due to difficulties in procuring art stands for this year's festival, the art show has been cancelled. However, we hope to be back next year. We just need to find a supplier that will rent out stands, or make our own stands for the pictures. Our usual supplier has let us, and several other art shows, down very badly this year by ceasing to rent stands to us on the grounds that they were being damaged! The Birchanger Art Show Group would have told the hirers about any damage that had occurred during the use of their stands. Anyway, watch this space, as we hope to be back in 2020.

*Elizabeth Godwin*



# Editors Letter Box

*Dear Readers,*

It surprises me that in a village as rural and sociable as ours, very few people are willing to step-up and volunteer for small jobs that will help our community. Last month, I noticed several requests for voluntary help or jobs for the village e.g: Treasurer for the church, lollipop lady/man for the school, manager for the village church hall and a part time special constable. Surely someone has a little spare time to help fill these little jobs that are necessary to keep village life sociable, safe and worthwhile to live in. Why is it that the same old people seem to have to fulfil these gaps? The problem is, the 'old' volunteers won't be around much longer, and if the younger generation don't soon step up to the mark and help out, our village will suffer and be the poorer for it.

## Letters to the Editor

*Dear Ed,*

### St. Elizabeth's Charity Raise £8,500

We would like to thank all those people that came and supported us at our annual Summer Fayre. We raised a total of almost £8,500, which is one of the biggest amounts we have raised in a long time, and it couldn't have happened without your help.

We have more events coming up in September, our Apple Day here at the centre on the 28<sup>th</sup> September, and our Golf Day which is at Manor of Groves on the day before (27<sup>th</sup>). We would be delighted if you could come and support these events.

Thanks again for all of your support.  
*Sam Prow ~ Trusts and Events Fundraiser*

St Elizabeth's, Much Hadham, Hertfordshire,  
SG10 6EW

[www.stelizabeths.org.uk](http://www.stelizabeths.org.uk); Registered Charity  
No: 1176777

Positive Living and Learning for People with  
Epilepsy and other Complex Needs

*Editors note! Look out for the adverts covering  
St. Elizabeth's September events in this edition.*



**ST ELIZABETH'S**  
• 1851 INC •

### GET INVOLVED!

There are many different ways  
that you can help St Elizabeth's

- Donate
- Volunteer  
(Individual, Community, and Corporate)
- Shop in our Charity Shops
- Choose us as your Charity
- Take on a Challenge

For more information contact:  
[fundraising@stelizabeths.org.uk](mailto:fundraising@stelizabeths.org.uk)  
Charity No. 1176777

POSITIVE LIVING AND LEARNING FOR PEOPLE WITH EPILEPSY AND  
OTHER COMPLEX NEEDS

Don't forget, your magazine is only as good as the content it receives, so please keep sending me your news, views, notices, concerns and complaints. Advertisers are also welcome. All copy should be submitted by the 16<sup>th</sup> of the month, preferably sooner and may be edited depending on space and content. Please contact me by E-mail, phone, or letter as shown below. Thank you and Kind Regards,

Join us on Facebook: [www.facebook.com/birchanger/](http://www.facebook.com/birchanger/)

*Peter Sampson*



[magazine@birchanger.com](mailto:magazine@birchanger.com)



01279 813193



2 Harrisons, Birchanger



# VILLAGE NEWS

*By Elizabeth Godwin*

## Could You Become a Governor at Birchanger School?

Birchanger School has been a feature in the village since education for all became important in Victorian times. The site of the old school is now a family home in Birchanger today. The School does not just serve residents in Birchanger these days, many of the children come from Stansted and around. It is very important for the school to have at least two members of the governing body from the community which it serves. Sadly existing governors have grown older, have additional commitments or have simply to move on.

This means that the school is looking for new governors from the local community. Anybody interested need not worry about previous experience. Training is given to start with, but it is ongoing throughout any governor's term in office. Governors in the past have found the experience interesting and thought provoking. Nothing in education seems to stand still. Being a governor basically offers new learning opportunities, new people to meet and a lot more. If you would like to discuss everything about being a governor or to find out more, please call me on 01279 812793, or you could call the school on 01279 812362.

## Good News for Essex Libraries

The Leader of Essex County Council, Cllr. David Finch, recently announced that no Essex library will close! However, the devil is in the detail, so don't crack open the bubbly just yet! Earlier this year the Conservatives at Essex County Council announced plans to close 25 libraries in a huge cost-cutting exercise. Another 19 libraries were threatened with closure unless a community group was prepared to keep them open, with little or no support from Essex Library Service. After a recent consultation, more than 21,000 responses, 1,000 letters and over 50 separate petitions protesting against the closures were sent to the council.

Cllr. Finch stated "the consultation had 'galvanized love of libraries' and that the council will now be investing £3 million to transform libraries over the next five years and will work with communities". The future strategy for Essex Libraries was due to be published on July 15<sup>th</sup> and discussed by Committee on July 18<sup>th</sup> with a decision expected to be made by the Cabinet on July 23<sup>rd</sup>. The announcement is very welcome but until the full details are known it still isn't clear to what extent Essex Library Service will be involved in running, staffing and supporting all the libraries.

## Birchanger All Girls Society

The 'BAGS' invite woman of all ages to join them on the last Wednesday of every month in the village church hall.

**Next Meeting: Wednesday 28<sup>th</sup> August.**  
**Bowling at Ace of Lanes Bishop's Stortford,**  
**Meet at the village hall at 07.30pm.**

Telephone for details:  
Olivia: 07568 574703 Rosemary: 01279 814678

## Children's Activities at Saffron Walden Museum

The Museum is inviting primary school children to join their drop-in special sessions on three Wednesdays in August. Each session has a theme as follows.

August 14<sup>th</sup> Peg Insects

August 21<sup>st</sup> Paper Cone Animals

August 28<sup>th</sup> Cardboard Cactus

Sessions are from 10.30 am to 12.30 pm and 1.30 to 3.30 pm.

It is also a good time to visit the museum and to see the discoveries that have been made in our district. You could follow that with the gardens and the nearby play area.

## Horrible Mondays

The feeling starts on Sunday night. 'Must I really go back to work tomorrow'!

Mondays need not always be so bad. We can anticipate this on Friday by tying up loose ends and doing those urgent jobs then rather than leaving them to Monday morning. Difficult meetings are best avoided on Mondays too. It might help to meet a friend during your lunch break on Monday, or if you can spare the time, after work. If all else fails, treat yourself to your favourite special coffee.



## Don't Let Your Bin Get the Yellow Card

It may seem tough, but just one wrong item in a lorry load of recycling materials can mean that the whole load is rejected as contaminated and will eventually end up in landfill. This is costly and is defeating the

object of everything we are trying to achieve in our recycling programme. Bin men are very good at spotting illegal items in a recycling bin. If they spot one, your bin will not be emptied and will receive a yellow card which will tell you what the offending item is. Remove it and your bin will be emptied, but not until the next recycling day. Too many yellow cards could mean that you are black listed and your recycling bin might not be emptied at all.

## Meet the Customers

Saffron Walden Museum requires more reception area volunteers. This is a varied and interesting role for anyone simply looking for volunteering opportunities and also one which would be a valuable addition to a CV. To find out more or to ask about other volunteering opportunities at the museum, call 01799 510333.



**ANOTHER LEVEL**  
**CONSTRUCTION Ltd**  
Don't just build .....create!

- New Build
- Extensions
- Conversions
- Renovations
- Roofing
- Brickwork
- Plastering
- And more



TELEPHONE 01279 814 273 MOBILE 07710 099 284

[info@anotherlevelconstruction.co.uk](mailto:info@anotherlevelconstruction.co.uk)

[www.anotherlevelconstruction.co.uk](http://www.anotherlevelconstruction.co.uk)



### Check Your Garden for Giant Knotweed.

It seems that this nasty weed has invaded Birchanger again. It is not far from the site which was treated a few years ago, near Harrisons, although there is no evidence to link the two separate sites. While the current site is under investigation and treatment by experts, it would be wise to check what this nasty plant looks like.



At present it is growing rapidly. It may be over 6 feet with a reddish stem, medium heart shaped leaves and clusters of small white flowers. It looks pretty, which is why it was imported into the country from the Far

East in Victorian times. However, it is extremely invasive and damaging to roads, paths and property. If you think you have it, please inform the Parish Clerk, Keith Williams on 01279 814773.

### The White Elephant Birchanger Did Not Want

At the time of writing I have just come back from trying to negotiate the infamous cycle path/bridleway which is supposed to be the cycle route from Birchanger to the airport. You would have to be a very brave cyclist to use it at the moment. Nettles obstruct the path and brambles hang dangerously at eye level and weeds are everywhere, all of which reduce visibility up ahead. The path is hazardous to equestrians, cyclists and pedestrians alike.

Essex County Council installed the cycleway against the wishes of the Parish Council and those who live nearby. It was already a dangerous footpath; it is even more so now. Maintenance is the responsibility of Essex County Council, not the Parish Council and it is in urgent need of a makeover, as are most of the footpaths in and around Birchanger which are also the responsibility of Essex County Council. Until this happens, take care using this path. Hopefully sometime soon the track will be cleared and maintained properly.

### Still Excavating at Stansted Airport



Legend has it that somewhere on the Stansted Airport site there is a yet to be discovered large Roman villa. Hopefully not under the runway, it will be hundreds of years before that will be discovered if it is.

Excavations at other sites at the airport are still ongoing, currently at one of the long stay car parks. Items of interest are discovered every week and are labelled and catalogued

to be displayed in the future at Saffron Walden Museum and other venues around the district. Volunteers are needed to help with this work which will be ongoing for the foreseeable future.



### U3A Stansted

Our General Meeting in August is a special event. The Committee is inviting members and visitors to a Tea Party on August 15<sup>th</sup> in St John's Church Hall, Stansted, 1.30 for 2.00 pm. You are welcome to join us for tea, coffee, homemade cakes, a little Fizz if desired, and a friendly chat.

We have many interest groups covering a very wide range of activities and are pleased to report that the new Creative Writing group is now up and running and two new groups are being planned. Book groups are very popular and our two existing Book Groups are pretty full so a third one is being organised. There is presently no floristry group but if you would like to improve your floristry skills a new member who is a local florist has offered to set up a group which would meet monthly. If you are interested in joining either or both of these groups please contact us by phone number or our web address below.

There are a number of visits planned in the next few months. On August 14<sup>th</sup> you could join a coach trip costing £22, to the Beth Chatto Garden near Colchester. At the height of summer the garden is probably at its best. Apart from strolling through the gardens you can seek refreshment in the Tea Room or Gravel Garden Restaurant.

A fantastic day trip to the Brick Lane Music Hall is planned for October 16<sup>th</sup> for a Music Hall lunchtime show. The cost is £55.50 and includes a three course lunch as well as the Music Hall Show. For full details of these events and how to book please see the 'Trips and Holidays' page on the Website; [www.u3asites.org.uk/stansted/](http://www.u3asites.org.uk/stansted/). For general information about U3A, Telephone: 07874 385541  
*Anne White (Ruth) - Stansted U3A*

Bellow: U3a Walking and Nature Appreciation Group's June Walk around Strethall and Littlebury Green.



**Emma Marks**  
Men and Boy's Haircuts

Tel: 01279 814273  
Mob: 07527227943

99 Birchanger Lane,  
Birchanger,  
Herts.  
CM23 5QF

### TAYLOR PROPERTY SERVICES



FENCING  
BOUNDARY HEDGE PLANTING  
EXTERNAL PROPERTY MAINTENANCE  
GUTTERING  
LANDSCAPING  
PATIOS AND DRIVEWAYS  
GARDEN CLEARANCE  
FLINT WALL REPAIRS

[mark.taylor@taylorsvcs.net](mailto:mark.taylor@taylorsvcs.net)  
[taylorpropertysvcs.com](http://taylorpropertysvcs.com)  
07941 357934





## Drivers Targeted With Fake Fine

### What you need to know

Action Fraud has received an increase in reports and intelligence where elderly victims are being targeted by individuals purporting to be police officers or traffic wardens. The victims are being approached whilst parked in a car park and are told by the suspect that they have parked illegally or broken a speed limit and a photo has been taken of their car for 'evidence'.



Victims are advised that they will face a substantial penalty fine unless they pay a smaller upfront fee immediately. Victims, who opt for paying the smaller penalty, will be directed to a parking meter and asked to enter their card and PIN. These parking meters have been tampered with by the suspect in order to retain the card.

Once the victim inserts their card and are asked for their PIN, the victims are shoulder surfed for their PIN by the suspect. Once victims input their PIN, the card is retained by the machine and victims are told by the suspect to seek help from the company who operates the parking meter or their bank.

### What you need to do

- If you are suspicious about the authenticity of the fine, do not pay it until you have verified it with your local council.
- Always shield your PIN from view when using an ATM machine, and never share your PIN with anyone.
- If your bank card is retained by an ATM machine, contact your bank immediately to inform them.

### Security idea! - Smart Doorbell



Watch over your home using a security door cam. See, hear and speak to visitors from anywhere using your mobile phone or tablet. With instant mobile alerts and two-way talk, you can answer the door from your smartphone, tablet and PC. You can buy these from Amazon or eBay etc. NhW recommend Ring.

# Birchanger Summer Fete

## RAFFLE

Face-painting

PONY RIDES

Tombola

HOGROAST & BBQ

Dea Show

Children's Rides

Live music from THE BIG CHEESE

Plus lots more.....

**Saturday 7th September**

**1.00pm**



**St Elizabeth's**

**Apple Day**

**Saturday 28th September 2019**

From 11am—4 pm

Apple Picking - Live Music  
Craft Stalls - Organic Food

St Elizabeth's Centre, Much  
Hadham, SG10 6EW

For more information contact:  
[fundraising@stelizabeths.org.uk](mailto:fundraising@stelizabeths.org.uk)

Charity No. 1176777

POSITIVE LIVING AND LEARNING FOR PEOPLE WITH EPILEPSY AND  
OTHER COMPLEX NEEDS

# What's on in the village...

			August 2019			
Mon	Tue	Wed	Thu	Fri	Sat	Sun
Bin Collections: Bradley Common collected on Fridays. Rest of Birchanger on Thursdays. Garden bin collections marked with #						
Birchanger Parish Council Meetings: Meets on the first Tuesday of each month at 7.30 pm in the church hall - Open to the public.						
Don't Forget Birchanger Summer Fete Saturday 7 <sup>th</sup> September 1.00pm			1 Green Bin Church hall: 10.00 Alzheimer's 12.30 Line dance for beginners 13.45 Line dance 18.00 Apton dance - private lessons	2 Church hall: 9.30 Baby Glows for toddlers  BSSC: Treasure Chest	3 BSSC: 13.00 Meat Draw	4 St Mary's Church: 11.15 am Matins Church Hall: 12.00 Birchanger Litter Pickers Volunteers
5 Church hall: 11.00 Petal Senses 19.30 Adult Ballroom and Latin Dance BSSC: Quiz Night	6 Church hall: 9.40 Ballet for adults 13.00 Petals Baby Yoga 15.45 Ballet for Juniors	7 Church hall: 09.30 Tai Chi 14.00 Tea Room 15.45 Fencing 17.30 Apton Dance Studio 19.00 Apton dance for Beginners	8 Black Bin # Church hall: 10.00 Alzheimer's 12.30 Line dance for beginners 13.45 Line dance 18.00 Apton dance - private lessons	9 Church hall: 9.30 Baby Glows for toddlers BSSC: Bottle Draw	10 BSSC: 13.00 Meat draw 21.00 White Room - LIVE	11 St Mary's Church: 11.15 am Holy Communion
12 Church hall: 11.00 Petal Senses 19.30 Adult Ballroom and Latin BSSC: Quiz Night	13 Church hall: 9.40 Ballet for adults 13.00 Petals Baby Yoga 15.45 Ballet for Juniors.	14 Church hall: 09.30 Tai Chi 1 14.00 Tea Room 15.45 Fencing 17.30 Apton Dance Studio 19.00 Apton dance for Beginners	15 Green Bin Church hall: 10.00 Alzheimer's 12.30 Line dance for beginners 13.45 Line dance 18.00 Apton dance - private lessons	16 Church hall: 9.30 Baby Glows Church Hall: 19.00 Family Prize Bingo BSSC: Treasure Chest	17 BSSC: 13.00 Meat draw	18 St Mary's Church: 11.15 am Family Service BSSC: Afternoon Tea with Tom Carradine
19 Church hall: 11.00 Petal Senses 19.30 Adult Ballroom and Latin Dance BSSC: Quiz Night	20 Church hall: 9.40 Ballet for adults 13.00 Petals Baby Yoga 15.45 Ballet for Juniors	21 Church hall: 09.30 Tai Chi 14.00 Tea Room 15.45 Fencing 17.30 Apton Dance Studio. 19.00 for beginners 19.30 BAGS	22 Black Bin # Church hall: 10.00 Alzheimer's 12.30 Line dance for beginners 13.45 Line dance 18.00 Apton dance - private lessons	23 Church hall: 9.30 Baby Glows for toddlers BSSC: Bottle Draw	24 BSSC: 13.00 Meat draw 21.00 The Trax - LIVE	25 St Mary's Church: 11.15 am Holy Communion
26 Church hall: 11.00 Petal Senses 19.30 Adult Ballroom and Latin Dance BSSC: Quiz Night	27 Church hall: 9.40 Ballet for adults 13.00 Petals Baby Yoga 15.45 Ballet for Juniors	28 Church hall: 09.30 Tai Chi 14.00 Tea Room 15.45 Fencing 17.30 Apton Dance Studio. 19.00 for beginners 19.30 BAGS	29 Green Bin Church Hall: 10.00 Alzheimer's 12.30 Line dance for beginners 13.45 Line dance 18.00 Apton dance - private lessons	30 Church hall: 9.30 Baby Glows for toddlers BSSC: Treasure Chest	31 BSSC: 13.00 Meat draw	





**BIRCHANGER**  
Sports & Social Club

## Sports & Social Club News



Live Entertainment - Great Food - Excellent Bar - Snooker - Darts - Pool - Football - Cricket - Bowls



CAMRA's **GOOD BEER GUIDE**  
2018

45th Anniversary

### Treasure Chest

Try your luck and pick the right key,  
you could win £ thousands!

**Fri. 2<sup>nd</sup> 16<sup>th</sup> 30<sup>th</sup> Aug**



**The Trax** Playing here 24<sup>th</sup> August 9.00pm



*Simply great music for all occasions..*

**White Room**

*Live Music Duo..*



Performing Here on: - **10<sup>th</sup> August at 9.00pm**

For Bookings Tel Dave: 07940 436063

### Sunday August 18<sup>th</sup> Afternoon Tea

With Tom Carradines' Cockney Sing-a-Long



Please book in advance - Limited Spaces  
Adult £12.50 per person - Children £6.00

### Birchanger Summer Fete

**Saturday 7<sup>th</sup> September 1.00pm**

We still have pitches available for Craft and  
Produce stalls.

Please contact Evan for more details

[evanhill@hotmail.co.uk](mailto:evanhill@hotmail.co.uk)

Registration for the Dog Show on the day

### Club Calendar at a Glance

Fri Aug 2 <sup>nd</sup>	Treasure Chest
Sat Aug 10 <sup>th</sup>	White Room - LIVE 9.00pm
Fri Aug 16 <sup>th</sup>	Treasure Chest
Sun Aug 18 <sup>th</sup>	Afternoon Tea with Tom Carradine - LIVE
Fri Aug 30 <sup>th</sup>	Treasure Chest
Sat Aug 24 <sup>th</sup>	The Trax - LIVE 9.00pm

### Weekly Events

Day	Event	When
Mondays	Quiz Night	9.00 pm
Thursdays	Bingo Night	8.30 pm
Fridays	Bottle Draw	Evening
Saturdays	Meat Draw	1.00 pm
Sundays	Roast Dinners	12.00 md
<b>Restaurant open-Lunch:</b> Wednesday, Friday, Saturday, Sunday.		
<b>Restaurant open-Evening:</b> Friday, Saturday.		

Birchanger Sports & Social Club, 229 Birchanger Lane, Birchanger, CM23 5QJ  
Tel: 01279 813441 Email: [club@birchanger.com](mailto:club@birchanger.com) [www.birchangerclub.com](http://www.birchangerclub.com)

## By Elizabeth Godwin

### What's Happening to Our Food?

We often hear people grumble that food does not taste the same as it used to do. 'Our favourite lines of apples have disappeared, and our bread is bland and goes stale quickly', are just two among many complaints about food. Why? Other people have been concerned about the perception that our food may be lacking something and have decided to run some tests. They discovered that today's food is on average down on vital nutrients by a staggering 38% compared to the same items tested 50 years ago. The nutrients tested included protein, calcium and iron. Who is to blame for this? More research needs to be done but the likely suspects include the hybrid breeding of crops, pesticides and over use of the land.

### Will Fostering Affect My Family?

This is one of the most frequently asked questions from those contemplating fostering a child. The answer is that it does, but most foster careers say only in a good way. People with single children are often the most concerned about the effect the addition of other children will have on their only child, but most are very happy with the result. Some families reported the pride their children had in their foster brothers and sisters.

The best thing for those considering fostering is to talk to experienced foster parents, find out about the various options available and in that way be better placed to discover how it would work for their family.

The next meetings in our area are on September 21<sup>st</sup> at Chelmsford County Cricket Club and at Latton Bush in Harlow on September 28<sup>th</sup>. Both meetings are between 11.00 am and 1.00 pm.

### Seen on the Road Between Haverhill and Cambridge

Driving between Haverhill and Cambridge last month we were somewhat shocked to see an official road sign in red warning us that we were on a high casualty route. After a few miles the behaviour of other



road users who had clearly seen the sign a thousand times, showed us only too clearly exactly why it was there. It is a very dangerous road with poor surfacing in places. Talking to other local residents later, they told me just how bad it was. Red signs seem a good idea, but it also seems that their impact on road users may only be temporary.



### Take Control of Your Handbag

Most ladies routinely use a handbag, stuffing as much as they can get into it, just in case they need it one day. Now, with the advent of the manbag, far more men are doing exactly the same.

Tablets and laptops just add to the stress on your back. Is it all really necessary? Take out the contents. Isn't most of the stuff crammed inside the bag there just in case? Most of it has never seen the light of day since it first went into the bag. Clean out your bag regularly. Look at the contents. Do you really need them? Try making do with a smaller bag which has less in it. Eliminate the heavy stuff and say goodbye to the possibility of back ache, poor posture and irritatingly not being able to find your keys when you need them in a hurry!

## Buffy Playbus is Crowdfunding for a 'Sensory Den'

The Buffy Playbus which stops at Walson Way, Forest Hall, Stansted from 1.45 to 3.00 pm during term time and at half term breaks needs your help. They are crowdfunding to raise £5,315.00 for a dedicated sensory area on their new playbus. This will enable all pre-school children, whatever their abilities, to have fun and enjoy themselves in a unique and innovative setting.

Buffy Playbus is delighted to announce that they have been awarded funds from The National Lottery Community Fund and also Uttlesford District Council to buy a replacement bus, which will be launched this summer. Children and their families are at the heart of everything we do on Buffy; therefore we need the help of the Spacehive Community to raise the funds needed for the installation of our Sensory Den.



The space will be dedicated to the sensory needs of all children. We will use lighting, soft materials, inviting colour schemes and interactive play to provide a safe and comforting environment where children can learn and play. This will be a special place where children feel entirely at ease and are able to initiate and control effects of the experiences they create.

### The project has real power to make a big difference

Since 1994, Buffy Playbus has shown that it is very capable of adapting to the needs of vulnerable and isolated families, by providing a well-regarded and welcoming service throughout the district of Uttlesford. During this time we have supported over 90,000 individuals enabling them to learn new skills and make supportive friendships, leading to stronger communities and more resilient families. Over 280 families are registered with our service and regularly visit our play sessions. The new bus provides an amazing opportunity to reach a wider range of families, so that early development can be enhanced and isolated children can be better equipped for their transition into future education.

Donors will be offered a wide range of rewards depending on their level of contribution to the crowdfund, which can include: a free party on the bus, invitation to cut the ribbon at our launch event in September, free entrance for all the family for one month, your name displayed on the new bus interior. Most importantly providing our communities with access to a range of multi-sensory activities.

Please pledge today to support our Big Bus for Little People by logging on to:

<https://www.spacehive.com/buffy-playbus-sensory-den>

To find out more log on to [www.buffybus.com](http://www.buffybus.com) Thank you.



# Family Prize Bingo



**Friday 16<sup>th</sup> August at 7.00 pm in the Church Hall**

By popular request we are hosting another family bingo evening but this time it will be on a Friday. The previous two have been such good fun for all ages.

Children pick up the game very quickly and the adults are so competitive! Come along and join in.

Tickets are £10 per adult and £5 for children.

Included is a ploughman's supper.

Call or message Pam Lee for details on 07702171744



## Aerial Satellite AV Security

- Aerial Installations
- Sky Installations & Subscriptions
- CCTV & Security Alarms
- Freesat Installations & Receivers
- Audio Visual Installations
- Multiroom Music & TV Distribution
- Wireless & Wired Networks
- TV Wall Mounting Services
- Family Run Business



**01279 656 983 - 0800 587 2556**

Unit 1, Suite 1 Peak Business Centre, Woodside Industrial Estate, Bishops Stortford CM23 5RG

### Wireless Security

Intruder alarms



**Intruder alarms have never been so simple to install, operate, maintain and clean.**

**Mediacoms uses the latest technology to keep you & your property secure.**

**YOUR HOME AND COMMERCIAL SECURITY INSTALLER**  
ALARMS CCTV DOOR ENTRY GATE AUTOMATION

[www.mediacomps.co.uk](http://www.mediacomps.co.uk)

[info@mediacomps.co.uk](mailto:info@mediacomps.co.uk)



# STOP STANSTED EXPANSION

## Airport Planning Approval to Be Reviewed

On Friday 28<sup>th</sup> June SSE was successful in persuading a special meeting of Uttlesford District Council (UDC) to refer the 2018 Stansted Airport planning application – which was provisionally approved in November 2018 – back to the Planning Committee for further consideration. The proposal received overwhelming support with 31 councillors voting in favour, only one against and one abstention.



There was loud applause from the packed public gallery in the Council Chamber when the result of the vote was announced. Many of those present had signed the residents' petition calling for the airport planning application to be referred back to the Planning Committee for further consideration.

The petition, which was presented to the Council by SSE Deputy Chairman Brian Ross, had gathered almost 1,700 signatures in just 17 days, making it the biggest ever petition in the history of the Council. SSE argued that there was a compelling case for referring the airport planning application back to the Planning Committee in view of all the outstanding issues.

SSE Chairman Peter Sanders commented: "It was a truly uplifting day for local democracy but this is only a first step. SSE's task now is to provide all the relevant evidence and analysis to the Planning Committee so that it can make the right decision. We will take nothing for granted."

SSE has always argued that the size and complexity of this airport planning application meant that it should have been dealt with nationally rather than by the local council, which is one of the smallest local authorities in the country and has limited resources.

There are many new members on the Planning Committee and it will obviously take time for them to familiarise themselves with an application which comprises some 2,400 documents amounting to around 13,000 pages. This cannot be rushed. *Brian Ross*





## The Hundred Parishes Society

Recent publicity has been encouraging us to spend time outdoors for many health benefits and as an antidote to the stresses of modern life. The wide open, undulating and exceptionally beautiful agricultural landscape which surrounds the towns and villages of the Hundred Parishes provides an ideal starting point to do just this.

Sadly, many people have lost any connection with the land and also with the rich language used to describe its features. Robert Macfarlane's books *Landmarks* and *The Lost Words* are collections of some of these words, a glossary of wonderful descriptive terms, most of which are no longer part of our everyday conversations.

Whilst standing on a vantage point and viewing a landscape spread below, innumerable features can be seen. Words on an Ordnance Survey map reveal the range of human impact: for example, grove, wood, park, plantation, common, green lane, moat, castle and spinney.



Farnham footpath

Willow stub or a pollarded Ash or Elm describe specific trees marking ancient boundaries, while place names such as Ford End in Great Waltham parish, Porridge Hall in Lindsell and Poor Bridge in Clavering intrigue.

I encourage you to set off to explore the countryside of the Hundred Parishes, armed with an appropriate OS Map and ideally with willing companions. See how many fascinating features you can spot. To add to your enchantment of the day, experience the overhead foliage moving in the wind and making a 'suthering' sound! On your travels you may notice a 'socket', the rift in an oak caused by a lightning strike, or some 'frith' growth of thorns or bramble spreading out from a neglected hedge.



Thaxted

If you are not comfortable setting forth without specific guidance, please take advantage of the suggested walks from railway stations that can be

downloaded from [www.hundredparishes.org.uk](http://www.hundredparishes.org.uk). *Tricia Moxey*

## THE FORGOTTEN GARDENS OF EASTON LODGE

The jamming season has started and will now stretch through to September when there may be plums to add to our usual range of gooseberries, currants, raspberries and mulberries. It is a little known fact that squirrels like redcurrants but not blackcurrants so we have worked to thwart them by keeping them out of our fruit cages! By the time of our 'Apple Day', we should have a well-stocked tombola of jams, jellies and chutneys!

For our open day on Sunday 18<sup>th</sup> August we are focusing on our Japanese garden heritage. We have been returning Japanese style features to the Gardens by restoring the rill in the Glade and its bridge and adding a small Japanese garden down by the Tenboudi looking onto the fishing lake.

We are working on further plans to implement over the winter. Robin Whalley, who is an expert on Victorian and Edwardian gardens and has studied and published Peto's travel diaries, is our Conservation & historic advisor and will be at the Gardens to tell visitors more about Peto and his designs.



There will be an exhibition of bonsai trees, a plant stall and fresh produce from our kitchen garden, music from Woodwind of Stortford and free children's activities. Gates open at 11.30 and last entry is at 4.00pm. Entry price £4.50 and free for children. Our volunteers will be serving bacon and cheese rolls and homemade cakes and visitors are welcome to bring their own picnics. For further details, see our website: [www.eastonlodge.co.uk](http://www.eastonlodge.co.uk) *Jill Goldsmith*

## The Three Horseshoes



P. D. Tucker & P. Stapleton

Hazel End Road, Hazel End, Bps Stortford, Herts CM23 1HB

Tel: 01279 813429

Mon-Sat: 12noon - 3pm & 6 - 11pm Sunday: 12noon - 3pm



## Village Services and Activities

Alzheimer	Marian	07803 115826
Art Studio & Gallery	Heather Brown	01279 815453
Art Studio & Gallery	Brian Gough	01279 815012
Ballroom Dance	Fred Winters	01763 271942
Ballet	Wendy Mitchell	01992 812781
Birchanger Magazine	Peter Sampson	01279 813193
BAGS	Rosemary Wheatley	01279 814678
Birchanger Voices	Tony Wilson	01279 813007
Birchanger Nursery	Karen Reilly	01279 810800
Bird Food	Lesley Robins	01279 812248
Builders - Another Level	Matt Marks	01279 814273
BSSC Club	Kenny Gould	01279 813441
Chiropodist	Julie Golden	01279 873492
Car Service	D. Bonney	01279 813315
Dementia	Debbie Baker	07927 011345
Dance	Maxine Williams	07854 251528
Garden Services	GWB Horticulture	01799 543483
Hairdresser Men/Boys	Emma Marks	01279 814273
Line Dancing	Shelley	01279 864781
Laundrette	Ian Kennedy	01279 866183
Nail & Pedicure	Hien's Nails	01279 507019
Neighbourhood Watch	Peter Sampson	01279 813193
Over 60's club	Jean Camp	07843 707249
Painting & Décor	David Debnam	07973 861268
Parish Clerk	Keith Williams	01279 814773
Petals Children's Play	Hana Hainsby	07730 619522
Property Services	Mark Taylor	07941 357934
Public Safety	Peter Sampson	07817 904333
St. Mary's Church	Elaine Wright	01279 813474
Tai Chi	Mary Dann	07771 656063
The Three Horseshoes	Paul & Paula	01279 813429
The Three Willows	Mark Boden	01279 815913
Village Church Hall	Elaine Wright	01279 813474

## Village Church Hall



**Modern hall, superb kitchen and additional meeting room available for hire**



### Forthcoming Fundraising Events

**Tearoom:** Every Wednesday from 2.00pm to 4.00pm

**Family Prize Bingo Friday 16<sup>th</sup> August at 7.00 pm**  
Call or message Pam Lee for details on 07702171744

For hall bookings please contact: Elaine Wright 01279 813474.  
stmaryschurch.birchanger@gmail.com

## St. Mary's Church News



### Church Services

4th August	11:15 am	Matins service
11th August	11:15 am	Holy Communion
18th August	11:15 am	Family Service
25th August	11:15 am	Holy Communion

### Church News

On the 29th June our Curate Helen Flack was ordained at St Peter's Church Halstead. It was a joyous occasion and was attended and supported by many of the congregation.

On the 30th June the congregation of St Mary's Birchanger attended Reverend Helen's first officiated communion service at St Mary's Farnham with a Benefice wide congregation. It was extremely well attended from all the congregations from St Johns Stansted and both St Mary's churches. We send our prayers, blessing and best wishes to Helen as she embarks on the next step of her priestly journey.

On the 7th July the home of Rosemary Saward was open for Bubbles and Berries. For a donation, a glass of bubbly and a bowl of strawberries were presented to you in the grounds of a beautiful garden. The weather was just right and those attending had a splendid time. This was Rosemary's and Sue Warr's idea and it was a good way of enjoying the Sunday. The money raised goes to support our village church.

### Did You Know?

August 6th is known as the Transfiguration of our Lord. This event, reported in the New Testament, is when Jesus is transfigured and becomes a radiant glory upon a mountain. On the mountain, Jesus begins to shine with bright rays of light, then the prophets Moses and Elijah appear next to him and he speaks to them.

August 15th is known as the Assumption Day of the Blessed Virgin Mary. According to the beliefs of the Catholic Church, the Assumption of Mary into heaven is the bodily taking up of the Virgin Mary into heaven at the end of her earthly life.

### Dates For Your Diary

16th August. Prize Bingo starts at 7.00 pm in the church hall. There will be great prizes for all ages. Come along and have some fun. Tickets are on sale now and cost £10 per adult, Children £5. Price includes ploughman's supper. Bring your own drinks. For tickets please contact Pam Lee on 07702171744 or Elaine Wright on 01279 813474.

### A Prayer For August

Dear Lord my prayer is simple,

Let the water and the soil, the air and the fruit of my country and the world be sweet.

Let the homeless find sanctuary not only for their body but also their soul.

Let the ignorant find their way to enlightenment and be content with humility.

Let promises be fulfilled and prayers be answered.

Let compassion become the garment of the people and love become their only way of life. Amen

For more information follow us on face book or email

[stmaryschurch.birchanger@gmail.com](mailto:stmaryschurch.birchanger@gmail.com)

Elaine Wright

## Village Church Hall



For further information and bookings contact;

Elaine Wright on 01279 813474  
stmaryschurch.birchanger@gmail.com

## THE THREE WILLOWS



Fine dining & good beers. Children and dogs welcome. Bookings: 01279 815913  
Monday to Friday: 12 to 3pm & 5 to 11pm  
Saturday: 12 to 11pm Sunday: 12 to 6pm

## Quality Wild Bird Food

Premium Wild Bird Table Mix  
Peanuts  
Sunflower Hearts  
Niger Seeds  
Fat Balls  
Suet Pellets  
Meal worms  
Feeders etc.

Email: villagebirdfood@gmail.com  
Tel: 01279812248 Mob: 07752672187  
Free Delivery in Birchanger & Stansted

## D. Bonney & Sons



**Motor Engineers**

MOT Testing - Servicing - Diagnostic  
Mechanical Repairs  
Selection of New and Used Cars

Yew Tree Corner, Manuden  
Ring Malc or Niel on  
01279 813315 or 01279 815946

## State Registered Chiropodist

Mrs. Julie Golden S.R.Ch.

Home Visiting Practice

Est 1994  
Tel: 01279 873492  
Mob: 07916075451  
Dunmow Road  
Takeley CM22 6SH

A



The Big Bus for Little People

Now visits  
Walson Way,  
Forest Hall,  
Stansted  
CM24 8EU

## Wednesday Afternoons

From 1.45 - 3.0pm during term time and at half term breaks. We have lots of pre-school activities on-board Buffy, including regular cooking sessions. Cost £2.50 per child (voluntary donation)

## Painting & Decorating

Bring new life to your home



Interior - Exterior  
General  
Maintenance  
No job too small

**David Debnam**

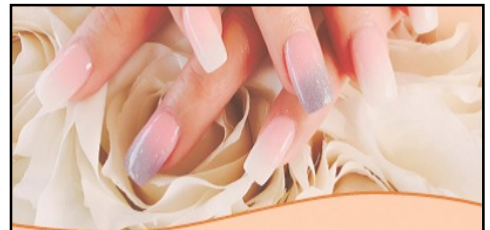
Tel: 01279 815214 Mob: 07973861268



LAUNDERETTE

WE  
DO  
DUVETS  
DIVINELY  
AND CLOTHES TOO!

Open 7 days a week  
Hockerill lights, Bishop's Stortford  
Large car park Tel: 01279 866183



**Hien's Nails**  
Nail & Pedicure Treatment Specialists

## New salon now open

12 Church Street, Bishop's Stortford  
Hertfordshire CM23 2LY

- Brand new salon ➤
- Luxury pedicure chairs ➤
- Comfortable waiting area ➤

[www.HiensNails.co.uk](http://www.HiensNails.co.uk)

Walk-in bookings welcome. To book call:

☎ 01279 507019 ☎ 07429 013088

## Nights ADULT DANCE CLASSES

**Birchanger on Wednesday Nights**

Birchanger Village Hall  
209 Birchanger Lane  
Bishop's Stortford  
Herts. CM23 5QJ  
Starting on Wednesday 10th October  
7.00 - 7.45pm

All classes **£6 pp per night**  
pay on the door



Friendly, Professional & Reliable  
Sustainable Garden Services Provider  
Gardening, Landscapes & Tree Works

Tel: 01799 543483 Mob: 07866 752713

One off Garden Tidies	Regular Garden Maintenance
Hard & Soft Landscaping	Tree Pruning, Felling & Reductions
Hedge Cutting & Trimming	Fencing & Timber Structures
Advice & Planning	Traditional Countryside Crafts
Planting and Plant Sourcing	Leaf & Snow Clearance
Log Splitter & Operator Hire	Soil, Log & Aggregate Delivery
Chipper & Operator Hire	

Free No Obligation Quotes  
[www.gwbhorticulture.co.uk](http://www.gwbhorticulture.co.uk)

The Birchanger Village Magazine is published on behalf of the people of Birchanger and distributed free to 450 households in Birchanger. The views expressed herein do not necessarily reflect those of the editor, the magazine or any organisations or institutions represented. Material sent to the editor will generally be printed as received providing it is considered suitable by the magazine team. The editor reserves the right to edit content if considered unsuitable or where insufficient space is available. All material should be submitted by the 16th of the month to be published the following month.

Editor: Peter Sampson Tel: 01279 813193, Email: [magazine@birchanger.com](mailto:magazine@birchanger.com).

Chairman: Elizabeth Godwin.

Treasurer: Ken Wheatley.