

# Birchanger

April 2012



# Magazine

Issue 112

## FOREST PARK LEAVES BIRCHANGER

Forest Park is no longer in Birchanger following the boundary changes which came into force earlier this month. A large part of the development had actually been in the village, but despite the circulation of the Parish Magazine and invitations to join the club, most of the residents felt that they were part of Stansted not Birchanger. This probably also explains their opposition to any of the Section 106 money being paid to Birchanger, although this is rather hard to understand as the club, school, church and village hall are all used by people from Forest Park, and are all facilities to which they are welcome.

Whatever they feel about Birchanger, we wish them well in their new lives in our area. Birchanger now consists of about 725 adults and is nearly back to the numbers we were used to before any building started.

Birchanger now stretches along the south east side of Forest Hall Rd, up to Parsonage Farm: a more logical boundary for the village in the light of the new development, although many remember the Rochford Nursery Site in its heyday and will mourn the loss of such a large part of the village.

## MORE MEDALS FOR THE KARATE CLUB

### South East Shikon open Kyu grade competition

On Saturday 24<sup>th</sup> March 2012, 12 students of Dean Tilley karate club travelled to Queens hall school green lane North Weald to take part in a Kyu grade competition of Kumate and Kata.

The yellow belts 7 Kyu were first with Jay Neville and William Jackson winning bronze medals in kata. In the orange belts 6 Kyu Regan Williams won a gold medal in Kumata and bronze in kata. Layla Trusty won a bronze in kumate and silver in kata, Anton Trusty won a gold in kata, Elfie Hawkins won a silver in kumate and a bronze in kata. Green belt 5 Kyu Dylan Cornelier won a gold in kumate and gold in kata. Blue belt Lucy Frost won a bronze in kumate. Brown belts 3 Kyu Josie Frost won a bronze in kumate and a bronze in kata. 2 Kyu Ruby Tilley won a bronze in kumate, Isabella Tilley 2 Kyu won silver in kumate, Jordon Martin 2 Kyu won gold in kumate, silver in kata. Sensei Dean Tilley said after he was "proud of all his students" and he had a fantastic day taking 18 medals in all.





# PARISH COUNCIL NEWS

*Elizabeth Godwin*

## Our roads have become more dangerous

We may have suspected this, but the roads in Uttlesford have become very dangerous places in the past year. The number of people killed or very seriously injured in the District has risen dramatically from zero to eight in just one year. This has prompted the police to invest in new speed guns and other speed recording devices as speed was found to be a factor in just about every accident.

New neighbourhood speed recording groups are to be encouraged, and police will spend more time in and around schools in an attempt to bring the figures down. More people will be stopped, spoken to about their speed and manner of driving. Inevitably more prosecutions will follow.

It is speed which increases the gravity of the injuries suffered. It could happen to somebody close to you. Drivers who cause serious accidents suffer the effects of their accidents for years to come.

## New equipment in the recreation ground

The new basketball hoop has finally been installed in the Recreation Ground. Work however will not stop there. Other surfaces have been restored or replaced and the equipment is in the process of being updated or repaired.

However, care is needed when the equipment is used, and parents must supervise younger children on the apparatus at all times. Sadly the area is all too frequently vandalised and glass bottle smashing but by the irresponsible tribes occurs only too frequently, putting young children's safety at risk.

Please take care and respect the area at all times. There are other plans in place to make the recreation ground even more fun for everyone to use. Watch this space for further details.

## What will the demise of the old PCT mean to us?

The old PC surgeries are to be replaced by a new GP led body to be known as a Clinical Commissioning Group, which will now include Harlow within its boundaries. It means that GPs will be in the driving seat commissioning their own services. This will not sit easily with some GPs, who have absolutely no experience with this type of work, and who in some cases are already over burdened as it is.

They will not be allowed to get on with this new workload on their own. Their activities will be over seen by a Health Commissioning Board, who will also deal with the more complex specialist cases. The emphasis is for there to be more care in the community, including the concept of a "hospital at home" which will be co-ordinated by community matrons; something which some of us, who have suffered an appalling lack of aftercare when discharged from hospital in the past, may well be struggling now to accept.

The plain fact is that the gap between health funding and the actual cost is getting wider all the time. There is no prospect of this gap being closed in the foreseeable future, and Uttlesford is looked upon as being the most affluent area in Essex. The fact that many live in rural isolation with inadequate public transport links is totally overlooked. We shall have to fight for everything in this new system as money will be directed elsewhere. It is hoped that the GPs will be up to this job.

With the number of services which will include mental health, post-operative care, the treatment of long term conditions, dementia and end of life management all coming away from hospitals, raises the questions on the amount of space outside the hospital which will be needed for this new approach. It is not just our surgery in Stansted which is short of space. Where will the funding come from to provide the facilities for all this?

The aims are laudable with prevention high on the list, but the benefits of preventative measures will take years to bring noticeable savings. Home care away from hospital will become the norm. There will be treatment management programs, and the “telemonitoring” of patients via a remote link and a team of “super” specialist nurses. The money needed to provide the envisaged end game is simply not there in sufficient quantities. To say this is a challenge is not a comfortable prospect for the ordinary patient, who simply wants healthcare to be available when it is needed.

Despite the changeover coming now, it will take at least four years for the process to be complete. Meanwhile things will go wrong, and if it is going wrong, complain about it. You will help others if you do so in the long run. It could be a painful learning curve for us all in more ways than one.

## We still have a pub in the Village

By the time you read this the Willows Pub will have passed on to new management. There is no doubt about it, Dave and Paul Tucker and all their team have done a wonderful job at the Willows over the past 18 years. They have transformed a failing pub into a hub of good food which is known all over the south east and which features in many good food guides.

That has not been the only benefit. The pub has provided a source of employment to people of all ages who are living in Birchanger. Many have been trained there in the pub trade over the years.

The pub is still here under new management. It cannot exist in these incredibly tough times without your support. Birchanger residents still work there and hope to continue to do so under the new management. When you are deciding to have a meal out, remember it is still very much there. If we don't use it, we will lose it. It is up to you.

We wish the new team all the very best of luck. You have a hard act to follow, but the staff will help if you let them.

## Did you get your new garden waste bin?

Not everyone did it seems! The District Council was under the firm belief that everyone had received their new garden waste bin if they had signed up for one, but they were wrong. Several people never received a bin and that includes me.

Other households who had signed up for a bin had to give it back when the council discovered that their refuse vehicles were too big to reach the property after

the bins had been delivered. They were not too pleased at having to return them, with their money refunded hopefully by now.

Problems all round. If you have yet to receive a bin and you signed up and paid to be included please let me know on 812793. If you have yet to receive a refund for the bin you no longer have, please call the council on 01799 510510

## Veolia keeps rise in water costs low.

Well it is still a rise in costs, but less than the rate of inflation. At this time of year we are all struggling to pay the winter fuel costs, the council tax is in, and the water rates arrive as well. The District Council froze the council tax, but the same could not be said about the other agencies who contribute to the overall bill, namely Essex County Council, Fire Services, and the Police.

If you are experiences difficulties with paying your water bills, Veolia has set up a charity which might be able to help those in difficult circumstances. They can be accessed on line on [www.veoliawatertrust.org.uk](http://www.veoliawatertrust.org.uk)

Meanwhile a hose pipe ban started on April 5<sup>th</sup>. Not a happy prospect for keen gardeners who face an unhappy and strenuous summer when everything must be watered by hand. There are heavy penalties for hosepipe use. But there are exceptions available for those who are registered disabled. To find out if your disability qualifies you for an exemption, go to the email address above.

## Art Exhibition will be back

The Birchanger Art Exhibition brings a great deal of pleasure to many people. Not only does it provide a gallery of high quality pictures by local artists, but has become an event which is looked forward to by people not just from Birchanger. It is a truly social occasion, which brings with it a chance to participate in a photographic competition, admire the flower show while listening to an organ recital on the famous Birchanger Church Organ. There is the opportunity to purchase paintings or cards, and to relax over a cup of tea with homemade cakes.

Various groups participate in the event which helps to raise money for village groups. The Open Gardens core group invites bids from the village charities for the remainder, so the benefits to the village are spread wide.

The date for your diary is the weekend of September 29<sup>th</sup>/30<sup>th</sup>.

## THE LEGENDARY GOLDEN TRIANGLE

I was once again a companion and guide for a blind or partially sighted person this time for a trip to India!

The vibrant capital Delhi, the fabulous former capital of Agra and the Pink city of Jaipur make up India's magnificent golden triangle.

We arrived in Delhi and began the holiday with a tour of both the walled city of old Delhi and New Delhi. We started the day with a visit to Qutb Minar the tallest tower in all India. India gate, a war memorial and the tomb of Humayan, the lotus temple and the Raj Ghat a simple memorial to Mahatma Gandhi.

The previous day had been the anniversary of the day that Gandhi had been assassinated and the tomb was covered in floral tributes, an eternal flame burns at the site. Temporary screens had been erected surrounding the tomb to prevent snipers from taking pot shots at the V I Ps and dignitaries who visited on that anniversary.

The streets of old Delhi were unbelievable, long narrow dirt roads, shops either side, laden with spices, cloth, fruit etc. It seemed like millions of people walking alongside the traffic of tuk tuks, bikes carts mopeds, etc. Large cables and wires were strewn along the sides and across the roads , they hung precariously on poles or unattached to anything.

New Delhi was full of noisy traffic, every vehicle hooting to get out of the way. People begging and people descending on you to sell you anything from postcards to jewelery, people stopping you to shine your shoes, it was not quite daunting trying to walk along guiding a blind companion without getting attention

We left Delhi for Agra to visit one of the seven wonders of the world the Taj Mahal. At sunrise it is said that the Taj Mahal is a beautiful rose pink, by day it changes to a fabulous white marble and by sunset it is a beautiful golden colour

I remember that on the visit to the Taj Mahal there was a huge queue of hundreds of people waiting to go in. I bypassed the queue and was waved in by the security guards. My fellow travellers all followed me. As a seasoned guide I was used to by passing the queue in order to spend time describing to our blind persons.

But it was not because I was blonde, it was not because was with a blind person and it was not because I was a tourist. I found out that we were treated as VIPs as we had paid 280 rupees for our entrance tickets as opposed to a very few rupees paid by the locals.

Judging by the length of the queue they must have queued for hours.

More next Month

Sally Tilstone



## ART CLASSES IN BIRCHANGER

**Friday May 11th - 10am to 4pm** - Bring your own subject and materials –

individual advice and guidance will be given £30 per person

**Saturday May 26st - 10am to 4pm** - Basic watercolour techniques, step by step £35 per person

Birchanger Sports and Social Club

### May Entertainment

5th - Tequila live

19th - Ray Collins

Follow us at [www.birchangerclub.com](http://www.birchangerclub.com)

229 Birchanger Lane 01279 813441

# News from Birchanger Social Club

## World Book Night

World book night is a celebration designed to spread the love of reading and books. On the 23<sup>rd</sup> April 2012 the UK and USA will see tens of thousands of people giving away books within their communities to spread the joy and love of reading. Birchanger is no exception and Ken Wheatley will be distributing **free** copies of Ian Banks book "The Player of Games" in the club on Monday the 23<sup>rd</sup> April. There is a limited amount so get there early as it will be first come first served! Monday evening is also Quiz night so why not join us for a nice evening

## Queens Diamond Jubilee Celebrations

This year, 2012, The Queen celebrates her Diamond Jubilee. Only one other British Monarch in history, Queen Victoria, has reigned for 60 years or more. It is a very rare and special occasion for the British nation and the Commonwealth. Birchanger Sports & Social Club will be hosting 'street party' style celebrations on the Club's grounds on the **4<sup>th</sup> June 2012** to mark this famous event. The function will be open to all local people whether club members or not. Arrangements and entertainment include a hog roast, live music, sports events, games and children's entertainment such as; bouncy castle, teddy bears picnic, face painting and flag waving. Great

food, specialist beers and soft drinks will be available throughout the day and in the evening the club will be entertained by the popular 4 piece group "The Tracks". Don't forget to put it in your calendar! Further details to follow soon

## Hypnoman held the club spellbound!

By popular demand we saw the return of Hypnoman Martyn Williams to the club on the 25<sup>th</sup> February and what a show it turned out to be! A full house saw ten volunteers walk on to the stage, these were whittled down to three men and a woman - who happened to be our intrepid entertainments manager Clare Monk (she must be a glutton for punishment as this was her second appearance with the Hypnoman). Martyn worked his incredible magic and had them all under his spell within minutes and kept control of his subjects over the next two hours. A rendering of the village people and YMCA by the subjects had the audience in stitches. Two out of the four slept in happy oblivion throughout most of the show and missed out on all the fun so were quite sober at the end of the night. Sorry guys but no refunds possible! All in all it was an extremely funny and interesting show. Martyn Williams has a PhD in clinical hypnosis and is a 4<sup>th</sup> Dan grade in Karate; luckily he didn't need to use his martial arts on this night! Martyn has been entertaining audiences from the age of 14 and is sponsored by the veteran singer Kenny Lynch.

# School News

## Do you know how to make a Willow cave?

Birchanger School's Year 5 do. They made one under the instructions from the Wild Life Trust in the school garden. The tent is a living and hopefully growing tree which will thicken to provide shelter in the months and years to come. It is a wonderful place to hide and to have a secret den. You can see how they did it on the walls of the hall in the school.

## Help Wanted!

Birchanger School PTA are to stage the 5km and 10km run again on Sunday May 13<sup>th</sup> at 10am. last year the first ever run was voted a big success by all the

athletes, many with major successes to their names, who took part. Taking this into account and the fact that the Olympics are coming, interest in the event is already growing. All athletes can be accommodated, but last year more marshals to control the route were badly needed.

So if you are not going to run, but would like to support the event, please could you consider being a marshal for the morning? It would involve standing at a point along the route and making sure that the athletes stay on the right track. Last year the weather was fine and it was a lovely way to spend a Spring Sunday morning and help to raise money for the school.

If you would like to offer your help, please call me on 812793.



## Birchanger says farewell to one of its oldest residents.



It is not often that we honour the memory of someone who has lived in Birchanger for all her life until her death on March 24th aged ninety three.

Violet Ferbrache was born at one of the Willows Cottages on 4th March 1919. She attended the village school leaving at 14.

She moved to the other end of Birchanger Lane, finally coming to live in the centre of Birchanger.

She married a Guernsey man Bill Ferbrache and visited the island frequently. Bill and their son Colin were both members of the Bowls club.

She always worked either in Bishops Stortford or in Birchanger village, including the club.

She was very well respected and although she knew many people, Violet had two special close friends, Mary Sage and Joy Wright. Violet and Mary enjoyed a glass of Guinness and Joy would have a sherry. Violet also liked to play bingo at St John's hall in Bishop's Stortford, the Mecca in Harlow or in Birchanger Social Club where she spent years organising the Saturday Meat draws.

Violet was very much part of this community and her life story is very much interwoven with that of other who grew up here and made village life a rich tapestry.

Farewell Vi, probably our oldest lifelong Birchanger resident. We shall miss you.

### Local Councillor Contact details

Maria Davy (Chair)	211 Birchanger Lane	01279-816490
Julia Peachey (Clerk to Parish Council)	11 Ascot Close Bishops Stortford	01279 503912
Elizabeth Godwin District Councillor	330 Birchanger Lane	01279-812793
Ray Gooding County Councillor	260 Birchanger Lane	01279-813103
Angie Driscoll	281 Birchanger Lane	01279-817376
Alex Stuart	279 Birchanger Lane	01279-812303
Linda Pocklington		01279-812246
Ken Wheatley	69 Birchanger Lane	01279-814678
Mark Crossley	5 Duck End	M-07590379399

There will not be a contested election in Birchanger this year

#### COFFEE MORNING



In aid of Church funds

Tuesday 15th May  
10.30 till Noon

Moorswood 330 Birchanger Lane

Everyone welcome



## Eileen Vipond

We were saddened to hear of the passing of Mrs Eileen Vipond widow of Wally the former club chairman. Eileen died on Good Friday during the morning in hospital in Kings Lynn after a long series of illnesses. Eileen and Wally were the only occupants of their house in Birchanger Lane having moved here during the early sixties. She was a keen gardener and made many cakes for sale at the coffee mornings supporting the church she was also a knitter making blankets and kneelers for St Mary's. The funeral will be at Loughborough. She was 78 years old.

# Annual Parish Meeting

The Annual Village Meeting, held as a way for the Parish Council to meet their electors, was held on Wednesday 28th March. Turnout was, perhaps, lower than usual, although the wrong date appearing in Birchanger Village Magazine did not help, despite the correct date being listed on [www.birchanger.com](http://www.birchanger.com).

The guest at this year's meeting was Matthew Bradley, Principal Strategic Development Engineer from Essex County Council, who was here to talk about highway improvements that may be possible with the money paid by the developers of the Forest Hall Road estates. Builders often have to pay for local works to mitigate the effects of their developments as a condition of their planning application, a process referred to as Section 106.

He explained that much of the money would be spent in Stansted on works in relation to the relocation of St. Mary's School to accommodate the new dwellings and the need to improve walking routes to the new school.

In Birchanger, several things were proposed, all with the general aim of reducing the volume and speed of traffic generated by the new developments. The first of these was solar-powered vehicle activated signs warning drivers that they may be speeding. There are likely to be more posts than signs, allowing us to move the signs from time to time, albeit at a cost.

Another speed-reduction measure suggested is the provision of gateways at each end of the village. These do not in any way restrict the physical speed of

vehicles, but have the psychological effect of marking the boundaries of the village. Mr. Bradley did warn us that it is proving difficult to find suitable sites for the gateways due to the narrow verges in the village.

A more controversial plan surrounds Tot Lane. It has been suggested in the past that this be made one-way. That may still be possible, but under discussion now is the complete closure of Tot Lane, which carried 150 vehicles when the Council conducted a census on 29th February, to vehicular traffic. This is popular with some residents, but others point out that it makes access from the village to Mountfitchet College more difficult. In any case an objection from landowners using Tot Lane for access to their property would make closure impossible.

Less controversial, and long overdue, are plans to improve the junction of Birchanger Lane and the B1383, including making it easier to cross to the bus stop.

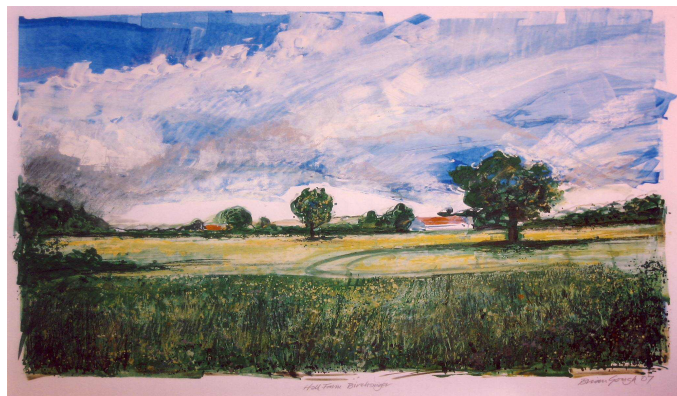
Finally, Highways are considering imposing a 40mph speed limit in Forest Hall Road, between Pesterford Bridge and the new houses.

Mr. Bradley then conducted a Q&A session, answering so far as he was able several questions from the floor. One thing he said that may have an impact on when the works take place is that Highways part of Essex County council has just been outsourced, from April, to 'Essex Highways' - actually a firm called Ringway Jacobs - so things may need to settle down a little.

## Art Exhibition

At Thaxted Guildhall

May 5th, 6th, 7th



Original Art works by  
Brian Gough

*Paul Davall*  
*Carpentry & Joinery*

Traditional time served carpenter and Joiner

All Carpentry and Joinery  
Traditional box and casement sash windows  
Door Fitting Service  
Kitchen cabinet fitting service  
Fitted wardrobes and cabinets



11 Rainsford Road  
Stansted Essex CM24 8DU  
01279 814058 Mob 07962 963987  
[pauldavall@btinternet.com](mailto:pauldavall@btinternet.com)

**Painter and Decorator**

**Roe Smith**

9 Churchfields, Stansted  
Essex CM24, 8RJ



Tel 01279 816459  
Mob: 07798 936627

**Village Diary**  
**April/May**

April

18th Birchanger Village  
Digital TV Switch over  
21st 8.00 pm At the Club  
Cockney Mix  
22nd 11.00 am St Mary's  
Holy Communion  
Followed by Easter Lunch  
29th 11.00 am St Mary's  
Matins

May

5th 8.00 pm At the Club  
Tequila  
6th 11.00 am St Mary's  
Matins  
13th 11.00 am St Mary's  
Holy Communion  
15th 10.30 Moorswood  
Spring Coffee Morning  
19th 8.00 pm At The Club  
Ray Collins  
20th 11.00 am St Mary's  
Family Service  
27th 11.00 am St Mary's  
Holy Communion

**D Bonney & Sons**



Motor Engineers

MOT TESTING, SERVICING  
DIAGNOSTIC, MECHANICAL REPAIRS

SELECTION OF NEW AND USED CARS

Yew tree corner Manuden  
Ring Malc or Neil on  
01279 813315 or 815946



LAUNDERETTE

DO

DO

DUVETS

DIVINELY

AND CLOTHES TOO!

- \* Open 7 days a week
- \* By Hockerill lights, Bishop's Stortford
- \* large car park Tel 866183



**State Registered Chiropodist**

Home Visiting Practice

Mrs. Julie Golden S.R.Ch.

Est. 1994

01279 817810

Stansted Mountfitchet

A professional service at a competitive rate



Friendly, Professional & Reliable  
Sustainable Garden Services Provider  
Gardening, Landscapes & Tree Works

T. 01799 550032 M. 07866 752713

One off Garden Tidies Regular Garden Maintenance  
Hard & Soft Landscaping Tree Pruning, Felling  
Hedge Cutting & Trimming & Reductions  
Advice & Planning Fencing & Timber Structures  
Planting and Plant Sourcing Traditional Countryside Crafts  
Log Splitter & Operator Hire Leaf & Snow Clearance  
Chipper & Operator Hire Soil, Log & Aggregate Delivery

Free No Obligation Quotes  
[www.gwbhorticulture.co.uk](http://www.gwbhorticulture.co.uk)

**ALL BUILDING AND LANDSCAPING  
WORK UNDERTAKEN**

**FENCING, PAVING, DECKING, DRIVEWAYS, DRAINAGE,  
BRICKWORK, EXTENSIONS AND CONSERVATORIES**

For a local service call Sean on  
07703 115079 or 01279 813818



Qualified and experienced freelance hair stylist  
offering a full range of services at reasonable prices

To book an appointment please telephone  
:- 07840 995848 or 01279 814037

[www.beautifulhair4weddings.co.uk](http://www.beautifulhair4weddings.co.uk)

**For Sale**

**White Panasonic Combination  
Microwave Oven and Grill**

£40 ono

In good general condition  
Except the interior light does not work

01279816171

Published on behalf of the people of Birchanger, and distributed free to each household in Birchanger. The views expressed herein do not automatically reflect those of the Editor or any of the organisations or institutions represented. Editorial team: Eddie Gilbey (816171), [eddie.gilbey@btinternet.com](mailto:eddie.gilbey@btinternet.com) Elizabeth Godwin, Ken Wheatley. Submissions are welcome but may be edited depending on available space.